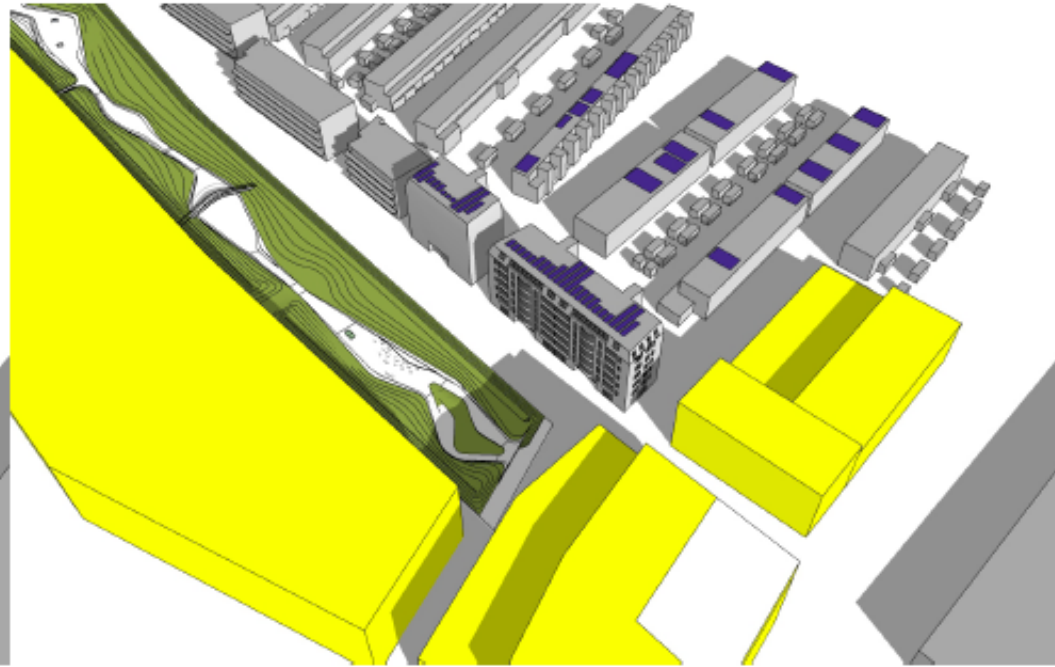
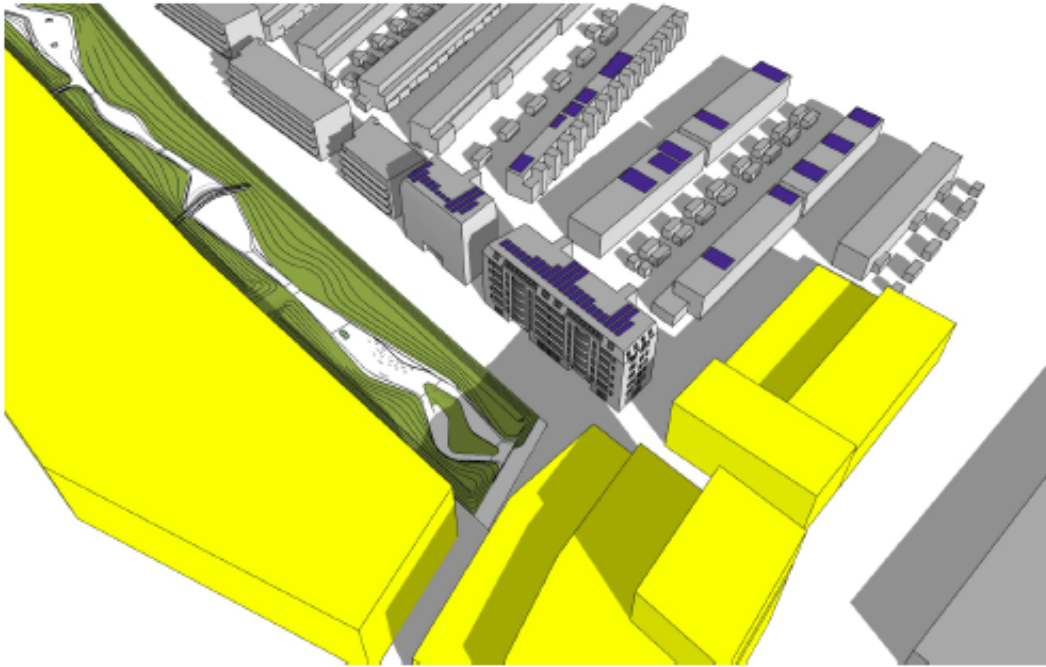
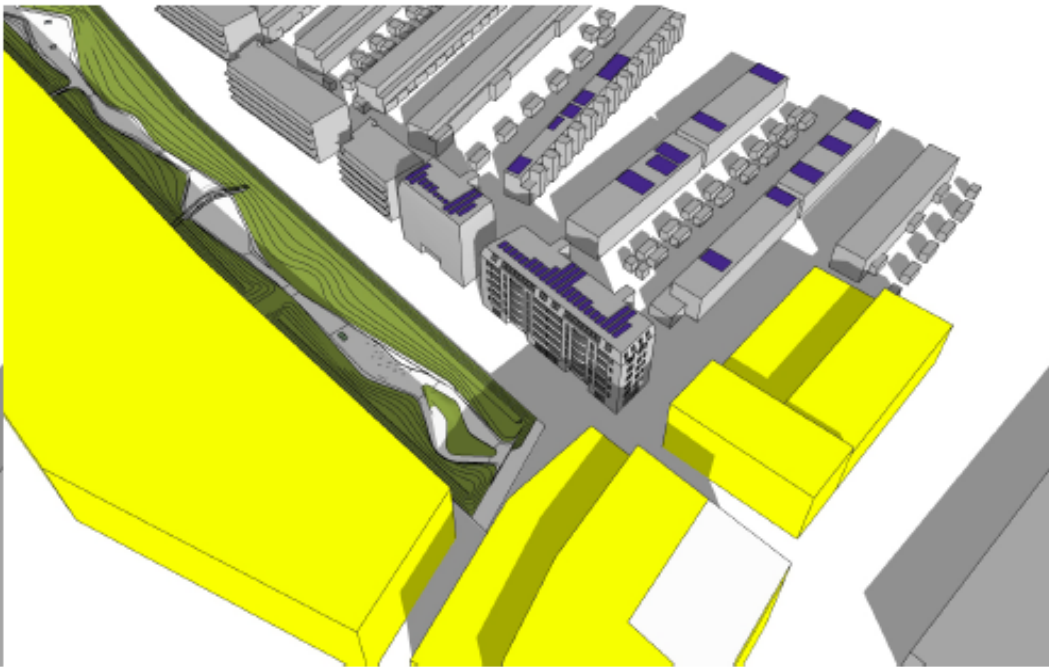
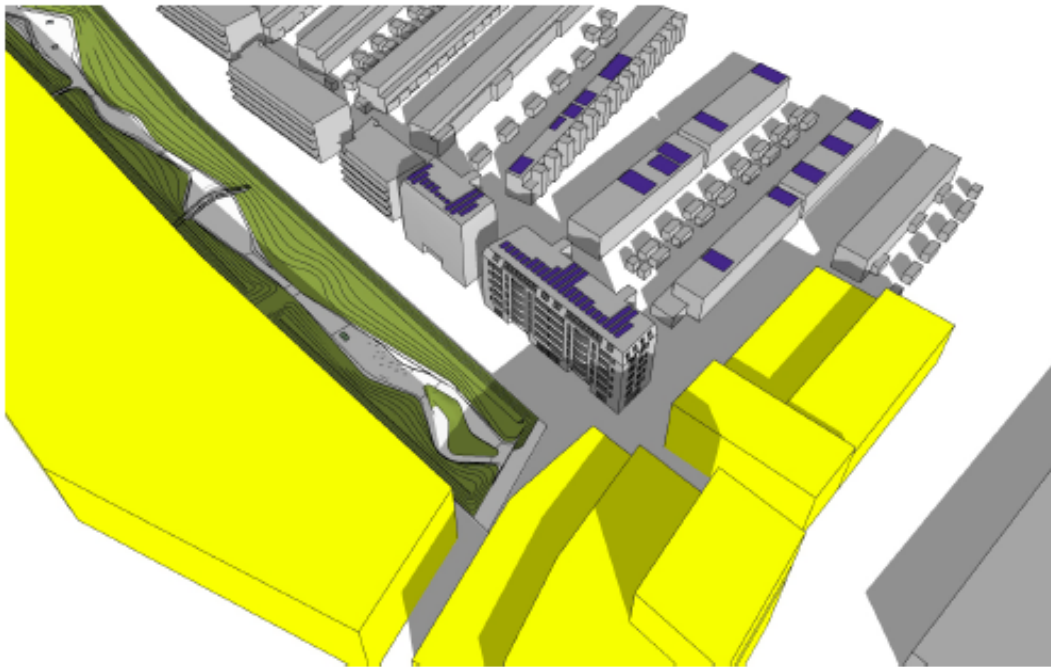


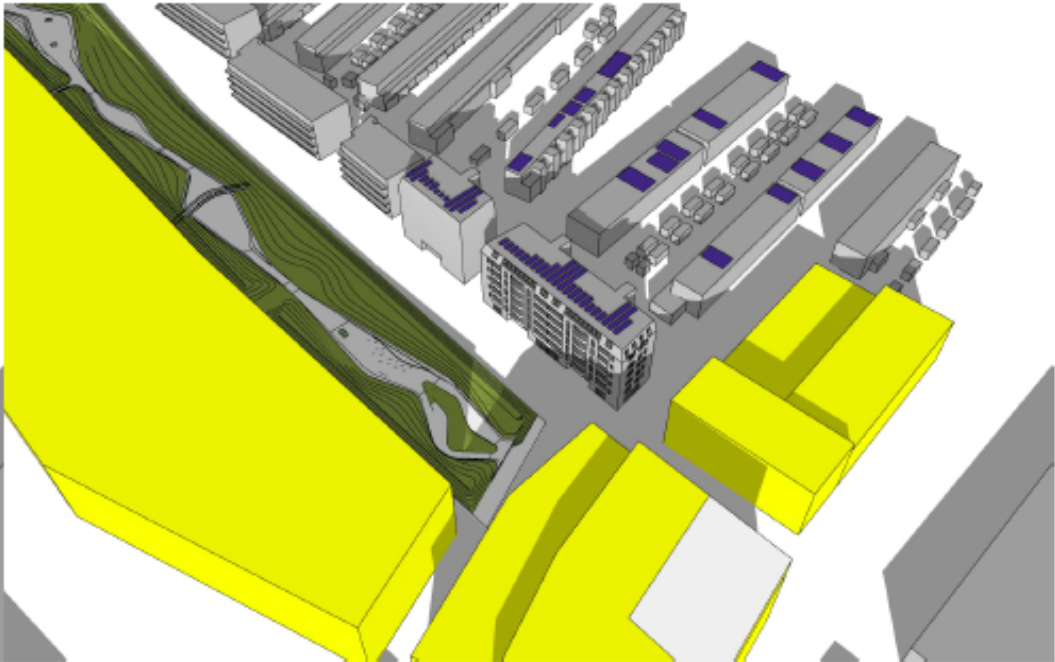
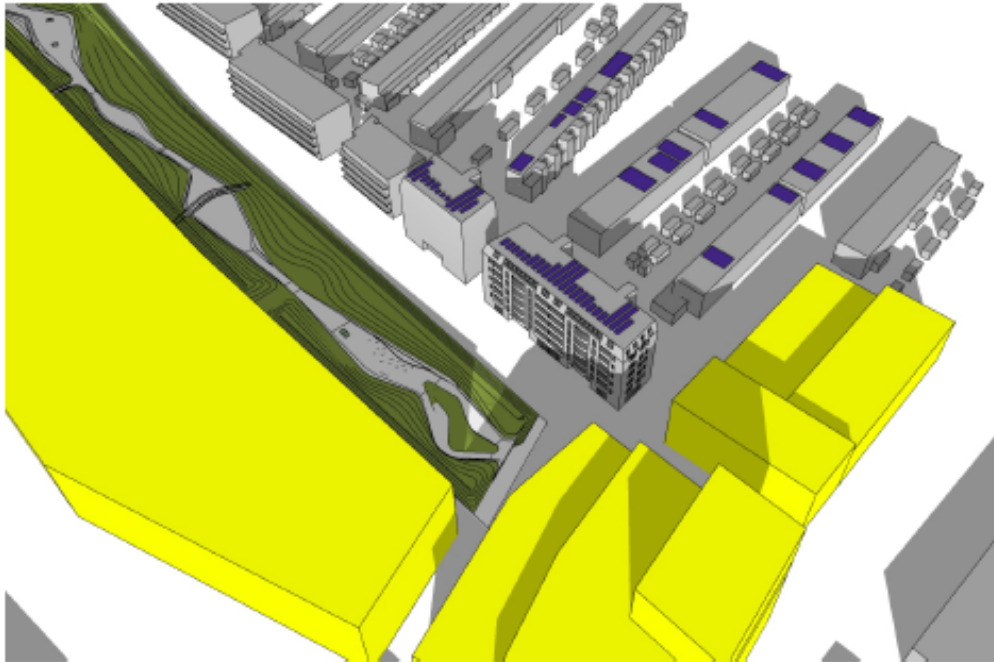
Bijlage – situatie met hoogteaccent (links) en zonder hoogteaccent (rechts)



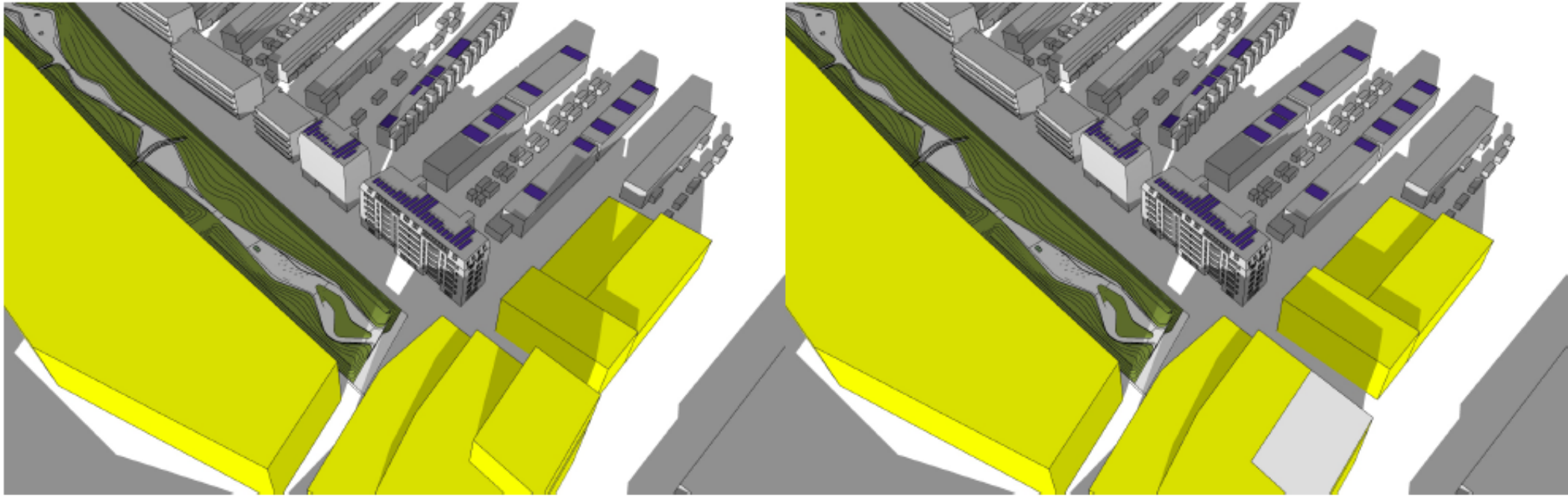
19 feb 13:00 uur



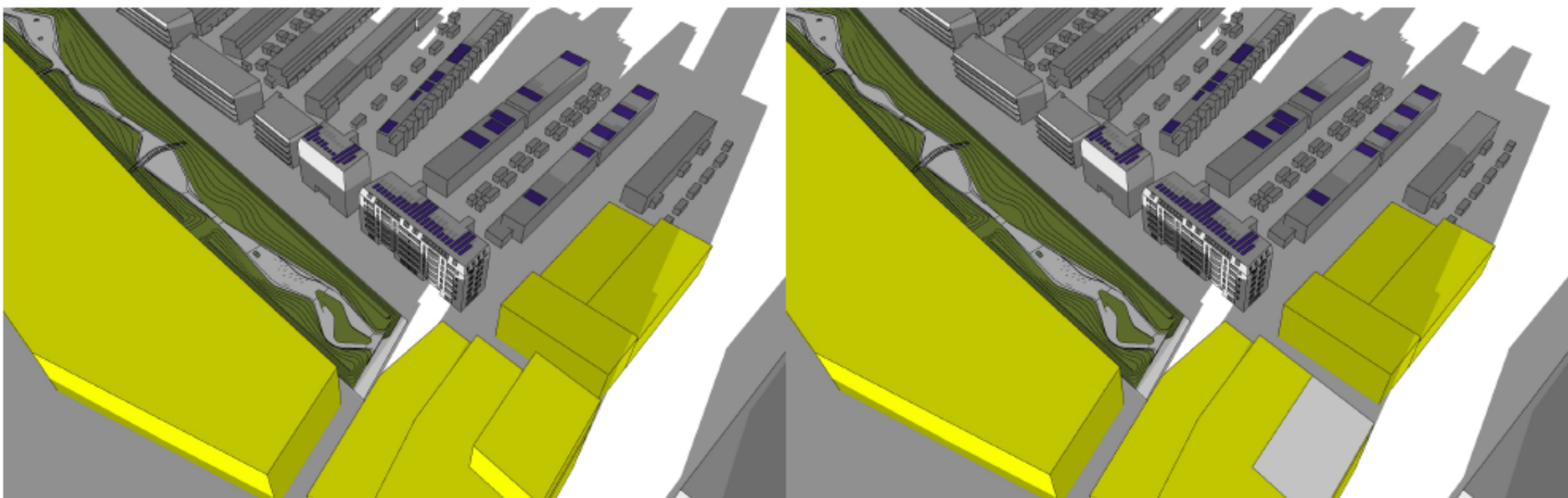
19 februari 14:00 uur



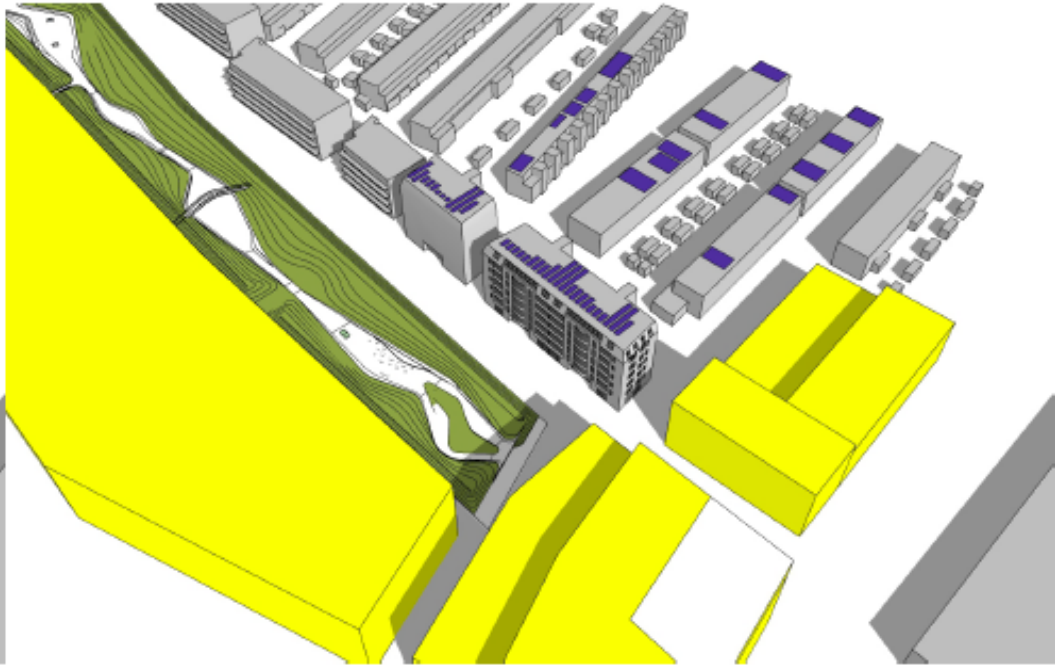
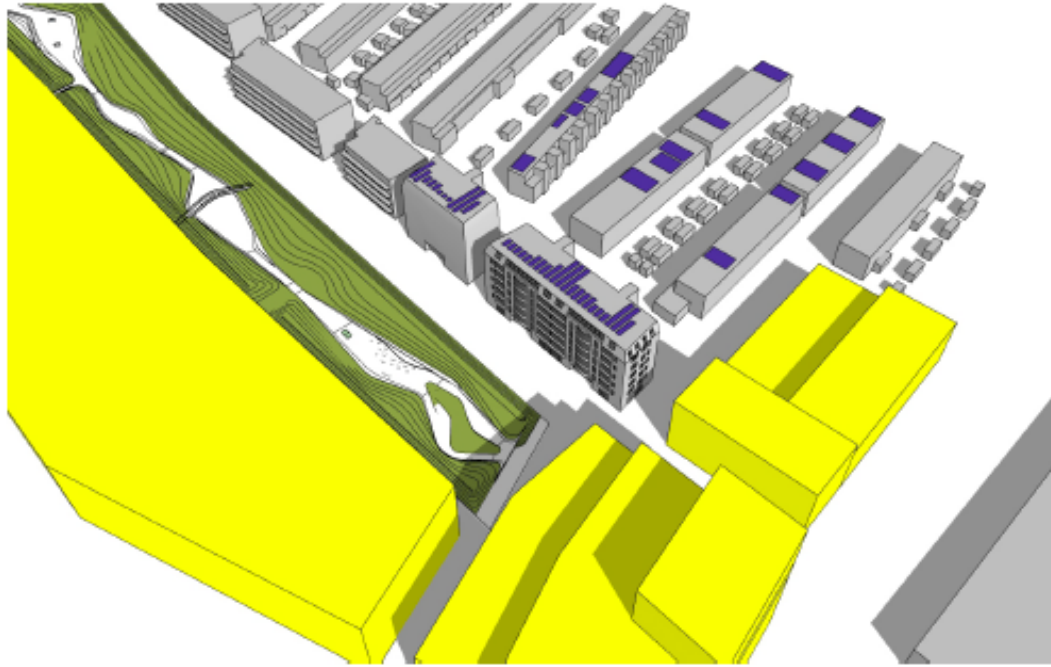
19 februari 15:00 uur



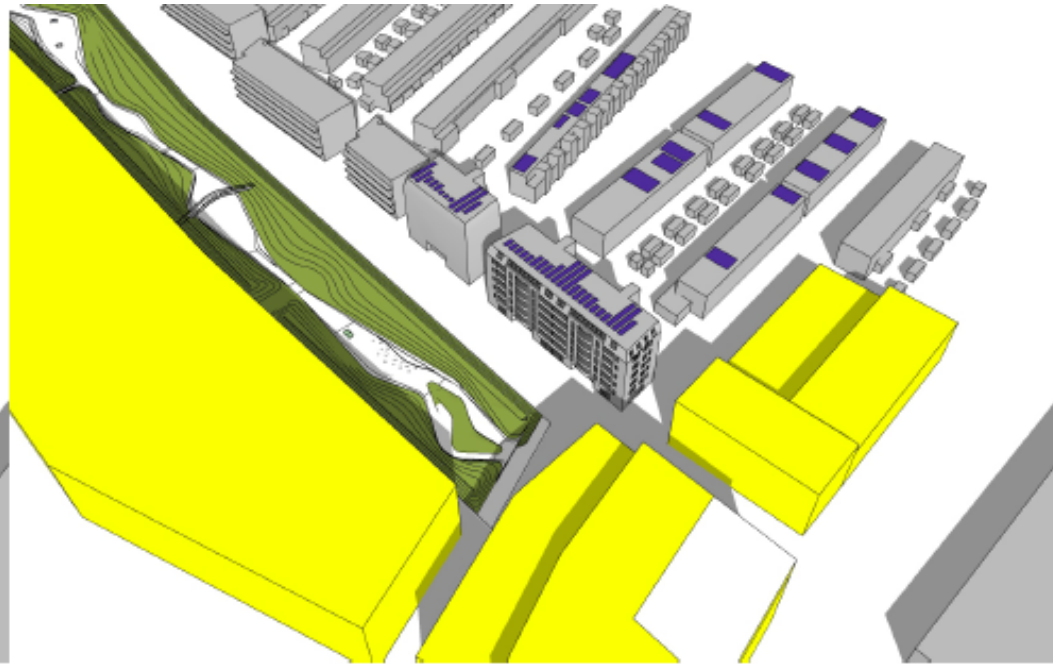
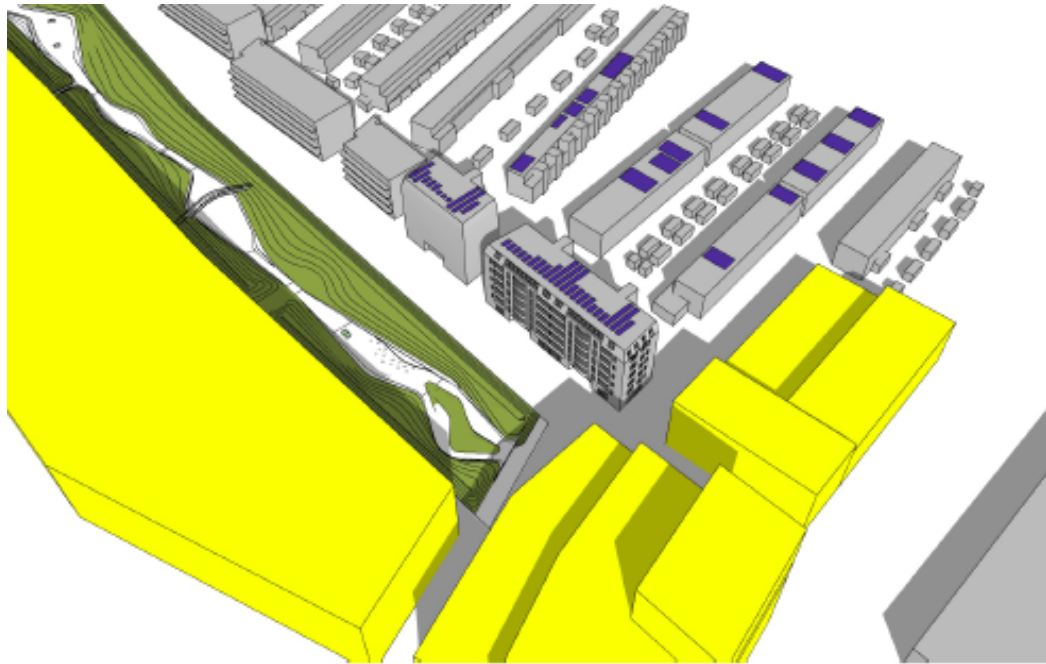
19 februari 16:00 uur



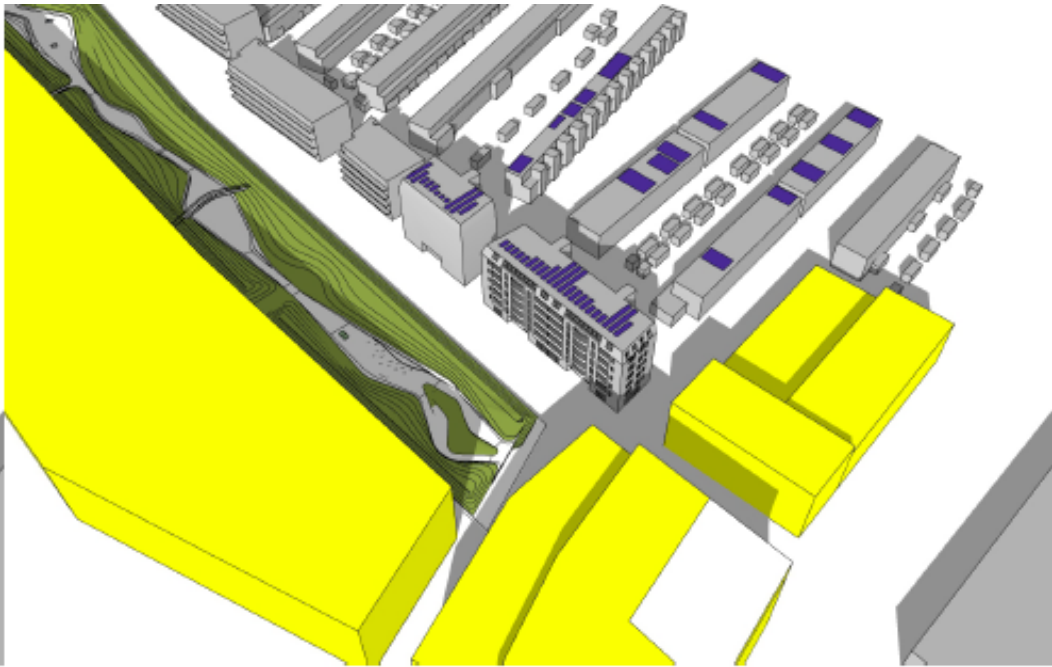
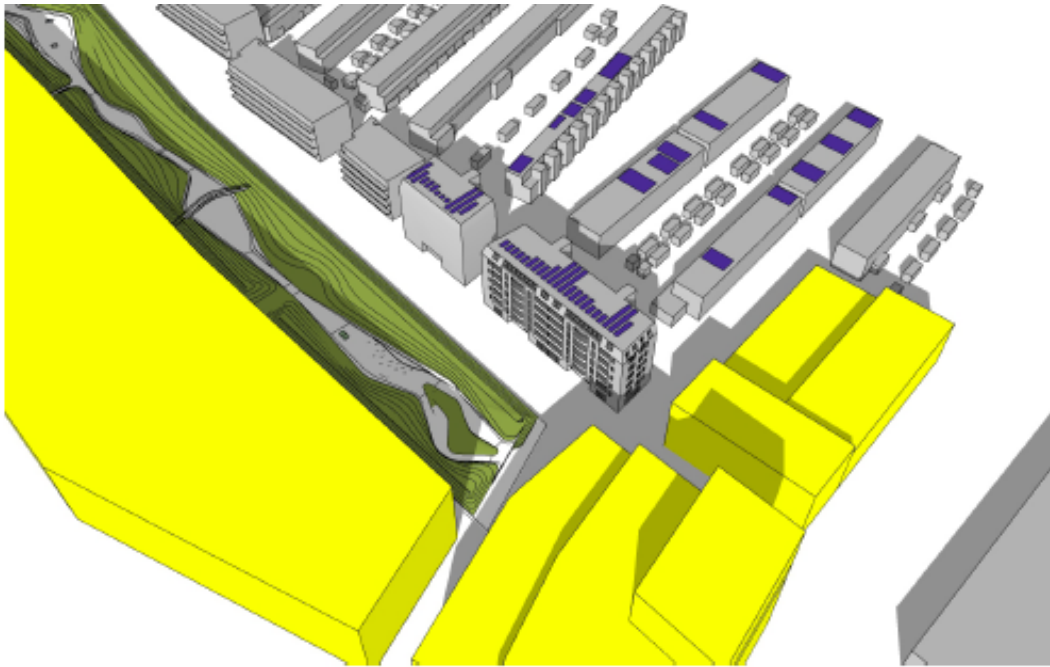
19 februari 17:00 uur



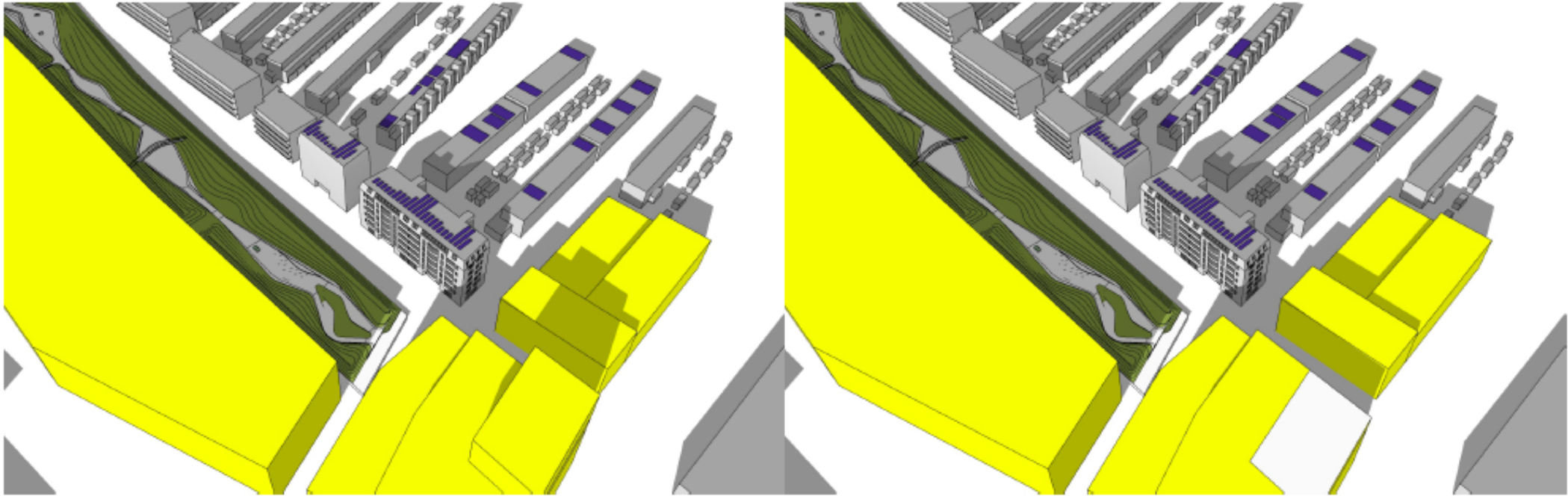
21 maart 13:00 uur



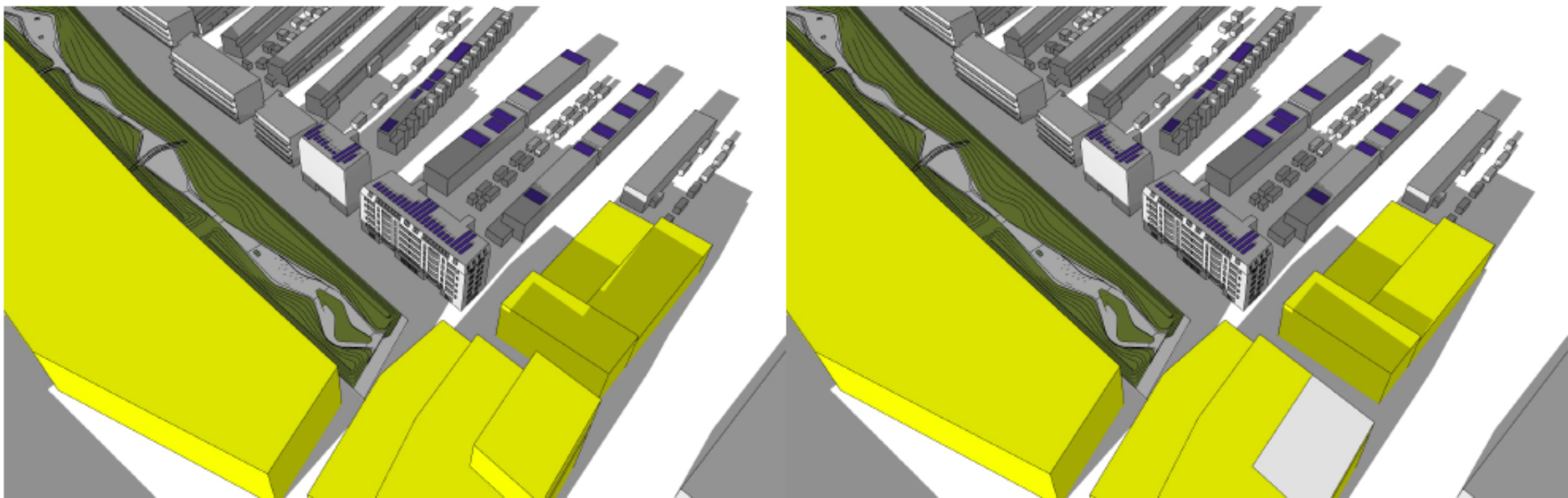
21 maart 14:00 uur



21 maart 15:00 uur



21 maart 16:00 uur

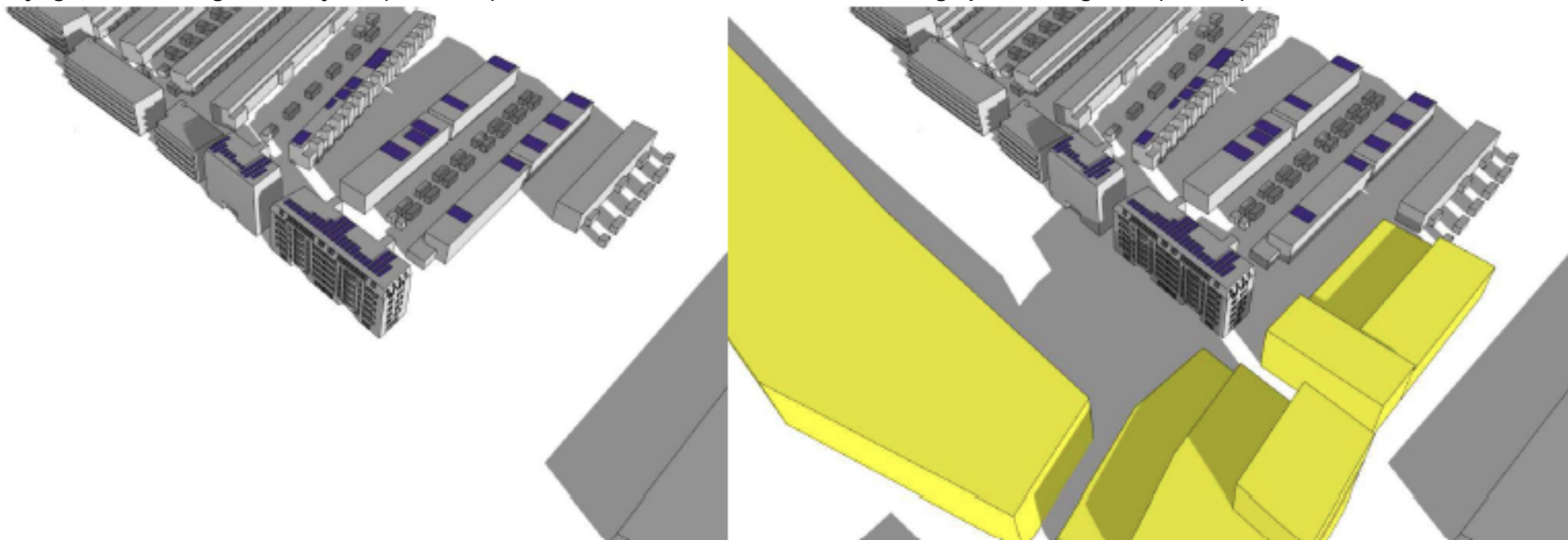


21 maart 17:00 uur

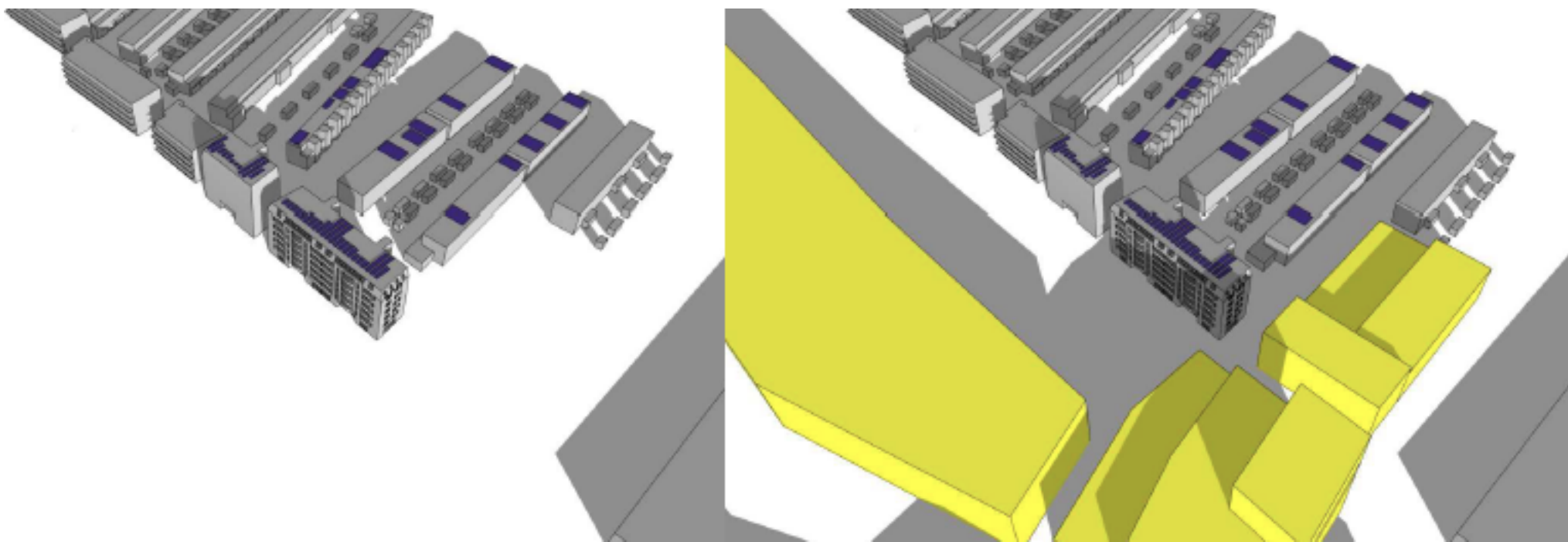
Bijlage 3 – schaduwwerking bij 22 m hoogte op veld 7 (19 februari 16:00 uur)



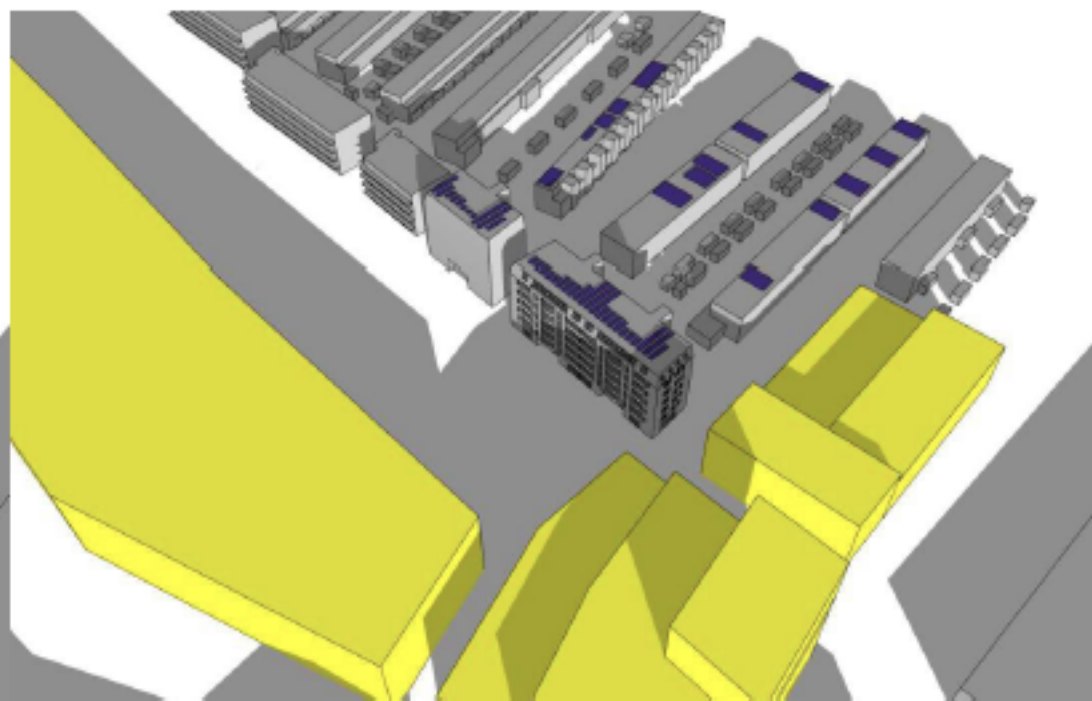
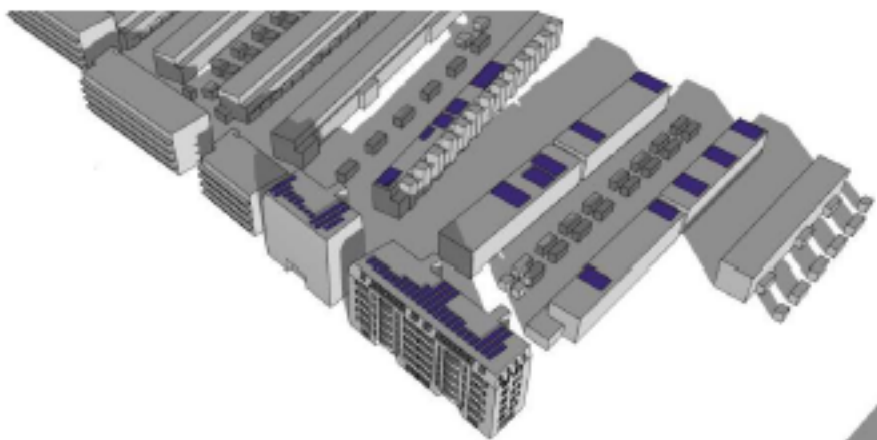
Bijlage 4: bezonning Drukkerijlaan (Delftzicht) zonder nieuwbouw en zonder bebouwing op de Haringkavel (veld 11)



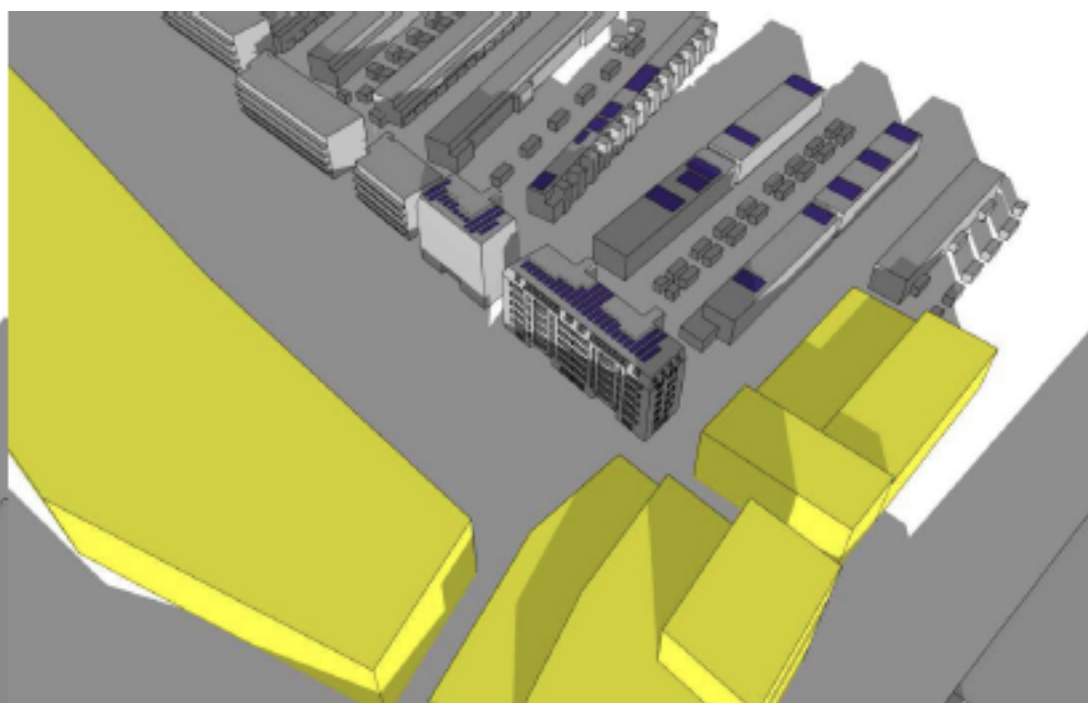
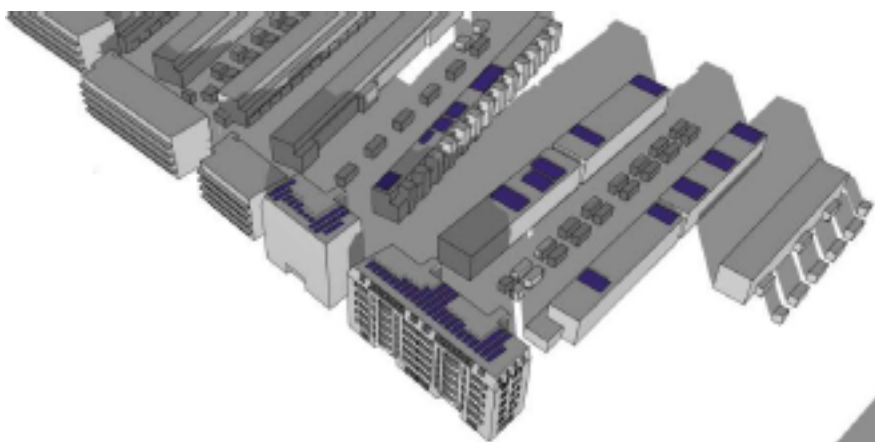
19 januari 13:00 uur



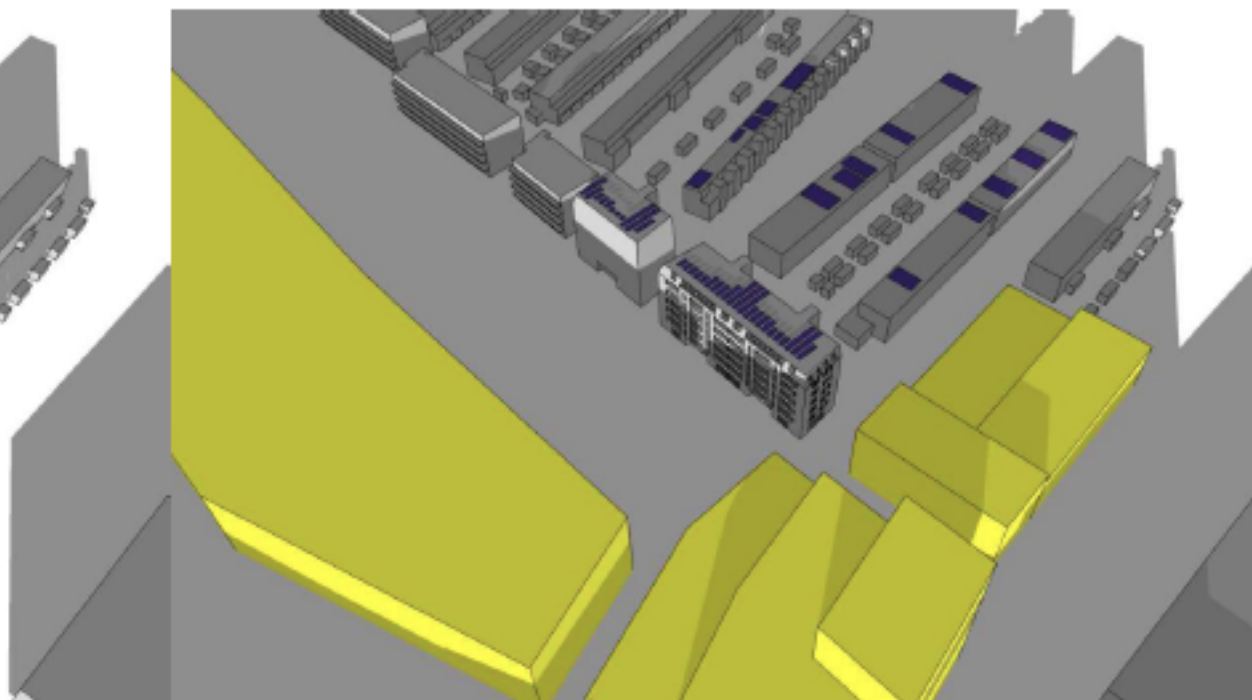
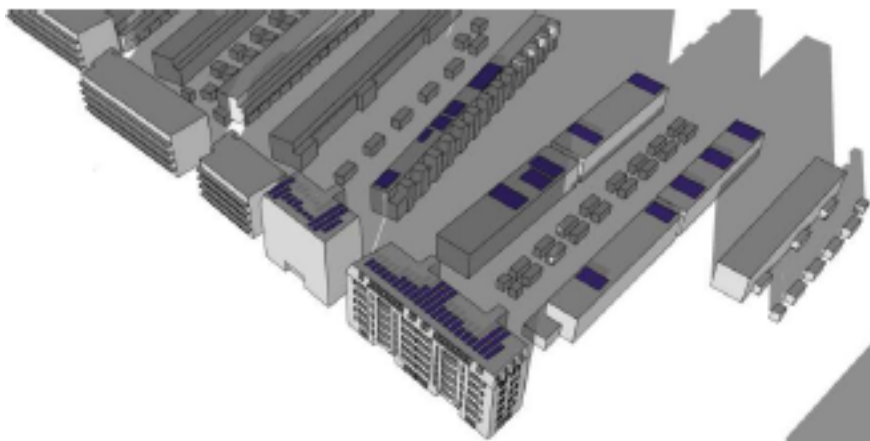
19 januari, 13:47 uur, begin schaduw op zijgevel hoekwoning naast woning indiener (zienswijze 36)



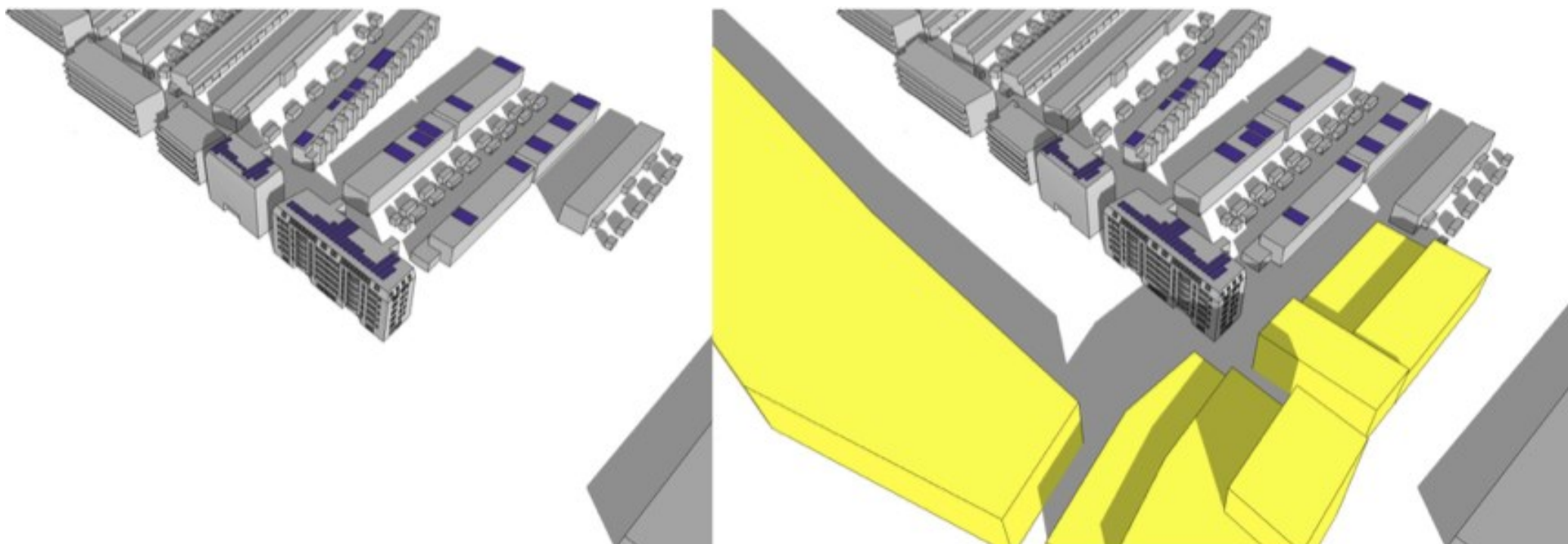
19 januari 14:00 uur



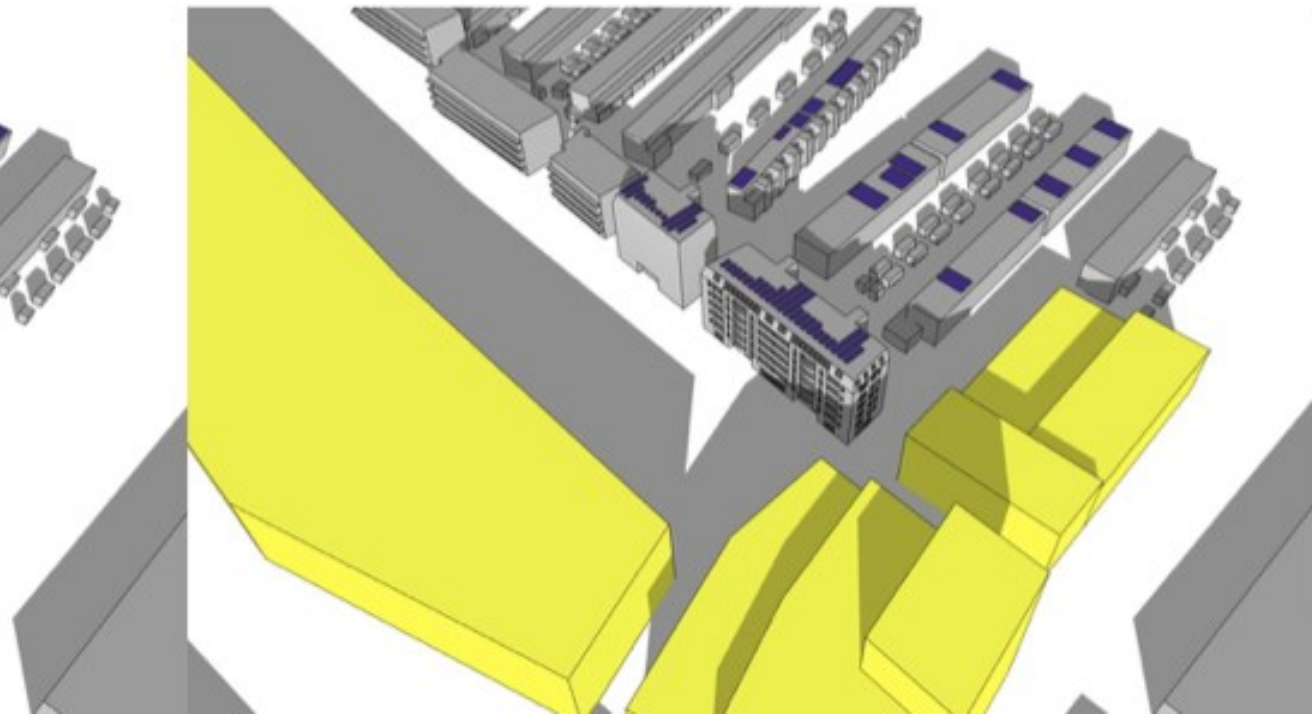
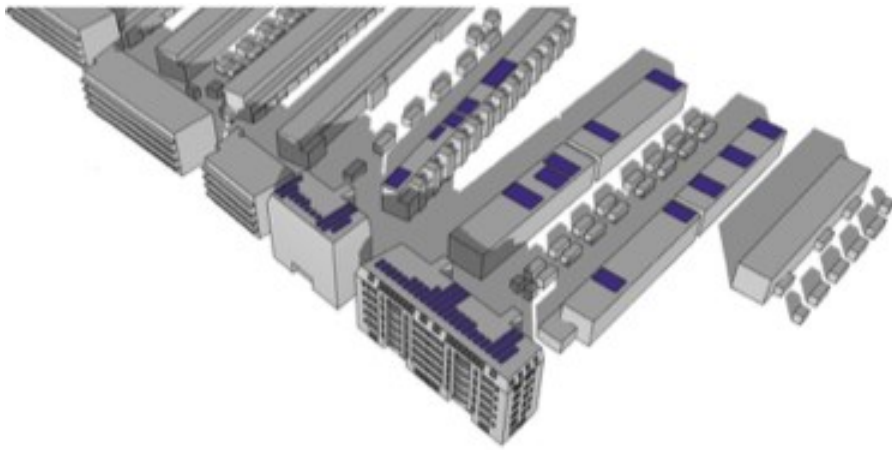
19 januari 15:00 uur



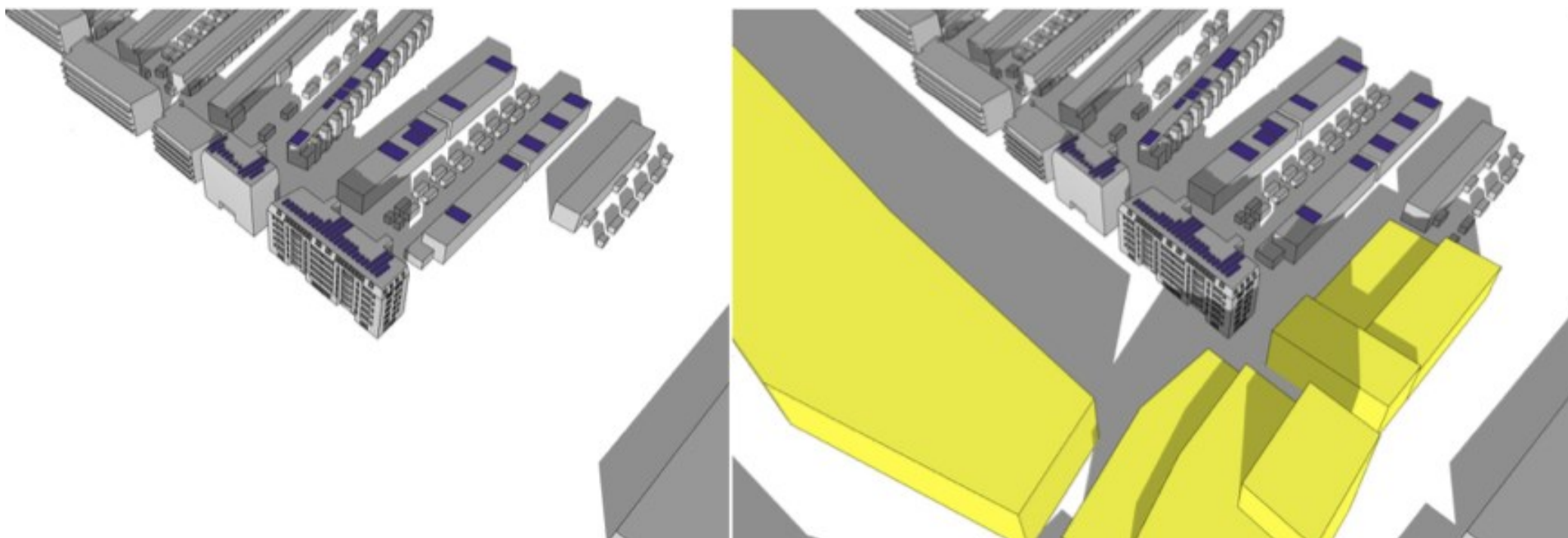
19 januari 16:00 uur



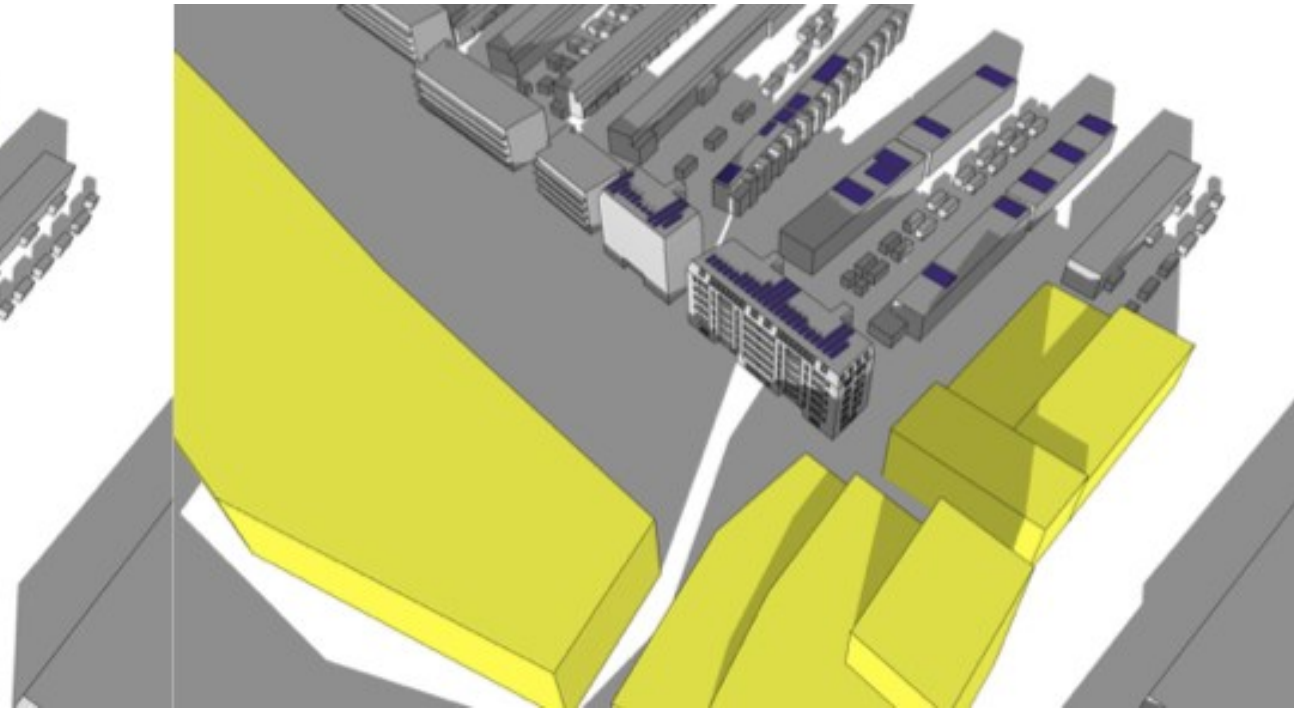
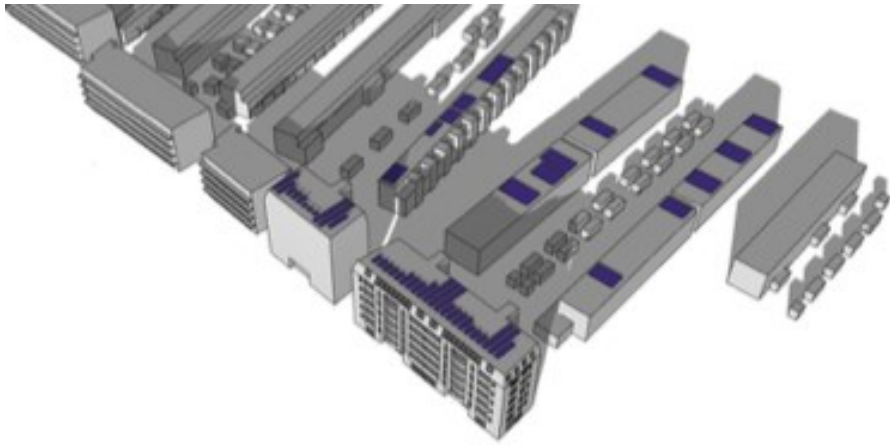
19 februari 14:00 uur



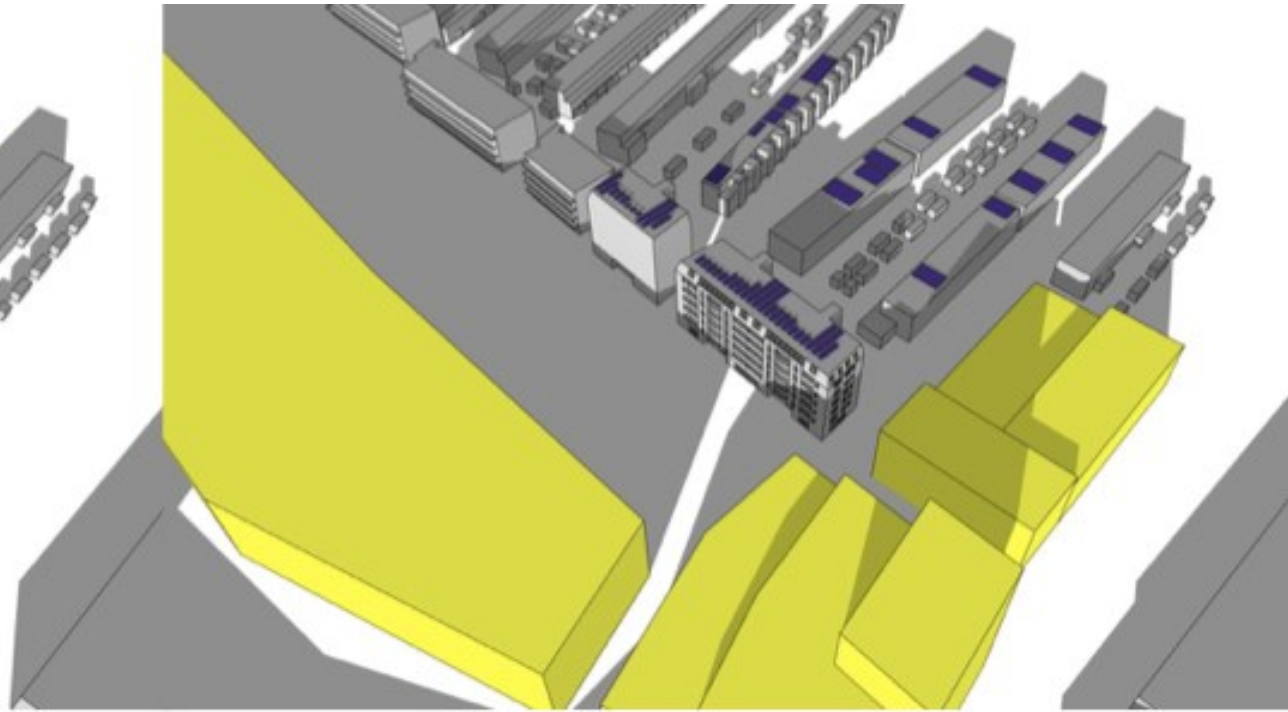
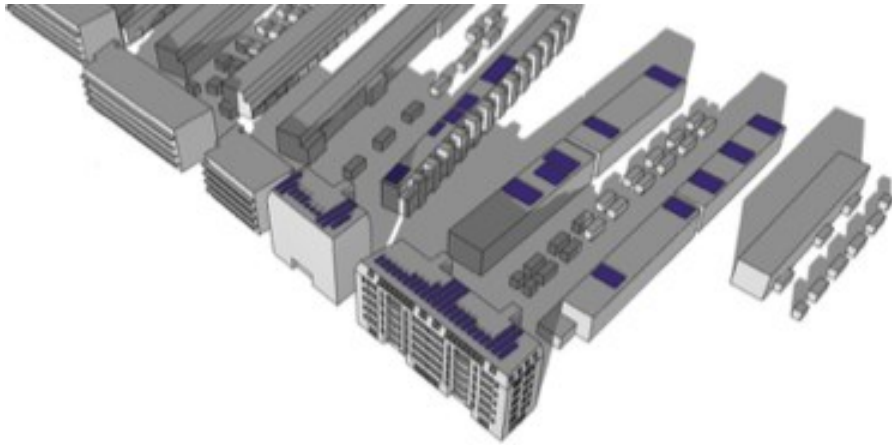
19 februari 15:00 uur



19 februari 15:20 uur, begin schaduw toren langs bestaande bebouwing Engelsestraat



19 februari 15:55 uur, einde extra schaduw toren



19 februari 16:00 uur