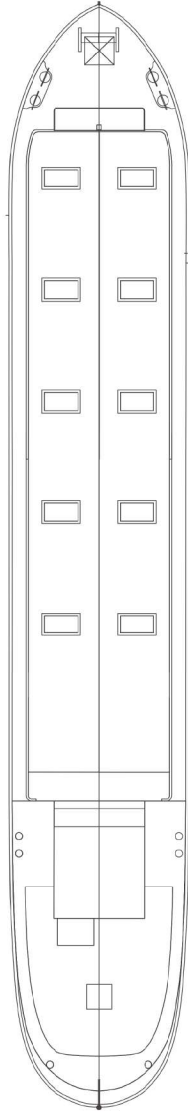
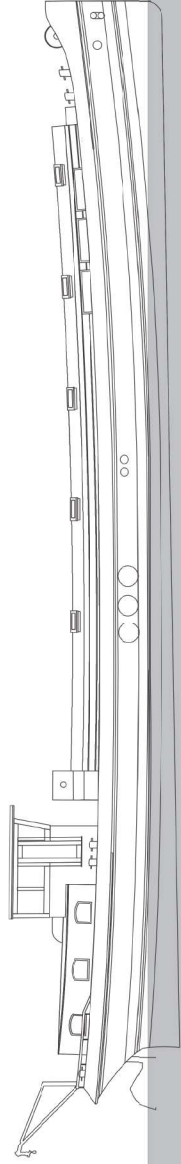


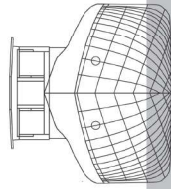
achter



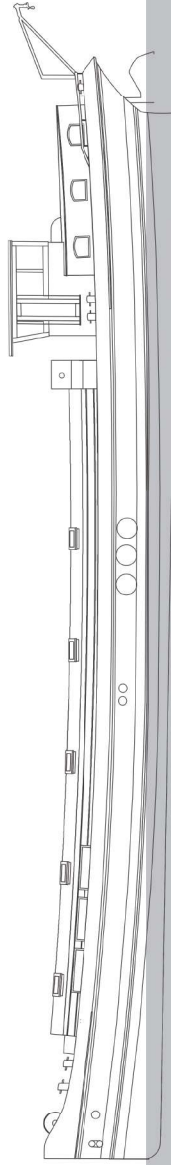
boven



stuurboord



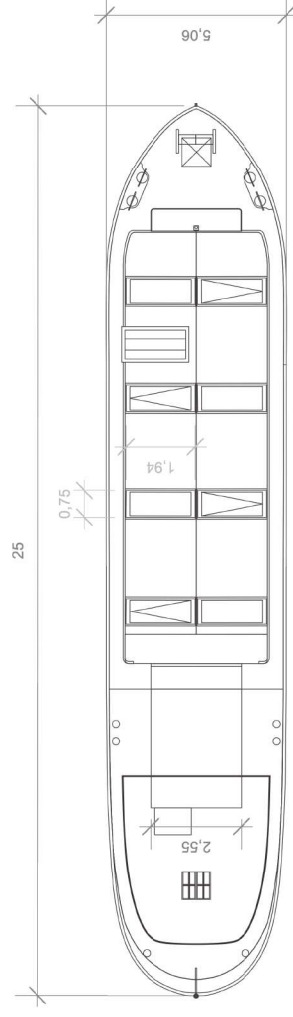
voor



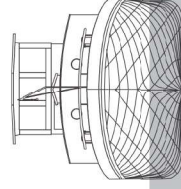
bakboord

AANPASSINGEN:

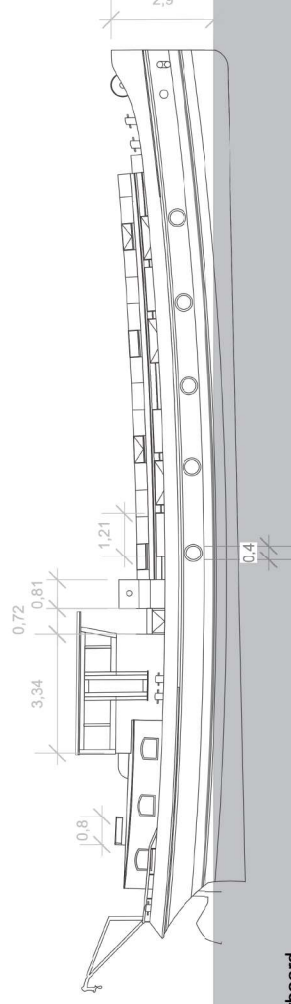
- inkorten schip naar 25m
- stuurhut verlengt met 1 raam
- herft verplaatst
- doorloop voorzien van laag glazen doosje
- de 3 ramen in den herhaald op zelfde wijze
- dakramen
- entree naar ruim
- koekkoek op roef
- patrijspoorten kunststof en kantelbaar



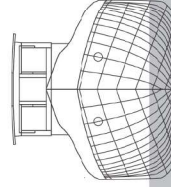
boven



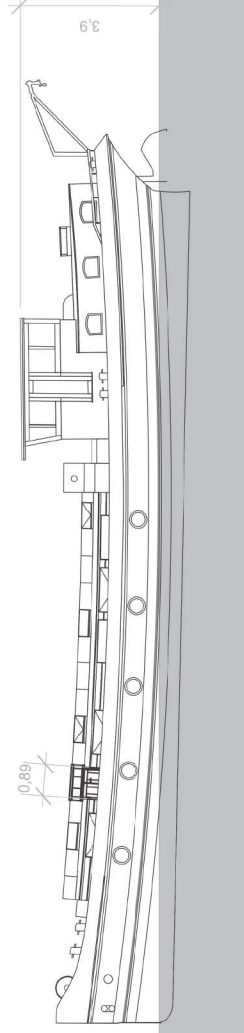
achter



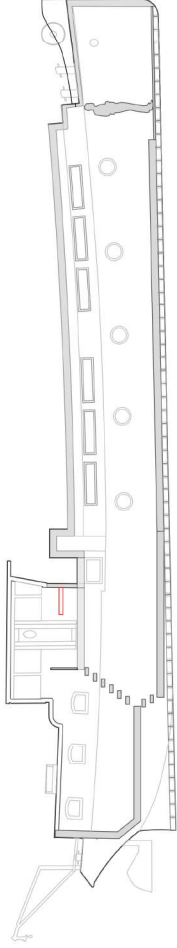
stuurboord



voor



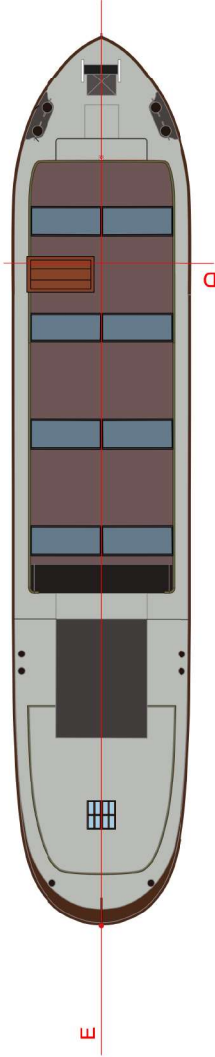
bakboord



lengte doorsnede E

RAL 7035
gangbord
dak roef

RAL 8019 of 6011
gangbord
dak roef



Bovenaanzicht kleur

RAL 9010
roef

RAL 8028
onderzijde stuurhut

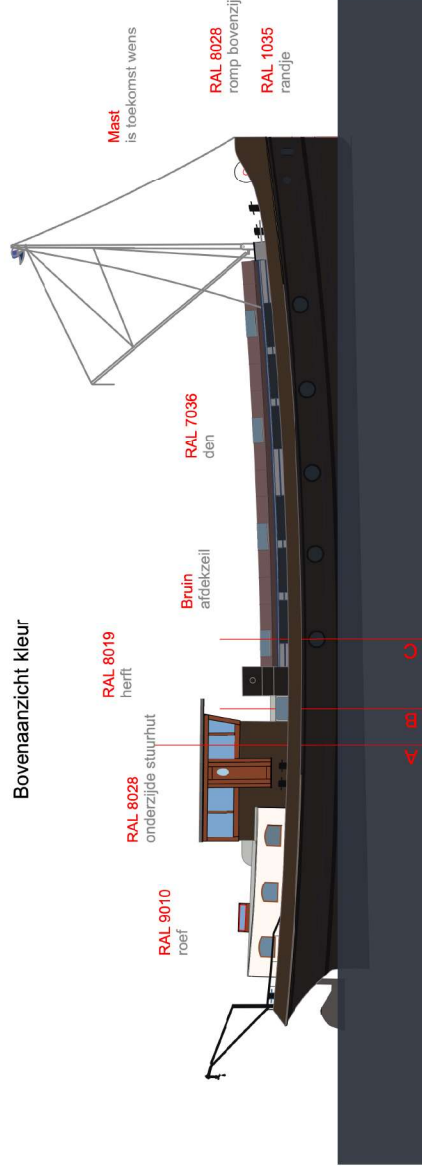
RAL 8019
herft

Bruin
afdekzeil

RAL 7036
den

Mast
is toekomst wens

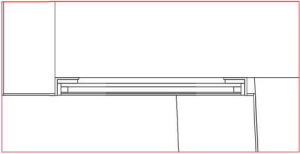
RAL 8028
romp bovenzijde
RAL 1035
randje



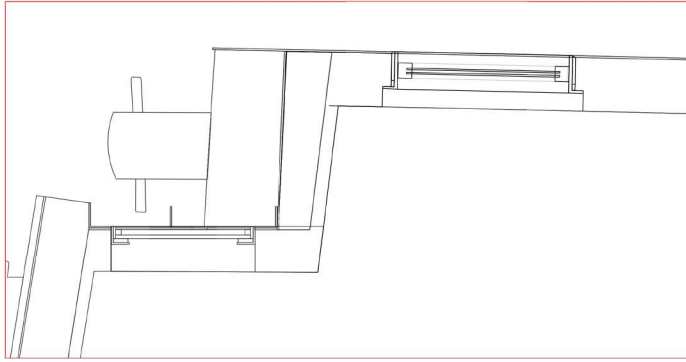
Voorraanzicht kleur

RAL 9004
alle kozijnen
strepen romp
bolders, railing
davit

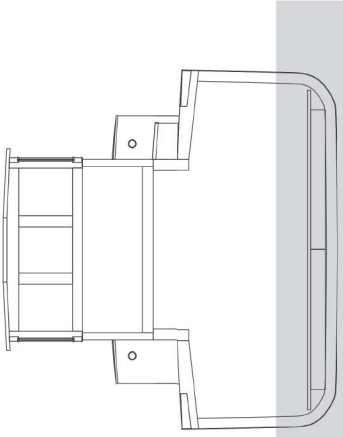
RAL 8019
romp onderzijde



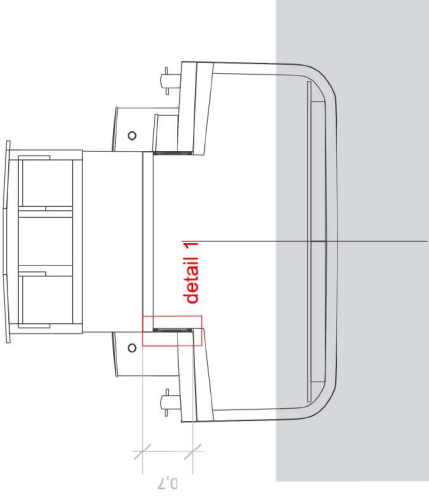
detail 1



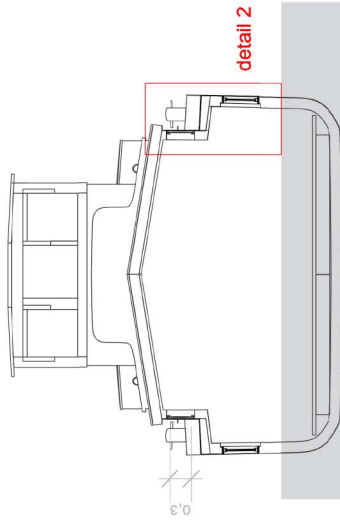
detail 2



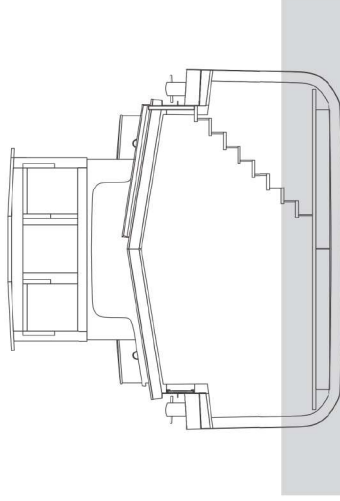
dwars doorsnede A



dwars doorsnede B



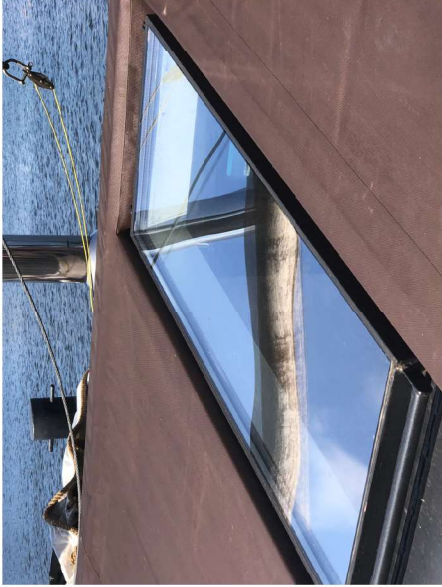
dwars doorsnede C



dwars doorsnede D



patrijspoort kunststof



dakramen staal



klapramen den staal



principe entree en verhuisluk met gasveren
luik in houten uitvoering in lijn met luikenkap