

Luchtkwaliteitsonderzoek
t.b.v. te bouwen parkeerdek
Buitenhaven



Luchtkwaliteitsonderzoek
t.b.v. te bouwen parkeerdek
Buitenhaven

Gemeente Kampen
Burgemeester Berghuisplein 1
8261 DD Kampen

Eenheid : Ruimtelijke Ontwikkeling
Documenttitel : Luchtkwaliteitsonderzoek t.b.v.
te bouwen parkeerdek Buitenhaven
Opstel datum : 20 April 2015

Inhoudsopgave

Samenvatting.....	4
1 Aanleiding.....	4
1.1 Doel.....	4
1.2. Aanpak.....	4
2 Wettelijk kader.....	5
2.1 Grenswaarden en richtwaarden.....	5
3 Onderzoeksgebied.....	6
3.1 Rekenmethode.....	6
4 Resultaten en beoordeling.....	7
4.1 Resultaten.....	7
4.2 Beoordeling.....	7
4.1 Conclusie.....	7
Bijlage 1 Invoerfiles (segment en receptor files).....	8
Bijlage 2 Rekenresultaten.....	9

Samenvatting

In dit luchtkwaliteitsonderzoek is middels het rekenprogramma NSL rekentool 2014 aangetoond dat t.b.v. bouw van een parkeerdek (Noordweg/Oranjesingel) niet tot overschrijdingen van de in de Wet milieubeheer (Wm) genoemde grenswaarden leiden. Het plan voldoet hiermee aan de eisen die de Wet op dit punt stelt.

1 Aanleiding

De gemeente is voornemens om de bestaande parkeerplaats aan de buitenhaven te upgraden naar een parkeerdek. Door deze verandering wordt een geringe extra verkeersstroom gegenereerd van ca. 189 vervoersbeweging per etmaal (worstcase). Door de eventuele toename van het extra verkeer kan dit effect hebben op de luchtkwaliteit van de omliggende omgeving. Aangetoond moet worden of de normen die hiervoor gelden niet worden overschreden. In Kampen is uit verschillende luchtkwaliteitsonderzoeken gebleken dat nergens sprake is van een overschrijding van de in de Wet genoemde grenswaarden. Dit is vooral te danken aan de relatief lage achtergrondconcentraties.

1.1 Doel

Het doel van het onderzoek is om op adequate wijze de luchtkwaliteit te toetsen aan de wet- en regelgeving waarbij uitgegaan wordt van de geprognosticeerde verkeersintensiteiten voor het jaar 2030. Het onderzoek is afgebakend tot de Noordweg en Oranjesingel als zijnde de meest kritische plaatsen ten aanzien van luchtverontreiniging tevens wordt hierbij aangesloten bij het gemeentelijke verkeersmodel en een berekening dat is uitgevoerd door het team Ontwerp en Inrichting. Wanneer uit de berekening blijkt dat er geen overschrijdingen van de grenswaarden plaatsvindt, kan gesteld worden dat dit voor de gehele omgeving te verwachten is.

Het luchtonderzoek richt zich op de volgende vraag: "Is er sprake van overschrijding van de grenswaarde voor stikstofdioxide (NO₂) en fijnstof (PM₁₀ en PM_{2,5}) rondom de parkeerplaats buitenhaven.

1.2. Aanpak

De luchtkwaliteit is voor het jaar 2030 (worstcase) berekend voor de Noordweg en Oranjesingel. Er zal een berekening worden uitgevoerd voor de stoffen NO₂, PM₁₀ en PM_{2,5}. Deze stoffen zijn in de Nederlandse situatie het meest kritisch ten opzichte van de grenswaarden.

2 Wettelijk kader

De Nederlandse wet- en regelgeving voor luchtkwaliteit in de buitenlucht vloeit voort uit titel 5.2 van de Wet milieubeheer (Wm). Deze wet is op 15 november 2007 in werking getreden en is de Nederlandse invoering van de EU-richtlijn voor luchtkwaliteit.

De Wm biedt de volgende grondslagen voor de onderbouwing dat een plan voldoet aan de wet- en regelgeving voor luchtkwaliteit:

1. het project leidt niet tot overschrijding van grenswaarden (art. 5.16 lid 1 sub a);
2. het plan draagt niet in betekenende mate bij aan een verslechtering van de luchtkwaliteit (art. 5.16 lid 1 sub c);
3. er worden grenswaarden overschreden, maar ten gevolge van het project is er per saldo sprake van een verbetering van de concentratie van de betreffende stof of blijft de concentratie gelijk (art.5.16 lid 1 sub b onder 1);
4. er worden grenswaarden overschreden, maar ten gevolge van een door het project optredend effect of een met het plan samenhangende maatregel is er per saldo sprake van een verbetering van de concentratie van de betreffende stof of blijft de concentratie gelijk (art. 5.16 lid 1 sub b onder 2);
5. het project is genoemd of beschreven in, dan wel past binnen of in elk niet in strijd is met een op grond van artikel 5.12 eerste lid, of artikel 5.13, eerste lid.

Hoewel kijkend naar de beperkte omvang van het plan en de criteria die gelden ten aanzien van de toetsing van de onder punt 1 genoemde grondslag is toch gekozen voor een kwalitatieve benadering. Dit houdt in dat doormiddel van een worstcase berekening, aangetoond wordt dat de grenswaarden niet worden overschreden.

2.1 Grenswaarden en richtwaarden

In de Wet milieubeheer zijn grens- en richtwaarden opgenomen voor o.a. de concentraties van NO₂ en PM₁₀ in de buitenlucht. Voor grenswaarden geldt dat de norm moet zijn bereikt en vervolgens in stand moet worden gehouden. De grenswaarden uit de Wm zijn in tabel 1 opgenomen.

Stof Grenswaarde Toetsingsperiode

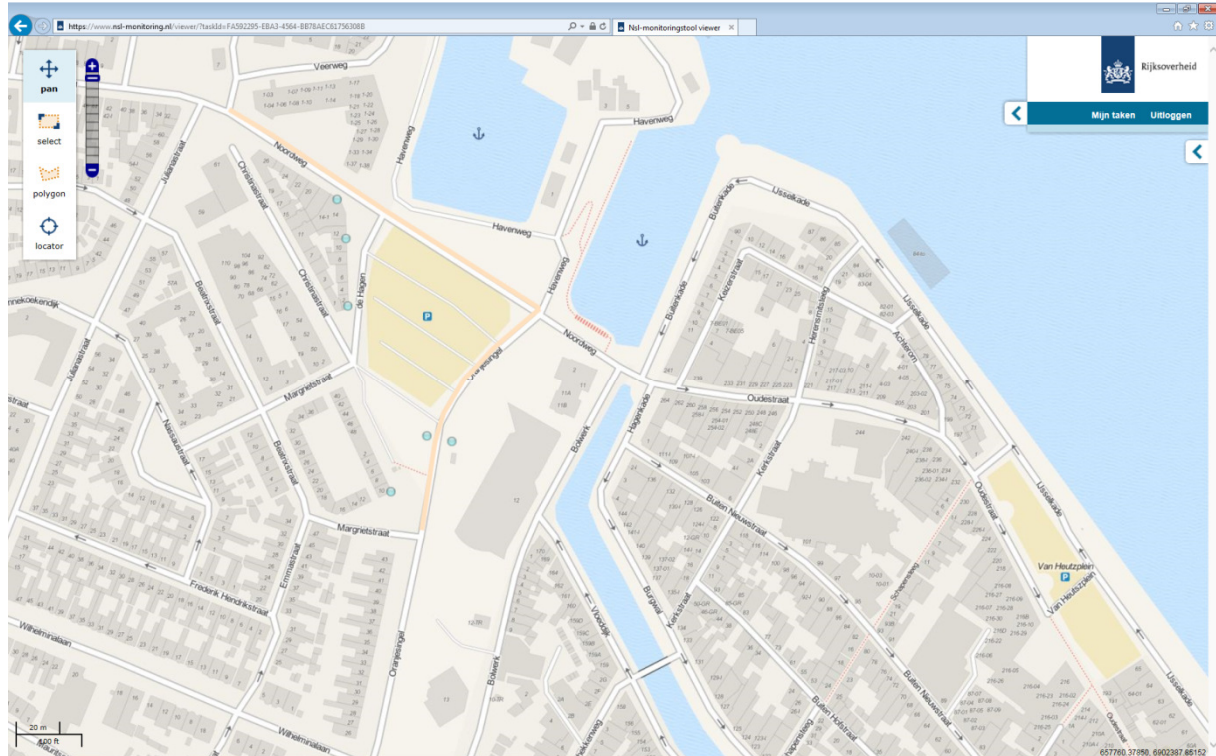
Stof	Grenswaarde
NO ₂ (stikstofoxide)	40 microgram/m ³ Jaargemiddelde 200 microgram/m ³ Het uurgemiddelde wat maximaal 18 x per jaar mag worden overschreden.
PM ₁₀ (fijnstof)	40 microgram/m ³ Jaargemiddelde 50 microgram/m ³ Het 24-uurgemiddelde wat maximaal 35 x per jaar mag worden overschreden.
PM _{2,5} (fijnstof)	25 microgram per m ³ , gedefinieerd als jaargemiddelde concentratie.

Tabel 1

De concentraties van stikstofdioxide (NO₂) en fijn stof (PM₁₀) en sinds januari 2015 ook (PM_{2,5}) zijn in Nederland het meest kritisch ten opzichte van de normen. Voor deze stoffen zijn in dit onderzoek berekeningen uitgevoerd. De overige stoffen uit de Wm zijn in Nederland niet kritisch ten aanzien van de normen.

3 Onderzoeksgebied

In Figuur 1 is het onderzoeksgebied weergegeven en de onderzochte wegen met betrekking tot de luchtkwaliteit van de omliggende wegen rondom de bestaande parkeerplaats en toekomstig parkeerdek (Noordweg en Oranjesingel). Rondom de parkeerplaats zijn verschillende rekenpunten ingevoerd. In bijlage 1 zijn de uitgangspunten van de berekening vermeld van de onderzochte wegen (segment) en rekenpunten (receptor).



Figuur 1

3.1 Rekenmethode

Voor het uitvoeren van de concentratieberekeningen is voor de omliggende wegen gebruik gemaakt van het meeste recente NSL rekentool 2014. Dit model is geschikt voor het uitvoeren van luchtkwaliteitsberekeningen op basis van standaardrekenmethode 1 en 2 conform de Regeling beoordeling luchtkwaliteit 2007.

4 Resultaten en beoordeling

In dit hoofdstuk zullen achtereenvolgens overzichten worden gegeven van de concentraties en de opgetreden overschrijdingen van grenswaarden en plandrempels van de stoffen: NO₂, PM₁₀, PM_{2,5} benzeen. Toetsing van de berekende concentraties geschiedt aan de grenswaarden en plandrempels voor NO₂, PM₁₀ en PM_{2,5} en overige stoffen.

4.1 Resultaten

In tabel 2 zijn de berekende concentraties en aantallen keren dat overschrijdingen hebben plaatsgevonden opgenomen.

Id	NO ₂ µg/m ³	PM ₁₀ µg/m ³	PM ₁₀ overschrijdingsdagen	PM _{2.5} µg/m ³	C6H6 µg/m ³	EC µg/m ³	Component X µg/m ³	NO ₂ uurwaarden	Jaar
213749	11.9	18.2	6.6	10.5	1.2	-	-	60.9	2030
213750	11.4	18.1	6.5	10.5	0.8	-	-	59.9	2030
213752	11.7	18.2	6.5	10.5	1.1	-	-	60.6	2030
213754	11.3	18.1	6.5	10.5	0.8	-	-	59.7	2030
213755	11.2	18	6.5	10.5	0.7	-	-	59.5	2030
213756	11.8	18.2	6.5	10.5	1.1	-	-	60.6	2030

Tabel 2

4.2 Beoordeling

Stikstofdioxide

De concentraties NO₂ zijn bepaald voor de locaties aangegeven in figuur 1 van het vorige hoofdstuk. Er zijn voor het jaar 2030 geen overschrijding van de wettelijke luchtkwaliteitsnorm te verwachten. De berekende waarde ligt ruim onder de grenswaarde. De uitgebreide rekenresultaten van de berekening zijn te vinden in bijlage 2.

Fijn stof (PM₁₀ en PM_{2,5})

Jaargemiddelde concentraties van PM₁₀ en PM_{2,5} en aantal 24 uurgemiddelde concentraties van PM₁₀ die de grenswaarde mogelijk hebben overschreden zijn bepaald voor de locaties aangegeven in figuur 1 van het vorige hoofdstuk.

Er zijn voor het jaar 2030 geen overschrijding van de wettelijke luchtkwaliteitsnorm voor de 24 uurgemiddelde concentraties PM₁₀ en PM_{2,5} te verwachten. De 24 uurgemiddelde concentraties PM₁₀ is voor een groot deel afhankelijk door het verschil in weersomstandigheden (zoals windsnelheid, neerslag en temperatuur) hierdoor kan de 24 uurgemiddelde concentraties PM₁₀ soms afwijken. De berekende waarde ligt ruim onder de grenswaarde. De uitgebreide rekenresultaten van de berekening zijn te vinden in bijlage 2.

Benzeen

Er bestaat geen vermoeden dat voor benzeen de wettelijke grenswaarde voor de jaargemiddelde concentratie (10 µg/m³) wordt overschreden.

Koolmonoxide

Er bestaat geen vermoeden dat voor CO de wettelijke luchtkwaliteitsnorm (10 mg/m³ als 8-uur gemiddelde concentratie) wordt overschreden.

4.1 Conclusie

Voor de wegen Noordweg/Oranjesingel is een worstcase luchtkwaliteits berekening uitgevoerd. Hierbij is berekend of de luchtkwaliteitsnormen worden overschreden tot en met het jaar 2030. Uit de berekening is gebleken dat geen overschrijdingen van de luchtkwaliteitsnormen zijn geconstateerd. De luchtkwaliteit levert dan ook geen belemmeringen op voor de ontwikkeling van het plan.

Bijlage 1 Invoerfiles (segment en receptor files)

Bijlage 2 Rekenresultaten

segment_id	receptorid	overheidid	overheid	nummer	naam	x	y	type	aant_pers	nsl	grond	afstand	wegtype	boom_fact	opmerking	opm_ovdr	gewijzigd	geomet_wl	actie	
130250	213745	166	Kampen		Balgweg, Kampen	185986.6	513542.4	6	0	t		0	14.3254	4	1				POINT(18	u
130251	213745	166	Kampen		Balgweg, Kampen	185986.6	513542.4	6	0	t		0	19.6159	4	1				POINT(18	u
130251	213746	166	Kampen		Balgweg, Kampen	185989.9	513576.7	6	0	t		0	14.5466	4	1				POINT(18	u
130250	213746	166	Kampen		Balgweg, Kampen	185989.9	513576.7	6	0	t		0	19.4777	4	1				POINT(18	u
130252	213747	166	Kampen		Balgweg, Kampen	185934.8	513585.4	6	0	t		0	13.4863	92	1				POINT(18	u
130252	213748	166	Kampen		Balgweg, Kampen	185927.2	513560.6	6	0	t		0	12.5137	92	1				POINT(18	u
1347789	213749	0			Oranjesingel nabij weg	190439.1	508401.2		0	t		0	4.6	4	1		20-4-2015 12:12	POINT(19	u	
1347789	213750	0			Oranjesingel 10	190422	508374.3		0	t		0	17.41	4	1		20-4-2015 12:14	POINT(19	u	
1347790	213752	0			Noordweg 14	190395.1	508514.6		0	t		0	8.37	4	1		20-4-2015 12:21	POINT(19	u	
1347790	213754	0			De hagen 12/10	190399.5	508495.9		0	t		0	21.62	4	1		20-4-2015 12:22	POINT(19	u	
1347788	213755	0			De hagen 2	190400.7	508463.5		0	t		0	48.29	4	1		20-4-2015 12:24	POINT(19	u	
1347789	213756	0			Oranjesingel 12 zijde	190451.1	508398.6		0	t		0	7.66	4	1		20-4-2015 12:27	POINT(19	u	

bebdicht_r_a_toepas_ra_scherm_s_hoogte_rstagf_lv	int_lv	int_lv_dyn	stagf_mv	int_mv	stagf_zv	int_zv	stagf_bv	int_bv	park_bewe	opmerking	gewijzigd
0	3787	0	0	186	0	116	0	0	0		0
0	3787	0	0	186	0	116	0	0	0		0
0	3269	0	0	314	0	200	0	0	0		0
0	3269	0	0	314	0	200	0	0	0		0
0	3269	0	0	314	0	200	0	0	0		0
0	3269	0	0	314	0	200	0	0	0		0
0	3269	0	0	314	0	200	0	0	0		0
0	3269	0	0	314	0	200	0	0	0		0
0	3269	0	0	314	0	200	0	0	0		0
0	3269	0	0	314	0	200	0	0	0		0
0	3269	0	0	314	0	200	0	0	0		0
0	3269	0	0	314	0	200	0	0	0		0
0	3269	0	0	314	0	200	0	0	0		0
0	3269	0	0	314	0	200	0	0	0		0
0	3269	0	0	314	0	200	0	0	0		0
0	12998	0	0	1061	0	1074	0	0	0		0
0	12998	0	0	1061	0	1074	0	0	0		0
0	12998	0	0	1061	0	1074	0	0	0		0
0	12998	0	0	1061	0	1074	0	0	0		0
0	12998	0	0	1061	0	1074	0	0	0		0
0	12998	0	0	1061	0	1074	0	0	0		0
0	12998	0	0	1061	0	1074	0	0	0		0
0	12998	0	0	1061	0	1074	0	0	0		0
0	14155	0	0	1385	0	1061	0	0	0		0
0	3269	0	0	314	0	200	0	0	0		0
0	3269	0	0	314	0	200	0	0	0		0
0	3269	0	0	314	0	200	0	0	0		0
0	14155	0	0	1385	0	1061	0	0	0		0
0	14155	0	0	1385	0	1061	0	0	0		0
0	14155	0	0	1385	0	1061	0	0	0		0
0	14155	0	0	1385	0	1061	0	0	0		0
0	14155	0	0	1385	0	1061	0	0	0		0
0	14155	0	0	1385	0	1061	0	0	0		0
0	14155	0	0	1385	0	1061	0	0	0		0
0	14155	0	0	1385	0	1061	0	0	0		0
0	14155	0	0	1385	0	1061	0	0	0		0
0	14155	0	0	1385	0	1061	0	0	0		0
0	3269	0	0	314	0	200	0	0	0		0
0	3269	0	0	314	0	200	0	0	0		0
0	3269	0	0	314	0	200	0	0	0		0
0	3269	0	0	314	0	200	0	0	0		0
0	12015	0	0	984	0	662	0	0	0		0
0	3269	0	0	314	0	200	0	0	0		0
0	3269	0	0	314	0	200	0	0	0		0
0	3269	0	0	314	0	200	0	0	0		0
0	3269	0	0	314	0	200	0	0	0		0
0	11684	0	0	1068	0	689	0	0	0		0
0	11947	0	0	978	0	658	0	0	0		0
0	11684	0	0	1068	0	689	0	0	0		0
0	9200	0	0	718	0	522	0	0	0		0
0	10676	0	0	762	0	461	0	0	0		0
0	9200	0	0	718	0	522	0	0	0		0
0	9200	0	0	718	0	522	0	0	0		0
0	10419	0	0	882	0	450	0	0	0		0
0	10419	0	0	882	0	450	0	0	0		0
0	10419	0	0	882	0	450	0	0	0		0
0	10419	0	0	882	0	450	0	0	0		0
0	10419	0	0	882	0	450	0	0	0		0
0	10419	0	0	882	0	450	0	0	0		0
0	10419	0	0	882	0	450	0	0	0		0
0	10419	0	0	882	0	450	0	0	0		0
0	10419	0	0	882	0	450	0	0	0		0
0	10419	0	0	882	0	450	0	0	0		0
0	10419	0	0	882	0	450	0	0	0		0
0	3855	0	0	241	0	39	0	0	0		0
0	3855	0	0	241	0	39	0	0	0		0
0	3855	0	0	241	0	39	0	0	0		0
0	3855	0	0	241	0	39	0	0	0		0
0	8748	0	0	583	0	304	0	0	0		0
0	8748	0	0	583	0	304	0	0	0		0
0	4473	0	0	379	0	139	0	0	0		0
0	4473	0	0	379	0	139	0	0	0		0
0	4473	0	0	379	0	139	0	0	0		0
0	4473	0	0	379	0	139	0	0	0		0
0	4473	0	0	379	0	139	0	0	0		0
0	4473	0	0	379	0	139	0	0	0		0
0	4473	0	0	379	0	139	0	0	0		0
0	4473	0	0	379	0	139	0	0	0		0
0	4473	0	0	379	0	139	0	0	0		0
0	4309	0	0	328	0	132	0	0	0		0
0	4309	0	0	328	0	132	0	0	0		0
0	4309	0	0	328	0	132	0	0	0		0
0	4309	0	0	328	0	132	0	0	0		0
0	4309	0	0	328	0	132	0	0	0		0
0	3056	0	0	191	0	31	0	0	0		0
0	3056	0	0	191	0	31	0	0	0		0
0	3056	0	0	191	0	31	0	0	0		0

0.2

		0	3094	0	0	272	0	124	0	0	0
		0	3094	0	0	272	0	124	0	0	0
		0	3094	0	0	272	0	124	0	0	0
		0	3094	0	0	272	0	124	0	0	0
		0	3094	0	0	272	0	124	0	0	0
		0	3094	0	0	272	0	124	0	0	0
		0	3094	0	0	272	0	124	0	0	0
		0	3094	0	0	272	0	124	0	0	0
		0	3094	0	0	272	0	124	0	0	0
		0	3094	0	0	272	0	124	0	0	0
		0	3094	0	0	272	0	124	0	0	0
		0	6658	0	0	707	0	578	0	0	0
		0	6658	0	0	707	0	578	0	0	0
		0	6658	0	0	707	0	578	0	0	0
		0	6658	0	0	707	0	578	0	0	0
		0	6658	0	0	707	0	578	0	0	0
		0	3094	0	0	272	0	124	0	0	0
		0	3094	0	0	272	0	124	0	0	0
		0	3094	0	0	272	0	124	0	0	0
		0	3094	0	0	272	0	124	0	0	0
		0	3094	0	0	272	0	124	0	0	0
		0	3094	0	0	272	0	124	0	0	0
		0	3422	0	0	291	0	118	0	0	0
		0	6658	0	0	707	0	578	0	0	0
		0	3094	0	0	272	0	124	0	0	0
		0	3094	0	0	272	0	124	0	0	0
		0	3094	0	0	272	0	124	0	0	0
		0	3094	0	0	272	0	124	0	0	0
		0	3094	0	0	272	0	124	0	0	0
		0	3094	0	0	272	0	124	0	0	0
		0	3094	0	0	272	0	124	0	0	0
		0	3094	0	0	272	0	124	0	0	0
		0	3938	0	0	334	0	144	0	0	0
		0	3938	0	0	334	0	144	0	0	0
		0	3938	0	0	334	0	144	0	0	0
		0	3938	0	0	334	0	144	0	0	0
		0	3098	0	0	278	0	117	0	0	0
		0	3098	0	0	278	0	117	0	0	0
		0	3098	0	0	278	0	117	0	0	0
		0	3699	0	0	269	0	66	0	0	0
		0	3735	0	0	240	0	51	0	0	0
		0	3735	0	0	240	0	51	0	0	0
		0	3735	0	0	240	0	51	0	0	0
		0	3735	0	0	240	0	51	0	0	0
		0	3735	0	0	240	0	51	0	0	0
		0	3735	0	0	240	0	51	0	0	0
		0	3735	0	0	240	0	51	0	0	0
		0	3735	0	0	240	0	51	0	0	0
		0	3735	0	0	240	0	51	0	0	0
		0	1582		0	267	0	237	0	0	0
		0	1348		0	251	0	212	0	0	0
		0	2864		0	514	0	446	0	0	0
		0	3747	0	0	257	0	144	0	0	0
		0	3735	0	0	256	0	144	0	0	0
0	0	0	10510	0	0	543	0	651	0	0	0
0	0	0	37735	0	0	1708	0	1763	0	0	0
0	0	0	28414	0	0	1359	0	1284	0	0	0
0	0	0	17466	0	0	1032	0	962	0	0	0
0	0	0	37064	0	0	1704	0	1952	0	0	0
0	0	0	16098	0	0	1563	0	1646	0	0	0
0	0	0	16098	0	0	1563	0	1646	0	0	0
0	0	0	16098	0	0	1563	0	1646	0	0	0
0	0	0	16098	0	0	1563	0	1646	0	0	0
0	0	0	16098	0	0	1563	0	1646	0	0	0
0	0	0	16098	0	0	1563	0	1646	0	0	0
0	0	0	16098	0	0	1563	0	1646	0	0	0
0	0	0	16098	0	0	1563	0	1646	0	0	0
0	0	0	16098	0	0	1563	0	1646	0	0	0
0	0	0	16098	0	0	1563	0	1646	0	0	0
0	0	0	16098	0	0	1563	0	1646	0	0	0
0	0	0	16098	0	0	1563	0	1646	0	0	0
0	0	0	16098	0	0	1563	0	1646	0	0	0
0	0	0	16098	0	0	1563	0	1646	0	0	0
0	0	0	16098	0	0	1563	0	1646	0	0	0
0	0	0	16098	0	0	1563	0	1646	0	0	0
0	0	0	16098	0	0	1563	0	1646	0	0	0
0	0	0	16098	0	0	1563	0	1646	0	0	0
0	0	0	16098	0	0	1563	0	1646	0	0	0
0	0	0	16098	0	0	1563	0	1646	0	0	0
0	0	0	16098	0	0	1563	0	1646	0	0	0
0	0	0	16098	0	0	1563	0	1646	0	0	0
0	0	0	16098	0	0	1563	0	1646	0	0	0
0	0	0	16098	0	0	1563	0	1646	0	0	0
0	0	0	16023	0	0	1564	0	1642	0	0	0
0	0	0	16023	0	0	1564	0	1642	0	0	0

0	0	0	16023	0	0	1564	0	1642	0	0	0
0	0	0	16023	0	0	1564	0	1642	0	0	0
0	0	0	16023	0	0	1564	0	1642	0	0	0
0	0	0	16023	0	0	1564	0	1642	0	0	0
0	0	0	16023	0	0	1564	0	1642	0	0	0
0	0	0	16023	0	0	1564	0	1642	0	0	0
0	0	0	12164	0	0	1392	0	1434	0	0	0
0	0	0	2125	0	0	81	0	100	0	0	0
0	0	0	1812	0	0	97	0	107	0	0	0
0	0	0	1812	0	0	97	0	107	0	0	0
0	0	0	12164	0	0	1392	0	1434	0	0	0
0	0	0	2125	0	0	81	0	100	0	0	0
0	0	0	1812	0	0	97	0	107	0	0	0
0	0	0	12164	0	0	1392	0	1434	0	0	0
0	0	0	2125	0	0	81	0	100	0	0	0
0	0	0	12164	0	0	1392	0	1434	0	0	0
0	0	0	1812	0	0	97	0	107	0	0	0
0	0	0	2125	0	0	81	0	100	0	0	0
0	0	0	7377	0	0	1067	0	1157	0	0	0
0	0	0	7377	0	0	1067	0	1157	0	0	0
0	0	0	12164	0	0	1392	0	1434	0	0	0
0	0	0	7377	0	0	1067	0	1157	0	0	0
0	0	0	12164	0	0	1392	0	1434	0	0	0
0	0	0	2125	0	0	81	0	100	0	0	0
0	0	0	7767	0	0	947	0	841	0	0	0
0	0	0	12164	0	0	1392	0	1434	0	0	0
0	0	0	7377	0	0	1067	0	1157	0	0	0
16.1	4.7	0	7767	0	0	947	0	841	0	0	0
0	0	0	12164	0	0	1392	0	1434	0	0	0
0	0	0	12164	0	0	1392	0	1434	0	0	0
25.5	4.7	0	7767	0	0	947	0	841	0	0	0
0	0	0	7377	0	0	1067	0	1157	0	0	0
0	0	0.083965	19570	0	0.072937	2459	0.073599	2590	0	0	0
36.1	3.9	0	7767	0	0	947	0	841	0	0	0
0	0	0.143613	27395	0	0.125099	3421	0.123646	3429	0	0	0
0	0	0.143613	27395	0	0.125099	3421	0.123646	3429	0	0	0
0	0	0.143613	27395	0	0.125099	3421	0.123646	3429	0	0	0
0	0	0.143613	27395	0	0.125099	3421	0.123646	3429	0	0	0
0	0	0.143613	27395	0	0.125099	3421	0.123646	3429	0	0	0
0	0	0.143613	27395	0	0.125099	3421	0.123646	3429	0	0	0
0	0	0.143613	27395	0	0.125099	3421	0.123646	3429	0	0	0
0	0	0.143613	27395	0	0.125099	3421	0.123646	3429	0	0	0
0	0	0.143613	27395	0	0.125099	3421	0.123646	3429	0	0	0
0	0	0.143613	27395	0	0.125099	3421	0.123646	3429	0	0	0
0	0	0.143613	27395	0	0.125099	3421	0.123646	3429	0	0	0
0	0	0	31275	0	0	3164	0	5081	0	0	0
0	0	0	30356	0	0	2454	0	4575	0	0	0
0	0	0	31275	0	0	3164	0	5081	0	0	0
0	0	0	31275	0	0	3164	0	5081	0	0	0
0	0	0	30356	0	0	2454	0	4575	0	0	0
0	0	0	30356	0	0	2454	0	4575	0	0	0
0	0	0	31275	0	0	3164	0	5081	0	0	0
0	0	0	31275	0	0	3164	0	5081	0	0	0
0	0	0	31275	0	0	3164	0	5081	0	0	0
0	0	0	31275	0	0	3164	0	5081	0	0	0
0	0	0	31275	0	0	3164	0	5081	0	0	0
0	0	0	31275	0	0	3164	0	5081	0	0	0
0	0	0	31275	0	0	3164	0	5081	0	0	0
0	0	0	31275	0	0	3164	0	5081	0	0	0
0	0	0	30356	0	0	2454	0	4575	0	0	0
0	0	0	30356	0	0	2454	0	4575	0	0	0
0	0	0	31275	0	0	3164	0	5081	0	0	0
0	0	0	30356	0	0	2454	0	4575	0	0	0
0	0	0	31275	0	0	3164	0	5081	0	0	0
0	0	0	30356	0	0	2454	0	4575	0	0	0
0	0	0	31275	0	0	3164	0	5081	0	0	0
0	0	0	30356	0	0	2454	0	4575	0	0	0
0	0	0	31275	0	0	3164	0	5081	0	0	0
0	0	0	30356	0	0	2454	0	4575	0	0	0
0	0	0	31275	0	0	3164	0	5081	0	0	0
0	0	0	30356	0	0	2454	0	4575	0	0	0
26.3	0.2	0	30356	0	0	2454	0	4575	0	0	0
0	0	0	31275	0	0	3164	0	5081	0	0	0
13	0.3	0	31275	0	0	3164	0	5081	0	0	0
33.5	1.3	0	30356	0	0	2454	0	4575	0	0	0
17.8	1	0	31275	0	0	3164	0	5081	0	0	0
0	0	0	30356	0	0	2454	0	4575	0	0	0
0	0	0	31275	0	0	3164	0	5081	0	0	0
0	0	0	30356	0	0	2454	0	4575	0	0	0
0	0	0	31275	0	0	3164	0	5081	0	0	0

0	0	0	28756	0	0	3063	0	4977	0	0	0
0	0	0	2619	0	0	103	0	125	0	0	0
0	0	0	2335	0	0	117	0	152	0	0	0
0	0	0	27944	0	0	2316	0	4425	0	0	0
0	0	0	2335	0	0	117	0	152	0	0	0
0	0	0	28756	0	0	3063	0	4977	0	0	0
0	0	0	27944	0	0	2316	0	4425	0	0	0
0	0	0	2619	0	0	103	0	125	0	0	0
0	0	0	2335	0	0	117	0	152	0	0	0
19.4	2.8	0	27944	0	0	2316	0	4425	0	0	0
6.2	3	0	28756	0	0	3063	0	4977	0	0	0
0	0	0	2619	0	0	103	0	125	0	0	0
0	0	0	10962	0	0	364	0	395	0	0	0
0	0	0	10962	0	0	364	0	395	0	0	0
0	0	0	11517	0	0	401	0	422	0	0	0
0	0	0	10962	0	0	364	0	395	0	0	0
5.4	0.1	0	11517	0	0	401	0	422	0	0	0
9.4	3.2	0	28756	0	0	3063	0	4977	0	0	0
30.9	2.9	0	27944	0	0	2316	0	4425	0	0	0
22.4	3.4	0	28756	0	0	3063	0	4977	0	0	0
8.5	2	0	11517	0	0	401	0	422	0	0	0
34.1	3.8	0	27944	0	0	2316	0	4425	0	0	0
16.4	4.1	0	11517	0	0	401	0	422	0	0	0
22.1	4.1	0	28756	0	0	3063	0	4977	0	0	0
41	4.6	0	10962	0	0	364	0	395	0	0	0
34.5	4.2	0	27944	0	0	2316	0	4425	0	0	0
21.5	4.5	0.05807	40301	0	0.044593	3464	0.044592	5393	0	0	0
0	0	0.068799	38981	0	0.062097	2683	0.062092	4815	0	0	0
0	0	0.068799	38981	0	0.062097	2683	0.062092	4815	0	0	0
20.4	4.5	0.05807	40301	0	0.044593	3464	0.044592	5393	0	0	0
0	0	0.068799	38981	0	0.062097	2683	0.062092	4815	0	0	0
0	0	0.05807	40301	0	0.044593	3464	0.044592	5393	0	0	0
0	0	0.068799	38981	0	0.062097	2683	0.062092	4815	0	0	0
0	0	0	37019	0	0	3526	0	5152	0	0	0
0	0	0	3534	0	0	168	0	311	0	0	0
0	0	0.068799	38981	0	0.062097	2683	0.062092	4815	0	0	0
0	0	0	2002	0	0	117	0	116	0	0	0
37.3	2.5	0	37019	0	0	3526	0	5152	0	0	0
24.9	1.5	0	3534	0	0	168	0	311	0	0	0
0	0	0	2002	0	0	117	0	116	0	0	0
0	0	0.028819	36956	0	0.026588	2530	0.02659	4734	0	0	0
0	0	0	37019	0	0	3526	0	5152	0	0	0
0	0	0	3534	0	0	168	0	311	0	0	0
0	0	0	2002	0	0	117	0	116	0	0	0
0	0	0	2002	0	0	117	0	116	0	0	0
0	0	0.028819	36956	0	0.026588	2530	0.02659	4734	0	0	0
0	0	0	37019	0	0	3526	0	5152	0	0	0
0	0	0	3534	0	0	168	0	311	0	0	0
0	0	0	2002	0	0	117	0	116	0	0	0
0	0	0	1338	0	0	70	0	88	0	0	0
0	0	0	2204	0	0	107	0	208	0	0	0
0	0	0	8380	0	0	660	0	541	0	0	0
0	0	0	6339	0	0	736	0	878	0	0	0
0	0	0	2002	0	0	117	0	116	0	0	0
0	0	0	12799	0	0	1285	0	1349	0	0	0
0	0	0	6339	0	0	736	0	878	0	0	0
0	0	0	12799	0	0	1285	0	1349	0	0	0
0	0	0	2002	0	0	117	0	116	0	0	0
0	0	0	1338	0	0	70	0	88	0	0	0
0	0	0	8380	0	0	660	0	541	0	0	0
0	0	0	2204	0	0	107	0	208	0	0	0
0	0	0	6339	0	0	736	0	878	0	0	0
0	0	0	12799	0	0	1285	0	1349	0	0	0
42.2	1.5	0	2002	0	0	117	0	116	0	0	0
0	0	0	2002	0	0	117	0	116	0	0	0
0	0	0	8380	0	0	660	0	541	0	0	0
8.4	1.5	0	26446	0	0	2214	0	2751	0	0	0
9.6	1.5	0	26446	0	0	2214	0	2751	0	0	0
0	0	0	26446	0	0	2214	0	2751	0	0	0
0	0	0	1338	0	0	70	0	88	0	0	0
0	0	0	12799	0	0	1285	0	1349	0	0	0
0	0	0	6339	0	0	736	0	878	0	0	0
0	0	0	26446	0	0	2214	0	2751	0	0	0
0	0	0	12799	0	0	1285	0	1349	0	0	0
0	0	0	2204	0	0	107	0	208	0	0	0
0	0	0	6339	0	0	736	0	878	0	0	0
0	0	0	7443	0	0	751	0	769	0	0	0
0	0	0.028819	36956	0	0.026588	2530	0.02659	4734	0	0	0
0	0	0	7443	0	0	751	0	769	0	0	0
0	0	0	716	0	0	69	0	100	0	0	0
0	0	0	716	0	0	69	0	100	0	0	0
0	0	0	8380	0	0	660	0	541	0	0	0
0	0	0	9617	0	0	802	0	1086	0	0	0
0	0	0	12799	0	0	1285	0	1349	0	0	0
0	0	0	7069	0	0	806	0	982	0	0	0
0	0	0.028819	36956	0	0.026588	2530	0.02659	4734	0	0	0

0	0	0	26446	0	0	2214	0	2751	0	0	0
0	0	0	26446	0	0	2214	0	2751	0	0	0
0	0	0	37019	0	0	3526	0	5152	0	0	0
0	0	0	8380	0	0	660	0	541	0	0	0
0	0	0	1338	0	0	70	0	88	0	0	0
0	0	0	716	0	0	69	0	100	0	0	0
0	0	0	5363	0	0	539	0	581	0	0	0
0	0	0	7443	0	0	751	0	769	0	0	0
0	0	0	716	0	0	69	0	100	0	0	0
0	0	0.004311	36177	0	0.004095	2447	0.004094	4637	0	0	0
0	0	0	7443	0	0	751	0	769	0	0	0
0	0	0	5484	0	0	672	0	812	0	0	0
0	0	0	1583	0	0	132	0	166	0	0	0
0	0	0	1583	0	0	132	0	166	0	0	0
0	0	0	8023	0	0	672	0	919	0	0	0
0	0	0	1583	0	0	132	0	166	0	0	0
0	0	0	27781	0	0	2283	0	2839	0	0	0
0	0	0	5363	0	0	539	0	581	0	0	0
0	0	0.036098	34883	0	0.026427	2904	0.026433	3264	0	0	0
0	0	0	1583	0	0	132	0	166	0	0	0
0	0	0	5484	0	0	672	0	812	0	0	0
0	0	0	8023	0	0	672	0	919	0	0	0
0	0	0.113469	44825	0	0.089894	4034	0.089898	5741	0	0	0
0	0	0	29353	0	0	2109	0	2805	0	0	0
0	0	0	29353	0	0	2109	0	2805	0	0	0
0	0	0	29353	0	0	2109	0	2805	0	0	0
0	0	0.004311	36177	0	0.004095	2447	0.004094	4637	0	0	0
0	0	0.113469	44825	0	0.089894	4034	0.089898	5741	0	0	0
0	0	0	29353	0	0	2109	0	2805	0	0	0
0	0	0	29353	0	0	2109	0	2805	0	0	0
0	0	0	5484	0	0	672	0	812	0	0	0
0	0	0	29353	0	0	2109	0	2805	0	0	0
0	0	0	27781	0	0	2283	0	2839	0	0	0
0	0	0	5363	0	0	539	0	581	0	0	0
0	0	0.06082	34786	0	0.055279	2779	0.055281	3626	0	0	0
0	0	0.036098	34883	0	0.026427	2904	0.026433	3264	0	0	0
0	0	0.004311	36177	0	0.004095	2447	0.004094	4637	0	0	0
0	0	0	29353	0	0	2109	0	2805	0	0	0
0	0	0	27781	0	0	2283	0	2839	0	0	0
0	0	0	5363	0	0	539	0	581	0	0	0
0	0	0.06082	34786	0	0.055279	2779	0.055281	3626	0	0	0
0	0	0.113469	44825	0	0.089894	4034	0.089898	5741	0	0	0
0	0	0	5363	0	0	539	0	581	0	0	0
0	0	0	29353	0	0	2109	0	2805	0	0	0
0	0	0.06082	34786	0	0.055279	2779	0.055281	3626	0	0	0
0	0	0	33094	0	0	2824	0	3413	0	0	0
0	0	0.004311	36177	0	0.004095	2447	0.004094	4637	0	0	0
0	0	0.06082	34786	0	0.055279	2779	0.055281	3626	0	0	0
0	0	0	33094	0	0	2824	0	3413	0	0	0
0	0	0	30399	0	0	2802	0	3475	0	0	0
0	0	0	33094	0	0	2824	0	3413	0	0	0
0	0	0.113469	44825	0	0.089894	4034	0.089898	5741	0	0	0
0	0	0.036098	34883	0	0.026427	2904	0.026433	3264	0	0	0
0	0	0	30399	0	0	2802	0	3475	0	0	0
0	0	0	29353	0	0	2109	0	2805	0	0	0
0	0	0.013253	32292	0	0.010665	2663	0.010664	3552	0	0	0
0	0	0.004311	36177	0	0.004095	2447	0.004094	4637	0	0	0
0	0	0	30399	0	0	2802	0	3475	0	0	0
0	0	0.013253	32292	0	0.010665	2663	0.010664	3552	0	0	0
0	0	0	30399	0	0	2802	0	3475	0	0	0
0	0	0.004069	34883	0	0.002979	2904	0.00298	3264	0	0	0
0	0	0.06082	34786	0	0.055279	2779	0.055281	3626	0	0	0
0	0	0	29353	0	0	2109	0	2805	0	0	0
0	0	0.013253	32292	0	0.010665	2663	0.010664	3552	0	0	0
0	0	0	30399	0	0	2802	0	3475	0	0	0
0	0	0.013253	32292	0	0.010665	2663	0.010664	3552	0	0	0
0	0	0	33094	0	0	2824	0	3413	0	0	0
0	0	0	30399	0	0	2802	0	3475	0	0	0
0	0	0.013253	32292	0	0.010665	2663	0.010664	3552	0	0	0
0	0	0	30399	0	0	2802	0	3475	0	0	0
0	0	0.06082	34786	0	0.055279	2779	0.055281	3626	0	0	0
0	0	0.013253	32292	0	0.010665	2663	0.010664	3552	0	0	0
0	0	0	30399	0	0	2802	0	3475	0	0	0
0	0	0.034343	71193	0	0.027013	5597	0.027013	7664	0	0	0
0	0	0	1543	0	0	147	0	253	0	0	0
0	0	0	4209	0	0	181	0	181	0	0	0
0	0	0	1543	0	0	147	0	253	0	0	0
0	0	0.013253	32292	0	0.010665	2663	0.010664	3552	0	0	0
0	0	0	30399	0	0	2802	0	3475	0	0	0
0	0	0.013253	32292	0	0.010665	2663	0.010664	3552	0	0	0
0	0	0	1543	0	0	147	0	253	0	0	0
0	0	0	28873	0	0	2640	0	3234	0	0	0
0	0	0.044637	74139	0	0.037504	6001	0.037506	8261	0	0	0
0	0	0	2219	0	0	99	0	160	0	0	0
0	0	0	30069	0	0	2564	0	3393	0	0	0
0	0	0	28873	0	0	2640	0	3234	0	0	0
0	0	0	2219	0	0	99	0	160	0	0	0

0	0	0	28873	0	0	2640	0	3234	0	0	0
0	0	0	30069	0	0	2564	0	3393	0	0	0
0	0	0.06082	34786	0	0.055279	2779	0.055281	3626	0	0	0
0	0	0	28873	0	0	2640	0	3234	0	0	0
0	0	0	30069	0	0	2564	0	3393	0	0	0
0	0	0	28873	0	0	2640	0	3234	0	0	0
0	0	0	30069	0	0	2564	0	3393	0	0	0
0	0	0	28873	0	0	2640	0	3234	0	0	0
0	0	0.06082	34786	0	0.055279	2779	0.055281	3626	0	0	0
0	0	0	28873	0	0	2640	0	3234	0	0	0
0	0	0	30069	0	0	2564	0	3393	0	0	0
0	0	0	33094	0	0	2824	0	3413	0	0	0
0	0	0	30069	0	0	2564	0	3393	0	0	0
0	0	0	4209	0	0	181	0	181	0	0	0
16.8	0.6	0	33094	0	0	2824	0	3413	0	0	0
0	0	0	4209	0	0	181	0	181	0	0	0
0	0	0.06082	34786	0	0.055279	2779	0.055281	3626	0	0	0
0	0	0	28873	0	0	2640	0	3234	0	0	0
0	0	0	33094	0	0	2824	0	3413	0	0	0
0	0	0	30069	0	0	2564	0	3393	0	0	0
44.8	0.4	0.06082	34786	0	0.055279	2779	0.055281	3626	0	0	0
0	0	0	4711	0	0	220	0	232	0	0	0
0	0	0.06082	34786	0	0.055279	2779	0.055281	3626	0	0	0
0	0	0	4711	0	0	220	0	232	0	0	0
0	0	0	4711	0	0	220	0	232	0	0	0
0	0	0	4711	0	0	220	0	232	0	0	0
0	0	0	4711	0	0	220	0	232	0	0	0
0	0	0.034343	71193	0	0.027013	5597	0.027013	7664	0	0	0
0	0	0.044637	74139	0	0.037504	6001	0.037506	8261	0	0	0
0	0	0.034343	71193	0	0.027013	5597	0.027013	7664	0	0	0
0	0	0.044637	74139	0	0.037504	6001	0.037506	8261	0	0	0
0	0	0.034343	71193	0	0.027013	5597	0.027013	7664	0	0	0
0	0	0.044637	74139	0	0.037504	6001	0.037506	8261	0	0	0
0	0	0.034343	71193	0	0.027013	5597	0.027013	7664	0	0	0
0	0	0.044637	74139	0	0.037504	6001	0.037506	8261	0	0	0
0	0	0.034343	71193	0	0.027013	5597	0.027013	7664	0	0	0
0	0	0.044637	74139	0	0.037504	6001	0.037506	8261	0	0	0
0	0	0.034343	71193	0	0.027013	5597	0.027013	7664	0	0	0
0	0	0.044637	74139	0	0.037504	6001	0.037506	8261	0	0	0
0	0	0.034343	71193	0	0.027013	5597	0.027013	7664	0	0	0
0	0	0.044637	74139	0	0.037504	6001	0.037506	8261	0	0	0
0	0	0.034343	71193	0	0.027013	5597	0.027013	7664	0	0	0
0	0	0.044637	74139	0	0.037504	6001	0.037506	8261	0	0	0
27.3	3.5	0.034343	71193	0	0.027013	5597	0.027013	7664	0	0	0
8.9	3.5	0.044637	74139	0	0.037504	6001	0.037506	8261	0	0	0
11.6	4.1	0.044637	74139	0	0.037504	6001	0.037506	8261	0	0	0
36.7	3.4	0	50569	0	0	4154	0	5955	0	0	0
16.6	4.3	0	53064	0	0	4740	0	6614	0	0	0
11.9	3.9	0	20689	0	0	1255	0	1631	0	0	0
18.2	4	0	53064	0	0	4740	0	6614	0	0	0
20	3.4	0	53064	0	0	4740	0	6614	0	0	0
16.5	3.1	0	53064	0	0	4740	0	6614	0	0	0
11.7	3.1	0	20689	0	0	1255	0	1631	0	0	0
22.9	3.5	0	50569	0	0	4154	0	5955	0	0	0
11.6	2.4	0	20689	0	0	1255	0	1631	0	0	0
7.6	3.5	0	53064	0	0	4740	0	6614	0	0	0
0	0	0	20538	0	0	1483	0	1662	0	0	0
11.9	2.4	0	20689	0	0	1255	0	1631	0	0	0
8.7	3.5	0	53064	0	0	4740	0	6614	0	0	0
11.2	3.5	0	53064	0	0	4740	0	6614	0	0	0
29	3.7	0	50569	0	0	4154	0	5955	0	0	0
0	0	0	16372	0	0	401	0	374	0	0	0
0	0	0	20689	0	0	1255	0	1631	0	0	0
0	0	0	35941	0	0	1753	0	1830	0	0	0
0	0	0	28287	0	0	1431	0	1655	0	0	0
27.7	3.6	0	50569	0	0	4154	0	5955	0	0	0
0	0	0	9584	0	0	228	0	168	0	0	0
29.8	2.1	0	50569	0	0	4154	0	5955	0	0	0
12.2	2.1	0	53064	0	0	4740	0	6614	0	0	0
0	0	0	7831	0	0	291	0	234	0	0	0
33.5	2	0	40631	0	0	3696	0	5316	0	0	0
44.1	2	0	9436	0	0	526	0	573	0	0	0
14.1	1.9	0	42140	0	0	4246	0	5976	0	0	0
11.3	1.9	0	10725	0	0	517	0	493	0	0	0
10.2	2.8	0	9584	0	0	228	0	168	0	0	0
0	0	0	7831	0	0	291	0	234	0	0	0
0	0	0	40631	0	0	3696	0	5316	0	0	0
36.8	1.7	0	42140	0	0	4246	0	5976	0	0	0
0	0	0	9436	0	0	526	0	573	0	0	0
19.5	2.3	0	10725	0	0	517	0	493	0	0	0
10.5	1.9	0	9584	0	0	228	0	168	0	0	0
35.3	2	0	42140	0	0	4246	0	5976	0	0	0
41.7	2	0	40631	0	0	3696	0	5316	0	0	0
0	0	0	7831	0	0	291	0	234	0	0	0

8.6	0.3	0	9584	0	0	228	0	168	0	0	0
25.6	2.1	0	42140	0	0	4246	0	5976	0	0	0
0	0	0	17338	0	0	857	0	709	0	0	0
9.4	2.5	0	20240	0	0	798	0	617	0	0	0
6.4	0.2	0	14439	0	0	548	0	519	0	0	0
14.7	2.5	0	5937	0	0	197	0	145	0	0	0
0	0	0	4789	0	0	259	0	208	0	0	0
0	0	0	12529	0	0	554	0	605	0	0	0
8	2.2	0	14439	0	0	548	0	519	0	0	0
42	1.2	0	4789	0	0	259	0	208	0	0	0
30.9	1.2	0	40631	0	0	3696	0	5316	0	0	0
0	0	0	12529	0	0	554	0	605	0	0	0
17.5	1.2	0	42140	0	0	4246	0	5976	0	0	0
5.6	1.1	0	5937	0	0	197	0	145	0	0	0
7.3	1	0	14439	0	0	548	0	519	0	0	0
5	1	0	5937	0	0	197	0	145	0	0	0
11.6	1.3	0	42140	0	0	4246	0	5976	0	0	0
34.3	1.3	0	4789	0	0	259	0	208	0	0	0
0	0	0	14439	0	0	548	0	519	0	0	0
9.3	1.3	0.007573	47806	0	0.005866	4500	0.005865	5981	0	0	0
0	0	0	12529	0	0	554	0	605	0	0	0
0	0	0	14439	0	0	548	0	519	0	0	0
25.3	1.2	0	45022	0	0	4015	0	5432	0	0	0
50	6	0	6781	0	0	751	0	875	0	0	0
21.2	1.5	0	45022	0	0	4015	0	5432	0	0	0
6.9	1.5	0.007573	47806	0	0.005866	4500	0.005865	5981	0	0	0
23.8	4.4	0	45022	0	0	4015	0	5432	0	0	0
9.3	4	0.007573	47806	0	0.005866	4500	0.005865	5981	0	0	0
10.2	5	0.007573	47806	0	0.005866	4500	0.005865	5981	0	0	0
0	0	0	7653	0	0	521	0	702	0	0	0
26.8	5.6	0	6781	0	0	751	0	875	0	0	0
32.8	4.8	0	6781	0	0	751	0	875	0	0	0
18.6	4.6	0.007573	47806	0	0.005866	4500	0.005865	5981	0	0	0
31.5	4.8	0	45022	0	0	4015	0	5432	0	0	0
33.8	4.8	0	6781	0	0	751	0	875	0	0	0
16	5	0.035396	55485	0	0.025343	5058	0.025343	6728	0	0	0
14.7	4.9	0.007573	47806	0	0.005866	4500	0.005865	5981	0	0	0
29.2	4.6	0	51786	0	0	4757	0	6367	0	0	0
13.6	4.9	0.007573	47806	0	0.005866	4500	0.005865	5981	0	0	0
12.3	4.9	0.035396	55485	0	0.025343	5058	0.025343	6728	0	0	0
11.1	4.8	0.035396	55485	0	0.025343	5058	0.025343	6728	0	0	0
30.6	4.6	0	51786	0	0	4757	0	6367	0	0	0
11.5	4.8	0.035396	55485	0	0.025343	5058	0.025343	6728	0	0	0
30.1	4.6	0	51786	0	0	4757	0	6367	0	0	0
15	4.8	0.035396	55485	0	0.025343	5058	0.025343	6728	0	0	0
35.8	5.7	0.164175	13955	0	0.149136	1667	0.149112	1565	0	0	0
0	0	0.122271	13439	0	0.102311	1753	0.102265	1864	0	0	0
0	0	0.122271	13439	0	0.102311	1753	0.102265	1864	0	0	0
41.8	5.7	0.164175	13955	0	0.149136	1667	0.149112	1565	0	0	0
0	0	0.122271	13439	0	0.102311	1753	0.102265	1864	0	0	0
0	0	0.122271	13439	0	0.102311	1753	0.102265	1864	0	0	0
0	0	0.164175	13955	0	0.149136	1667	0.149112	1565	0	0	0
0	0	0.164175	13955	0	0.149136	1667	0.149112	1565	0	0	0
0	0	0.122271	13439	0	0.102311	1753	0.102265	1864	0	0	0
0	0	0.164175	13955	0	0.149136	1667	0.149112	1565	0	0	0
0	0	0	2797	0	0	536	0	553	0	0	0
0	0	0	10611	0	0	1230	0	1310	0	0	0
0	0	0	4182	0	0	172	0	168	0	0	0
0	0	0	10441	0	0	1195	0	1117	0	0	0
0	0	0	3490	0	0	479	0	470	0	0	0
0	0	0.165691	14799	0	0.155445	1404	0.155493	1465	0	0	0
0	0	0	4290	0	0	241	0	273	0	0	0
0	0	0	4290	0	0	241	0	273	0	0	0
0	0	0	4290	0	0	241	0	273	0	0	0
0	0	0.134032	14738	0	0.105764	1424	0.10581	1402	0	0	0
0	0	0.134032	14738	0	0.105764	1424	0.10581	1402	0	0	0
0	0	0.134032	14738	0	0.105764	1424	0.10581	1402	0	0	0
0	0	0.165691	14799	0	0.155445	1404	0.155493	1465	0	0	0
0	0	0.165691	14799	0	0.155445	1404	0.155493	1465	0	0	0
0	0	0.134032	14738	0	0.105764	1424	0.10581	1402	0	0	0
0	0	0.165691	14799	0	0.155445	1404	0.155493	1465	0	0	0
0	0	0.165691	14799	0	0.155445	1404	0.155493	1465	0	0	0
0	0	0.134032	14738	0	0.105764	1424	0.10581	1402	0	0	0
0	0	0.165691	14799	0	0.155445	1404	0.155493	1465	0	0	0
0	0	0.134032	14738	0	0.105764	1424	0.10581	1402	0	0	0
0	0	0.165691	14799	0	0.155445	1404	0.155493	1465	0	0	0
0	0	0	14738	0	0	1424	0	1402	0	0	0
0	0	0.134032	14738	0	0.105764	1424	0.10581	1402	0	0	0
0	0	0.134032	14738	0	0.105764	1424	0.10581	1402	0	0	0
0	0	0.134032	14738	0	0.105764	1424	0.10581	1402	0	0	0
0	0	0.134032	14738	0	0.105764	1424	0.10581	1402	0	0	0
0	0	0.134032	14738	0	0.105764	1424	0.10581	1402	0	0	0
0	0	0	14799	0	0	1404	0	1465	0	0	0
0	0	0.134032	14738	0	0.105764	1424	0.10581	1402	0	0	0
0	0	0	14799	0	0	1404	0	1465	0	0	0

	0	0	0	3071	0	0	129	0	27	0	0	0
	0	0	0	3071	0	0	129	0	27	0	0	0
	0	0	0	3071	0	0	129	0	27	0	0	0
	0	0	0	3071	0	0	129	0	27	0	0	0
	0	0	0	3071	0	0	129	0	27	0	0	0
	0	0	0	11009	0	0	683	0	168	0	0	0
	0	0	0	11009	0	0	683	0	168	0	0	0
0.04	0	0	0	11009	0	0	683	0	168	0	0	0
0.2	0	0	0	11009	0	0	683	0	168	0	0	0
	0	0	0	11009	0	0	683	0	168	0	0	0
	0	0	0	11009	0	0	683	0	168	0	0	0
0.21	0	0	0	11009	0	0	683	0	168	0	0	0
	0	0	0.04	11009	0	0.04	683	0.04	168	0	0	0
0.2	0	0	0	8786	0	0	545	0	134	0	0	0
	0	0	0	8786	0	0	545	0	134	0	0	0
	0	0	0	8786	0	0	545	0	134	0	0	0
	0	0	0	8786	0	0	545	0	134	0	0	0
0.74	0	0	0.04	11089	0	0.04	688	0.04	169	0	0	0
	0	0	0	14799	0	0	1404	0	1465	0	0	0
	0	0	0	14799	0	0	1404	0	1465	0	0	0
	0	0	0	9107	0	0	1048	0	1088	0	0	0
	0	0	0	9831	0	0	1140	0	1235	0	0	0
	0	0	0	1504	0	0	377	0	387	0	0	0
	0	0	0	1499	0	0	330	0	329	0	0	0
	0	0	0	14767	0	0	1262	0	1340	0	0	0
	0	0	0	6450	0	0	522	0	551	0	0	0
	0	0	0	6450	0	0	522	0	551	0	0	0
	0	0	0	6849	0	0	415	0	455	0	0	0
	0	0	0	6849	0	0	415	0	455	0	0	0
	0	0	0	6849	0	0	415	0	455	0	0	0
	0	0	0	2988	0	0	777	0	765	0	0	0
	0	0	0	1504	0	0	377	0	387	0	0	0
	0	0	0	2644	0	0	592	0	521	0	0	0
	0	0	0	1499	0	0	330	0	329	0	0	0
	0	0	0	6450	0	0	522	0	551	0	0	0
	0	0	0	6450	0	0	522	0	551	0	0	0
	0	0	0	9107	0	0	1048	0	1088	0	0	0
	0	0	0	2644	0	0	592	0	521	0	0	0
	0	0	0	2988	0	0	777	0	765	0	0	0
	0	0	0	8317	0	0	740	0	789	0	0	0
	0	0	0	7927	0	0	899	0	941	0	0	0
	0	0	0	8317	0	0	740	0	789	0	0	0
	0	0	0	7927	0	0	899	0	941	0	0	0
	0	0	0	8317	0	0	740	0	789	0	0	0
	0	0	0	7923	0	0	781	0	818	0	0	0
	0	0	0	26	0	0	2	0	2	0	0	0
	0	0	0	26	0	0	2	0	2	0	0	0
	0	0	0	7927	0	0	899	0	941	0	0	0
	0	0	0	16098	0	0	1563	0	1646	0	0	0
	0	0	0	8237	0	0	782	0	828	0	0	0
	0	0	0	7806	0	0	288	0	232	0	0	0
	0	0	0	7831	0	0	291	0	234	0	0	0
	0	0	0	7927	0	0	899	0	941	0	0	0
	0	0	0	8317	0	0	740	0	789	0	0	0
	0	0	0	55	0	0	0	0	0	0	0	0
	0	0	0	7	0	0	0	0	0	0	0	0
6.9	0.3	0	0	7653	0	0	521	0	702	0	0	0
6.9	0.3	0	0	7653	0	0	521	0	702	0	0	0
	0	0	0	7767	0	0	947	0	841	0	0	0
	0	0	0	7767	0	0	947	0	841	0	0	0
	0	0	0.143613	27395	0	0.125099	3421	0.123646	3429	0	0	0
	0	0	0.143613	27395	0	0.125099	3421	0.123646	3429	0	0	0
32.7	4.6	0	0	51786	0	0	4757	0	6367	0	0	0
	0	0	0.034343	71193	0	0.027013	5597	0.027013	7664	0	0	0
	0	0	0.034343	71193	0	0.027013	5597	0.027013	7664	0	0	0
	0	0	0.044637	74139	0	0.037504	6001	0.037506	8261	0	0	0
	0	0	0.044637	74139	0	0.037504	6001	0.037506	8261	0	0	0
32.6	4.5	0	0	50569	0	0	4154	0	5955	0	0	0
32.6	4.5	0	0	50569	0	0	4154	0	5955	0	0	0
14.7	4.7	0.044637	0	74139	0	0.037504	6001	0.037506	8261	0	0	0
14.7	4.7	0.044637	0	74139	0	0.037504	6001	0.037506	8261	0	0	0
42.3	4.6	0	0	20538	0	0	1483	0	1662	0	0	0
42.3	4.6	0	0	20538	0	0	1483	0	1662	0	0	0
37	2.3	0	0	2002	0	0	117	0	116	0	0	0
37	2.3	0	0	2002	0	0	117	0	116	0	0	0
	0	0	0.028819	36956	0	0.026588	2530	0.02659	4734	0	0	0
	0	0	0.028819	36956	0	0.026588	2530	0.02659	4734	0	0	0
		0	0	2860		0	152		92	0	0	300
		0	0	2942		0	156		94	0	0	300
		0	0	2860		0	152		92	0	0	300

07:42.1

01:00.9

18:00.8

geomet_wkt	actie
LINestring(187075 512925,187159 512875)	u
LINestring(187159 512875,187243 512825)	u
LINestring(187243 512825,187282 512802,187285 512800,187305 512787,187324 512771)	u
LINestring(187324 512771,187331 512766,187348 512750,187360 512738,187376 512722,187393 512701)	u
LINestring(187393 512701,187397 512696,187414 512673,187427 512654,187438 512637,187443 512629,187447 512620)	u
LINestring(187447 512620,187457 512599,187470 512570,187484 512533,187485 512530)	u
LINestring(187485 512530,187493 512500,187495 512492,187499 512481,187500 512451,187500 512435)	u
LINestring(187500 512435,187502 512337)	u
LINestring(187502 512337,187505 512239)	u
LINestring(187505 512239,187505 512218,187510 512156,187512 512141)	u
LINestring(187512 512141,187517 512113,187534 512046)	u
LINestring(187017 506502,187021 506503,187102 506524,187111 506526)	u
LINestring(187111 506526,187145 506536,187163 506542,187202 506559)	u
LINestring(187202 506559,187219 506566,187269 506593,187287 506604)	u
LINestring(187287 506604,187308 506617,187342 506642,187366 506661)	u
LINestring(187366 506661,187382 506674,187405 506695,187436 506727)	u
LINestring(187436 506727,187455 506747,187497 506796,187500 506800)	u
LINestring(187500 506800,187561 506875)	u
LINestring(187561 506875,187598 506920,187625 506948)	u
LINestring(187625 506948,187678 507003,187693 507017)	u
LINestring(187014 506502,187017 506502)	u
LINestring(188464 507498,188484 507510,188537 507543,188546 507548,188554 507553,188558 507556)	u
LINestring(188558 507556,188601 507582,188626 507599,188651 507616)	u
LINestring(188315 507421,188330 507424,188350 507432,188383 507450,188392 507455)	u
LINestring(188392 507455,188436 507480,188464 507498)	u
LINestring(188315 507421,188325 507431,188349 507448,188370 507464,188380 507473)	u
LINestring(188380 507473,188388 507479,188403 507489,188451 507517)	u
LINestring(188231 507372,188315 507421)	u
LINestring(188451 507517,188534 507566,188542 507571,188547 507574)	u
LINestring(188547 507574,188570 507587,188629 507620,188644 507628)	u
LINestring(188022 511154,188037 511140,188077 511108,188102 511089)	u
LINestring(188102 511089,188116 511079,188185 511036,188189 511034)	u
LINestring(188189 511034,188210 511023,188247 511006,188284 510995)	u
LINestring(188284 510995,188383 510965)	u
LINestring(188383 510965,188439 510948,188482 510936)	u
LINestring(190359 505246,190423 505304)	u
LINestring(190423 505304,190487 505363)	u
LINestring(190487 505363,190509 505383,190553 505424)	u
LINestring(190553 505424,190575 505445,190614 505483,190618 505487)	u
LINestring(190618 505487,190648 505514,190686 505547)	u
LINestring(191211 505658,191217 505659)	u
LINestring(191199 505657,191211 505658)	u
LINestring(191217 505659,191316 505670)	u
LINestring(191316 505670,191335 505672,191395 505680,191414 505684)	u
LINestring(191414 505684,191424 505687,191457 505697,191486 505711,191505 505721)	u
LINestring(191505 505721,191515 505727,191571 505769,191583 505782)	u
LINestring(191583 505782,191652 505853)	u
LINestring(191652 505853,191721 505924)	u
LINestring(191721 505924,191790 505995)	u
LINestring(191790 505995,191824 506030,191844 506051,191859 506067)	u
LINestring(191859 506067,191928 506138)	u
LINestring(191928 506138,191976 506189,191996 506210)	u
LINestring(191996 506210,192034 506250,192064 506283)	u
LINestring(192064 506283,192076 506296,192134 506353)	u
LINestring(192134 506353,192139 506358,192203 506424)	u
LINestring(192203 506424,192230 506452,192272 506495)	u
LINestring(192272 506495,192279 506502,192300 506526,192340 506567)	u
LINestring(192340 506567,192409 506638)	u
LINestring(192409 506638,192453 506683,192479 506709)	u
LINestring(192479 506709,192519 506750,192534 506764,192550 506778)	u
LINestring(192550 506778,192602 506824,192625 506841,192626 506841)	u
LINestring(192626 506841,192663 506863,192705 506882,192714 506885)	u
LINestring(192714 506885,192723 506888,192791 506906,192811 506909)	u
LINestring(192811 506909,192848 506916,192883 506918,192909 506917)	u
LINestring(192826 511211,192847 511218,192865 511226,192883 511235,192890 511239)	u
LINestring(192890 511239,192906 511247,192933 511261,192957 511270,192965 511272)	u
LINestring(192965 511272,192982 511276,193023 511282,193045 511289)	u
LINestring(192780 511200,192789 511201,192819 511208,192826 511211)	u
LINestring(193045 511289,193054 511291,193124 511317,193137 511322)	u
LINestring(193137 511322,193202 511348,193228 511356)	u
LINestring(193809 502136,193795 502048,193795 502037)	u
LINestring(193795 502037,193795 502017,193798 501991,193808 501938)	u
LINestring(193808 501938,193826 501839)	u
LINestring(193826 501839,193827 501834,193845 501741)	u
LINestring(193845 501741,193864 501642)	u
LINestring(193864 501642,193882 501544)	u
LINestring(193882 501544,193901 501445)	u
LINestring(193901 501445,193920 501347)	u
LINestring(193920 501347,193939 501248)	u
LINestring(193939 501248,193957 501150)	u
LINestring(193957 501150,193976 501052)	u
LINestring(193976 501052,193995 500953)	u
LINestring(193995 500953,194014 500855)	u
LINestring(194014 500855,194032 500756)	u
LINestring(194032 500756,194051 500658)	u
LINestring(194051 500658,194070 500559)	u

LINESTRING(194070 500559,194089 500461) U
LINESTRING(194089 500461,194107 500362) U
LINESTRING(194107 500362,194126 500264) U
LINESTRING(193518 504029,193538 503936) U
LINESTRING(193538 503936,193557 503844) U
LINESTRING(193557 503844,193577 503751) U
LINESTRING(193577 503751,193596 503659) U
LINESTRING(193596 503659,193616 503566) U
LINESTRING(195146 505792,195254 505775) U
LINESTRING(195254 505775,195363 505757) U
LINESTRING(195363 505757,195471 505740) U
LINESTRING(195471 505740,195562 505727) U
LINESTRING(195562 505727,195652 505714) U
LINESTRING(195652 505714,195743 505700) U
LINESTRING(195743 505700,195833 505687) U
LINESTRING(195833 505687,195924 505674) U
LINESTRING(195153 520215,195236 520158) U
LINESTRING(195236 520158,195315 520105,195320 520102) U
LINESTRING(195320 520102,195403 520046) U
LINESTRING(195403 520046,195430 520028,195486 519988) U
LINESTRING(195486 519988,195552 519941,195566 519927) U
LINESTRING(195064 520276,195153 520215) U
LINESTRING(195054 520283,195064 520276) U
LINESTRING(195791 497942,195822 497906,195827 497900,195834 497891,195861 497859) U
LINESTRING(195766 497975,195791 497942) U
LINESTRING(195924 505674,195949 505671) U
LINESTRING(195566 519927,195603 519890,195629 519859) U
LINESTRING(195629 519859,195654 519829,195690 519788) U
LINESTRING(195690 519788,195751 519717) U
LINESTRING(195751 519717,195771 519694,195812 519647) U
LINESTRING(195812 519647,195848 519607) U
LINESTRING(197451 518302,197471 518282,197477 518276,197520 518233) U
LINESTRING(197520 518233,197589 518163) U
LINESTRING(197589 518163,197659 518094) U
LINESTRING(197659 518094,197696 518056,197728 518024) U
LINESTRING(197728 518024,197797 517954) U
LINESTRING(197797 517954,197819 517932,197854 517900,197867 517886) U
LINESTRING(197867 517886,197878 517873,197904 517832,197917 517802) U
LINESTRING(197917 517802,197956 517712) U
LINESTRING(197956 517712,197995 517622) U
LINESTRING(197995 517622,198034 517532) U
LINESTRING(198034 517532,198067 517456,198073 517442) U
LINESTRING(198073 517442,198105 517366,198113 517353) U
LINESTRING(197987 513509,197995 513519,198020 513543,198030 513550,198069 513575) U
LINESTRING(198069 513575,198108 513600,198157 513632) U
LINESTRING(198157 513632,198168 513639,198199 513658,198247 513687) U
LINESTRING(198247 513687,198253 513690,198297 513714,198331 513733,198339 513738) U
LINESTRING(198339 513738,198341 513739,198354 513750,198357 513753,198371 513766,198382 513779,198391 513791,198409 513816) U
LINESTRING(198409 513816,198445 513868,198469 513903) U
LINESTRING(198469 513903,198498 513943,198526 513983,198530 513988) U
LINESTRING(198530 513988,198554 514018,198596 514071) U
LINESTRING(198113 517353,198124 517334,198145 517306,198172 517280,198174 517278) U
LINESTRING(198174 517278,198188 517269,198239 517233,198254 517224) U
LINESTRING(198254 517224,198300 517196,198310 517190,198338 517174) U
LINESTRING(198338 517174,198375 517153,198422 517126) U
LINESTRING(198422 517126,198429 517122,198483 517092,198507 517077) U
LINESTRING(198507 517077,198512 517074,198536 517062,198560 517054,198584 517050,198598 517048) U
LINESTRING(198598 517048,198612 517046,198666 517044,198695 517042) U
LINESTRING(198695 517042,198732 517040,198746 517038,198755 517036,198770 517032,198785 517027,198790 517025) U
LINESTRING(198790 517025,198813 517014,198878 516983) U
LINESTRING(198878 516983,198936 516955,198952 516947,198965 516940) U
LINESTRING(198965 516940,198987 516927,199040 516886,199044 516883) U
LINESTRING(199044 516883,199065 516870,199108 516845,199129 516836) U
LINESTRING(199129 516836,199141 516830,199191 516812,199220 516802) U
LINESTRING(199220 516802,199288 516777,199309 516765) U
LINESTRING(199309 516765,199326 516756,199365 516730,199389 516710) U
LINESTRING(199389 516710,199458 516652,199463 516647) U
LINESTRING(199463 516647,199508 516610,199538 516585) U
LINESTRING(198631 504984,198677 504965,198725 504945) U
LINESTRING(198627 504986,198631 504984) U
LINESTRING(199538 516585,199547 516578,199556 516571,199579 516551) U
LINESTRING(199579 516551,199589 516542) U
LINESTRING(199589 516542,199613 516524,199641 516507,199658 516500,199667 516496,199677 516494) U
LINESTRING(199677 516494,199689 516490,199698 516488,199706 516487,199722 516485,199732 516484,199771 516484,199777 516485) U
LINESTRING(199777 516485,199784 516486,199798 516488,199809 516491,199821 516494,199831 516497,199867 516511,199874 516514) U
LINESTRING(199874 516514,199894 516523,199941 516543,199968 516553) U
LINESTRING(199968 516553,199994 516564,200061 516591) U
LINESTRING(200061 516591,200109 516610,200155 516630) U
LINESTRING(200155 516630,200164 516633,200209 516652,200249 516668) U
LINESTRING(200249 516668,200263 516673,200319 516697,200342 516707) U
LINESTRING(200342 516707,200351 516711,200370 516720,200377 516723,200430 516748,200434 516750) U
LINESTRING(200434 516750,200476 516769,200482 516772,200488 516777,200496 516784,200504 516795,200511 516810) U
LINESTRING(200110 506392,200143 506484) U
LINESTRING(200143 506484,200152 506511,200175 506575) U
LINESTRING(200175 506575,200207 506667) U
LINESTRING(200207 506667,200208 506668,200240 506759) U
LINESTRING(200240 506759,200255 506801,200272 506850) U

LINESTRING(200272 506850,200294 506913,200306 506941) u
LINESTRING(200306 506941,200316 506967,200336 507002,200351 507027) u
LINESTRING(200351 507027,200359 507041,200395 507085,200413 507102) u
LINESTRING(200413 507102,200431 507119,200471 507151,200488 507163) u
LINESTRING(200488 507163,200527 507189,200569 507216) u
LINESTRING(200569 507216,200604 507239,200652 507268) u
LINESTRING(200652 507268,200688 507290,200735 507318) u
LINESTRING(200735 507318,200779 507345,200818 507369) u
LINESTRING(200818 507369,200901 507419) u
LINESTRING(200901 507419,200954 507452,200984 507470) u
LINESTRING(200984 507470,201044 507508,201067 507522) u
LINESTRING(200896 513187,200937 513099) u
LINESTRING(200937 513099,200979 513011) u
LINESTRING(200979 513011,200984 513000,201021 512924) u
LINESTRING(201021 512924,201064 512837) u
LINESTRING(201149 507573,201189 507598,201233 507625,201238 507629) u
LINESTRING(201238 507629,201260 507644,201291 507669,201309 507685,201319 507696) u
LINESTRING(201319 507696,201341 507719,201358 507742,201375 507765,201383 507780) u
LINESTRING(201383 507780,201394 507797,201409 507825,201419 507845,201430 507874) u
LINESTRING(201430 507874,201448 507918,201471 507971) u
LINESTRING(201471 507971,201477 507987,201509 508063,201512 508068) u
LINESTRING(201512 508068,201542 508139,201553 508165) u
LINESTRING(201064 512837,201072 512820) u
LINESTRING(201553 508165,201556 508172,201561 508183,201592 508257) u
LINESTRING(201592 508257,201593 508260,201599 508274,201631 508349) u
LINESTRING(201631 508349,201633 508355,201656 508410,201662 508426,201669 508441) u
LINESTRING(201669 508441,201672 508449,201707 508534) u
LINESTRING(201707 508534,201711 508544,201746 508626) u
LINESTRING(201746 508626,201751 508638,201784 508718) u
LINESTRING(201784 508718,201785 508719,201789 508729,201823 508810) u
LINESTRING(201823 508810,201828 508821,201862 508902) u
LINESTRING(201862 508902,201866 508912,201880 508946,201900 508994) u
LINESTRING(201900 508994,201904 509003,201922 509045,201939 509086) u
LINESTRING(201939 509086,201943 509095,201957 509129,201972 509166,201977 509178) u
LINESTRING(201977 509178,201980 509186,202015 509271) u
LINESTRING(202015 509271,202020 509282,202025 509294,202054 509363) u
LINESTRING(202054 509363,202055 509364,202059 509373,202061 509377,202089 509447,202091 509455) u
LINESTRING(202091 509455,202097 509474,202119 509551) u
LINESTRING(202119 509551,202125 509572,202135 509606,202147 509647) u
LINESTRING(202147 509647,202156 509677,202176 509747) u
LINESTRING(202176 509747,202185 509777,202205 509847) u
LINESTRING(202205 509847,202214 509878,202233 509947) u
LINESTRING(202233 509947,202242 509978,202262 510047) u
LINESTRING(202262 510047,202266 510059,202268 510071,202284 510148) u
LINESTRING(202284 510148,202285 510153,202287 510167,202301 510251) u
LINESTRING(202184 511245,202198 511211,202207 511190,202225 511148) u
LINESTRING(202225 511148,202241 511113,202265 511059,202268 511052) u
LINESTRING(202268 511052,202276 511033,202295 510990,202310 510956) u
LINESTRING(185973 513562,185987 513557,186000 513554,186008 513552) u
LINESTRING(185973 513562,185989 513562,186002 513563,186009 513567) u
LINESTRING(185890 513585,185949 513567,185973 513562) u
LINESTRING(188651 507616,188672 507631,188699 507644,188734 507657,188763 507666,188801 507674,188831 507679) u
LINESTRING(188644 507628,188652 507633,188677 507645,188707 507659,188734 507668,188773 507677,188791 507682,188829 507688) u
LINESTRING(201182 502217,201197 502225,201213 502232,201231 502243,201247 502261,201263 502292) u
LINESTRING(201263 502292,201264 502323,201264 502330) u
LINESTRING(201063 502302,201066 502348) u
LINESTRING(201066 502348,201076 502365,201086 502385,201099 502397,201117 502410,201133 502417) u
LINESTRING(201147 502215,201182 502217) u
LINESTRING(186123.93911847 513054.060699569,186130.885 513042.316,186166.710339034 512980.60623026) u
LINESTRING(186166.710339034 512980.60623026,186215.957 512895.778,186226.897637352 512876.791651721) u
LINESTRING(186226.897637352 512876.791651721,186345.57 512670.848,186470.166 512455.193,186590.311144017 512249.454126634) u
LINESTRING(186590.311144017 512249.454126634,186597 512238,186623 512190,186662 512111,186703 512023,186742 511930,186766.481806447 511863.231436963) u
LINESTRING(186766.481806447 511863.231436963,186775 511840,186792.227225593 511787.497979144) u
LINESTRING(186792.227225593 511787.497979144,186796 511776,186815.238882749 511710.883781465) u
LINESTRING(186815.238882749 511710.883781465,186822 511688,186836.770966984 511633.839787726) u
LINESTRING(186836.770966984 511633.839787726,186843 511611,186853 511568,186855.424261639 511556.065173469) u
LINESTRING(186855.424261639 511556.065173469,186866 511504,186871.742373743 511477.749148604) u
LINESTRING(186871.742373743 511477.749148604,186873 511472,186885.184415461 511398.893507231) u
LINESTRING(186885.184415461 511398.893507231,186888 511382,186897.933410695 511319.916183158) u
LINESTRING(186897.933410695 511319.916183158,186900 511307,186909.521806523 511240.76134593) u
LINESTRING(186909.521806523 511240.76134593,186920.904798469 511161.575315) u
LINESTRING(186920.904798469 511161.575315,186923 511147,186931.873439749 511082.331076005) u
LINESTRING(186931.873439749 511082.331076005,186942.748609052 511003.073706047) u
LINESTRING(186942.748609052 511003.073706047,186953.623778354 510923.816336089) u
LINESTRING(186953.623778354 510923.816336089,186965.8 510835.077,187004.557 510550.301,187018.954946042 510443.236832165) u
LINESTRING(187018.954946042 510443.236832165,187029.617332373 510363.950556444) u
LINESTRING(187029.617332373 510363.950556444,187040.279718704 510284.664280722) u
LINESTRING(187040.279718704 510284.664280722,187044 510257,187052.958963849 510205.689570683) u
LINESTRING(187052.958963849 510205.689570683,187055 510194,187065.136121482 510126.624604266) u
LINESTRING(187065.136121482 510126.624604266,187072 510081,187075 510070,187079.930292379 510048.087589427) u
LINESTRING(187079.930292379 510048.087589427,187084 510030,187100.020580847 509970.664515383) u
LINESTRING(187100.020580847 509970.664515383,187111 509930,187113 509920,187120.717827404 509893.416372274) u
LINESTRING(187120.717827404 509893.416372274,187140 509827,187143.188249737 509816.638188354) u
LINESTRING(187143.188249737 509816.638188354,187152 509788,187209.601 509634.111,187237.070350094 509568.942844217) u
LINESTRING(187237.070350094 509568.942844217,187268.004 509495.556,187297.282454828 509442.772392113) u
LINESTRING(187297.282454828 509442.772392113,187326 509391,187338.711139297 509368.552815801) u
LINESTRING(187338.711139297 509368.552815801,187364.662 509322.725,187404.298 509247.911,187448.557757456 509184.085714807) u

LINESTRING(187448.557757456 509184.085714807,187506.872 509099.993,187592.801 508972.139,187718.423 508785.226,187773.065504075 508703.37481095) U
LINESTRING(187773.065504075 508703.37481095,187840.992 508601.625,187884.392496339 508537.223915866) U
LINESTRING(187884.392496339 508537.223915866,187943.071892034 508450.150794176) U
LINESTRING(187943.071892034 508450.150794176,187973.893 508404.416,188089.055 508235.821,188159.614055449 508131.821207283) U
LINESTRING(188159.614055449 508131.821207283,188204.528837127 508065.619527646) U
LINESTRING(188204.528837127 508065.619527646,188217.603 508046.349,188251.618 507995.176) U
LINESTRING(188251.618 507995.176,188297.609230825 507924.88157434) U
LINESTRING(188305.176 507929.063,188293 507942,188251.618 507995.176) U
LINESTRING(188284.33 507932.156,188279 507944,188251.618 507995.176) U
LINESTRING(188319.848744015 507861.908542087,188308 507887,188288 507924,188284.33 507932.156) U
LINESTRING(188297.609230825 507924.88157434,188308 507909,188342.019762143 507858.341829611) U
LINESTRING(188354.053038097 507868.201381744,188351 507871,188309 507925,188305.176 507929.063) U
LINESTRING(188395.056277944 507604.27638857,188390 507614,188378 507644,188369 507676,188364 507712,188358 507745,188353 507773,188347 507798,188335 507827,188325 507851,188319.848744015 507861.908542087) U
LINESTRING(188342.019762143 507858.341829611,188386.620297632 507791.9280341) U
LINESTRING(188461.067073323 507795.700541931,188440 507806,188420 507817,188399 507830,188375 507849,188354.053038097 507868.201381744) U
LINESTRING(188386.620297632 507791.9280341,188486.971502482 507642.496994202) U
LINESTRING(188451 507517,188403 507589,188395.056277944 507604.27638857) U
LINESTRING(188599.542817005 507692.240056194,188594 507700,188579 507717,188554 507741,188525 507762,188507 507773,188485 507784,188461.067073323 507795.700541931) U
LINESTRING(188469 507491,188464 507498) U
LINESTRING(188501.70745884 507443.340559976,188469 507491) U
LINESTRING(188486.971502482 507642.496994202,188507.875 507611.37,188542.874 507559.19,188570.297 507517.818,188581.496112505 507501.199895005) U
LINESTRING(188701.650357015 507284.361087761,188684 507298,188668 507309,188654 507317,188627 507330,188593 507348,188566 507365,188547 507382,188535 507396,188504 507440,188501.70745884 507443.340559976) U
LINESTRING(188581.496112505 507501.199895005,188678 507358,188687.8612387 507343.764293301) U
LINESTRING(188644 507628,188626 507655,188614 507672,188599.542817005 507692.240056194) U
LINESTRING(188658 507606,188651 507616) U
LINESTRING(188687.8612387 507343.764293301,188713.485786238 507306.772637979) U
LINESTRING(188765.215 507217.115,188759 507225,188735 507254,188706 507281,188701.650357015 507284.361087761) U
LINESTRING(188737.424003695 507324.338276213,188736 507328,188727 507357,188725 507368,188718 507397,188715 507422,188711 507478,188710 507498,188709.119489565 507501.228538261) U
LINESTRING(188713.485786238 507306.772637979,188733.415989879 507278.001350506) U
LINESTRING(188733.415989879 507278.001350506,188778.403 507213.058) U
LINESTRING(188809.793 507179.057,188795 507207,188775 507241,188750 507292,188737.424003695 507324.338276213) U
LINESTRING(188778.403 507213.058,188765.215 507217.115) U
LINESTRING(188778.403 507213.058,188791.976 507193.371,188815.498 507159.253) U
LINESTRING(188815.498 507159.253,188813 507173,188809.793 507179.057) U
LINESTRING(188854.886709169 507102.849367362,188889 507054,188900.948496951 507037.442797082) U
LINESTRING(188900.948496951 507037.442797082,188947.763319891 506972.570828151) U
LINESTRING(188947.763319891 506972.570828151,188959 506957,189048.908133006 506842.223659992) U
LINESTRING(189048.908133006 506842.223659992,189100 506777,189174.466671684 506693.144052321) U
LINESTRING(189174.466671684 506693.144052321,189313.90780122 506536.121215148) U
LINESTRING(189313.90780122 506536.121215148,189330 506518,189519.697299854 506317.846943461) U
LINESTRING(189519.697299854 506317.846943461,189584 506250,189636 506194,189636.068161556 506193.923318249) U
LINESTRING(189636.068161556 506193.923318249,189644 506185,189659.457472836 506167.88636936) U
LINESTRING(189659.457472836 506167.88636936,189672 506154,189838.363416951 505979.234390274) U
LINESTRING(189838.363416951 505979.234390274,189969 505842,189975 505835,189992.057 505816.579) U
LINESTRING(192401.498971924 493726.564591606,192440 493750,192582 493839,192917.447921611 494042.485999357) U
LINESTRING(192592.033058506 493885.220692176,192646 493919,192801 494011,192875 494058,193118.153428426 494203.617307419) U
LINESTRING(192917.447921611 494042.485999357,192994.39698822 494089.164057886) U
LINESTRING(192994.39698822 494089.164057886,193520 494408,193550 494425,193735 494537,193756.021048041 494549.60162304) U
LINESTRING(193118.153428426 494203.617307419,193229 494270,193490 494428,193532 494453,193541.982470067 494459.330346872) U
LINESTRING(193541.982470067 494459.330346872,193573 494479,193706 494559,193788 494609,194155 494829,194305 494929,194348 494962,194396 495001,194420 495021,194513 495106,194616 495214,194689 495303,194719.849028861 495343.892898723) U
LINESTRING(193756.021048041 494549.60162304,193824.636325937 494590.734865548) U
LINESTRING(193824.636325937 494590.734865548,193893.251603833 494631.868108057) U
LINESTRING(193893.251603833 494631.868108057,193961.866881729 494673.001350565) U
LINESTRING(193961.866881729 494673.001350565,194043.34752423 494721.847076044) U
LINESTRING(194043.34752423 494721.847076044,194117 494766,194158.231663612 494792.709819824) U
LINESTRING(194158.231663612 494792.709819824,194254.749646149 494855.234047505) U
LINESTRING(194254.749646149 494855.234047505,194276 494869,194351 494924,194406 494970,194413.4086622 494976.678230716) U
LINESTRING(194413.4086622 494976.678230716,194477 495034,194550 495106,194575 495131,194655 495223,194734 495323,194757 495355,194800.009 495419.091,194847 495495,194880 495553,194913.335387696 495619.670775391) U
LINESTRING(194719.849028861 495343.892898723,194732 495360,194761 495402,194765.812001784 495409.349239089) U
LINESTRING(194765.812001784 495409.349239089,194816 495486,194849 495541,194888 495613,194933.105429695 495704.88143086) U
LINESTRING(194913.335387696 495619.670775391,194922 495637,194946.548785165 495692.432740696) U
LINESTRING(194933.105429695 495704.88143086,194942 495723,194965.132423011 495778.161931795) U
LINESTRING(194946.548785165 495692.432740696,194978.942877827 495765.580691867) U
LINESTRING(194965.132423011 495778.161931795,194968 495785,194993.056734655 495853.122997344) U
LINESTRING(194978.942877827 495765.580691867,194984 495777,195000 495822,195011.017 495848.543) U
LINESTRING(194993.056734655 495853.122997344,195000 495872,195016 495917,195019.679809162 495928.554960627) U
LINESTRING(195011.017 495848.543,195045.41 495959.312,195056.372104762 495994.851961429) U
LINESTRING(195019.679809162 495928.554960627,195053.017 496033.237) U
LINESTRING(195053.017 496033.237,195108.708 496215.5,195131.609 496287.628) U
LINESTRING(195056.372104762 495994.851961429,195138.899968643 496262.413452834) U
LINESTRING(195131.609 496287.628,195155.187662517 496363.127175901) U
LINESTRING(195138.899968643 496262.413452834,195169 496360,195197.497 496451.73) U
LINESTRING(195155.187662517 496363.127175901,195179.035996502 496439.489843259) U
LINESTRING(195179.035996502 496439.489843259,195202.884330488 496515.852510618) U
LINESTRING(195197.497 496451.73,195220.515379404 496525.825917849) U
LINESTRING(195202.884330488 496515.852510618,195226.732664474 496592.215177976) U
LINESTRING(195220.515379404 496525.825917849,195244.249035873 496602.224304944) U
LINESTRING(195226.732664474 496592.215177976,195240.147352341 496635.169178365) U
LINESTRING(195240.147352341 496635.169178365,195266.976728075 496721.077179144) U
LINESTRING(195244.249035873 496602.224304944,195253.149157049 496630.873700104) U
LINESTRING(195253.149157049 496630.873700104,195267.982692342 496678.622692038) U
LINESTRING(195266.976728075 496721.077179144,195291 496798,195292 496802,195294 496806,195294.236383647 496806.783020831) U
LINESTRING(195267.982692342 496678.622692038,195306 496801,195307 496805,195308.221076948 496807.442153896) U
LINESTRING(195294.236383647 496806.783020831,195358 497018,195427 497236,195445 497284,195465 497334,195471.169101653 497348.321128836) U
LINESTRING(195308.221076948 496807.442153896,195309 496809,195365 496995,195415 497157,195451 497261,195466 497301,195498 497375,195524.52409585 497430.01293954) U
LINESTRING(195471.169101653 497348.321128836,195493 497399,195556 497524,195569 497547,195613.357 497616.58) U
LINESTRING(195524.52409585 497430.01293954,195552 497487,195605.228 497582.491) U

LINESTRING(199074.548909355 497420.193375012,199079.899 497449.116,199089.926006079 497503.790869285) u
LINESTRING(199079.578016447 497340.575163622,199091 497387,199097.313119826 497418.565599128) u
LINESTRING(199079.569945316 498870.874403893,199090.073 498843.314,199110.731 498779.654,199121.983144596 498732.396963587) u
LINESTRING(199089.926006079 497503.790869285,199103.132 497575.8,199104.355148027 497582.478859678) u
LINESTRING(199097.313119826 497418.565599128,199110 497482,199116.156906932 497516.768415616) u
LINESTRING(199104.355148027 497582.478859678,199105 497586,199106.533 497594.686,199117.556089945 497661.381269668) u
LINESTRING(199116.156906932 497516.768415616,199127 497578,199129 497587,199130.685856744 497595.42928372) u
LINESTRING(199117.556089945 497661.381269668,199119.977 497676.029,199129.206748443 497740.525496016) u
LINESTRING(199121.983144596 498732.396963587,199124.433 498722.108,199144.458 498646.011,199160.268 498566.542,199163.183756905 498547.049576417) u
LINESTRING(199129.206748443 497740.525496016,199136.001 497788.003,199150 497895,199160 498007,199163.818011978 498058.543161703) u
LINESTRING(199130.685856744 497595.42928372,199131 497597,199144.194135955 497674.279939164) u
LINESTRING(199135.043059115 498544.770351386,199141 498513,199154 498431,199155.727281817 498411.424139409) u
LINESTRING(199144.194135955 497674.279939164,199145 497679,199163 497809,199179 497953,199181.01895225 497971.978151153) u
LINESTRING(199144.689560144 498016.367214247,199156 498088,199156.326 498094.832) u
LINESTRING(199155.727281817 498411.424139409,199160 498363,199163 498302,199165.060611561 498241.721212545) u
LINESTRING(199156.326 498094.832,199160.459 498181.379,199166.231 498207.484) u
LINESTRING(199163.183756905 498547.049576417,199178 498448,199182.546133208 498413.449387621) u
LINESTRING(199163.818011978 498058.543161703,199166 498088,199167 498185,199166.231 498207.484) u
LINESTRING(199165.060611561 498241.721212545,199166.231 498207.484) u
LINESTRING(199181.01895225 497971.978151153,199184 498000,199187 498048,199191.016 498104.229) u
LINESTRING(199182.546133208 498413.449387621,199183 498410,199192 498300,199194.078327363 498243.885161199) u
LINESTRING(199191.016 498104.229,199197 498070,199195.878 498006.056) u
LINESTRING(199194.078327363 498243.885161199,199195 498219,199194 498146,199191.016 498104.229) u
LINESTRING(199194.479863881 497926.354796397,199194 497899,199197 497840,199202 497802,199207.792966118 497767.242203291) u
LINESTRING(199195.878 498006.056,199194.479863881 497926.354796397) u
LINESTRING(199207.792966118 497767.242203291,199212 497742,199225.387086126 497689.262994051) u
LINESTRING(199225.387086126 497689.262994051,199245 497612) u
LINESTRING(199382.536116498 500960.224694094,199388 500963,199454.720221988 500994.708620351) u
LINESTRING(199418.237047025 500948.30824856,199430 500954,199504.476095846 500988.150014681) u
LINESTRING(199454.720221988 500994.708620351,199489 501011,199527.422046753 501028.076465224) u
LINESTRING(199504.476095846 500988.150014681,199577.195682335 501021.494605559) u
LINESTRING(199527.422046753 501028.076465224,199600.526970643 501060.567542508) u
LINESTRING(199577.195682335 501021.494605559,199635 501048,199649.780289801 501055.126211154) u
LINESTRING(199600.526970643 501060.567542508,199673.631894532 501093.058619792) u
LINESTRING(199649.780289801 501055.126211154,199691 501075,199721.021535771 501091.463422842) u
LINESTRING(199673.631894532 501093.058619792,199678 501095,199727 501121,199744.091470397 501130.895061809) u
LINESTRING(199721.021535771 501091.463422842,199753 501109,199789.999849647 501131.929484288) u
LINESTRING(199744.091470397 501130.895061809,199765 501143,199813.054770474 501171.440578444) u
LINESTRING(199789.999849647 501131.929484288,199824 501153,199856.549574258 501176.249695899) u
LINESTRING(199813.054770474 501171.440578444,199814 501172,199869 501207,199879.967686697 501215.225765022) u
LINESTRING(199856.549574258 501176.249695899,199887 501198,199920.972681528 501223.668248265) u
LINESTRING(199879.967686697 501215.225765022,199885 501219,199930 501250,199944.526604724 501262.347614015) u
LINESTRING(199920.972681528 501223.668248265,199932 501232,200000 501291,200026.008 501313.202) u
LINESTRING(199944.526604724 501262.347614015,199970 501284,200000 501314,200014.399 501326.149) u
LINESTRING(200288.136 501561.739,200385 501645,200415.289731029 501670.914547658) u
LINESTRING(200301.835 501549.896,200351 501592,200425.687624331 501655.795679116) u
LINESTRING(200415.289731029 501670.914547658,200475 501722,200483 501730,200496 501740,200510.191696138 501752.182870687) u
LINESTRING(200425.687624331 501655.795679116,200495 501715,200508 501726,200528.396608261 501743.407450154) u
LINESTRING(200528.396608261 501743.407450154,200555.019129804 501766.128395264) u
LINESTRING(200694.263 501910.199,200715 501928,200834.314493694 502028.02412645) u
LINESTRING(200701.042 501892.254,200723.007791467 501912.296801859) u
LINESTRING(200701.042 501892.254,200723.724 501905.488,200771.738 501943.475,200795.392 501962.116) u
LINESTRING(200723.007791467 501912.296801859,200745.168846088 501932.51777261) u
LINESTRING(200745.168846088 501932.51777261,200767.329900709 501952.73874336) u
LINESTRING(200767.329900709 501952.73874336,200772 501957,200915.72039189 502079.244931033) u
LINESTRING(200795.392 501962.116,200849.478 502003.21,200854.778376554 502007.280764753) u
LINESTRING(200834.314493694 502028.02412645,200882 502068,200973 502150,201002.561622157 502177.360179427) u
LINESTRING(200854.778376554 502007.280764753,200903.352 502044.586,200957.989146225 502086.321946203) u
LINESTRING(200915.72039189 502079.244931033,200946 502105,200961.090051615 502118.501625129) u
LINESTRING(200937.938622796 502156.827379814,201030 502245,201045 502263,201048 502265,201056 502281,201063 502302) u
LINESTRING(200957.989146225 502086.321946203,200958.073 502086.386,201010.535 502126.068,201062.768 502163.661,201084 502180,201104 502194,201117 502203,201119.522992785 502204.081282622) u
LINESTRING(201002.078323858 502155.1753424,201022 502173,201068.783 502215.606,201089.261 502234.635,201103 502247,201164 502305,201237.8 502378.8,201251 502391.5,201267.415 502407.723,201280.339593371 502421.12040481) u
LINESTRING(201002.561622157 502177.360179427,201056.242 502227.043,201076.477 502246.477,201106.84 502276.006,201212.387767021 502377.525624868) u
LINESTRING(201063 502302,201068 502288,201070 502282,201079 502263,201089 502250,201105 502234,201116 502228,201147 502215) u
LINESTRING(201119.522992785 502204.081282622,201131 502209,201135 502210,201147 502215) u
LINESTRING(201133 502417,201172 502418) u
LINESTRING(201172 502418,201207 502409,201221 502401,201239 502388,201246 502380,201248 502376,201251 502372,201256 502361,201259 502351,201264 502330) u
LINESTRING(201212.387767021 502377.525624868,201216 502381,201237.668 502401.668,201266.884 502431.762,201269.028613826 502434.001195058) u
LINESTRING(201264 502330,201275 502362,201282 502375,201295 502391,201357.060002576 502461.571088644) u
LINESTRING(201269.028613826 502434.001195058,201315 502482,201335.892 502505.657) u
LINESTRING(201280.339593371 502421.12040481,201339.171 502482.104) u
LINESTRING(201321.267974648 502537.251886179,201322 502538,201377.294222248 502594.357572675) u
LINESTRING(201335.892 502505.657,201383 502559,201399.07003807 502576.159532176) u
LINESTRING(201335.892 502505.657,201355.545 502534.722,201414.396 502605.29) u
LINESTRING(201339.171 502482.104,201398 502546,201412.08339703 502563.310842183) u
LINESTRING(201339.171 502482.104,201358.219 502497.525,201424.159 502564.607) u
LINESTRING(201357.060002576 502461.571088644,201433.002858093 502547.928964346) u
LINESTRING(201377.294222248 502594.357572675,201478 502697,201485.491 502705.169) u
LINESTRING(201399.07003807 502576.159532176,201442 502622,201482.808333701 502668.936494244) u
LINESTRING(201412.08339703 502563.310842183,201446 502605,201463.286208645 502624.763888299) u
LINESTRING(201414.396 502605.29,201430 502624,201536 502752,201547 502765,201568.18 502789.013) u
LINESTRING(201424.159 502564.607,201456 502597,201505 502652,201618.191 502779.473) u
LINESTRING(201433.002858093 502547.928964346,201470 502590,201512 502645,201513.646 502647.47) u
LINESTRING(201463.286208645 502624.763888299,201515.954162619 502684.98088444) u
LINESTRING(201482.808333701 502668.936494244,201726.339 502949.038,201744.758 502970.384,201768.688 502998.085,201845.837 503086.361,201872.7 503117.016,201922 503173,201954 503207,201957.440078064 503210.274954317) u
LINESTRING(201485.491 502705.169,201545.17 502770.249,201568.18 502789.013) u

receptor_id	toolversie	rekenjaar	nummer	naam	nsi	x	y	conc_no2	no2_ou	conc_pm10	pm10_od	conc_pm25	conc_ec	conc_com	conc_benz	srm2_nox	srm2_no2	srm2_fno	srm2_pm10	srm2_pm25	srm2_ec	srm2_compx	srm1_nox	srm1_no2du
213756	MR2014	2030		Oranjesingel 12 zijde	t	190451.1318	508398.5826	11.7545318	60.57397296	18.19399974	6.5405621	10.53417291			1.079455264	0.18335113	0.044830383	0.24450563	0.02671646	0.008435259	0		1.692075552	0.360052694
213748	MR2014	2030		Balgweg, Kampen	t	185927.2065	513560.5658	14.67943397	66.36527926	18.82759485	6.869478892	10.21517599			0.400000006	5.4924583	3.0444343	0.24955463	0.7966947	0.25387645	0		0	0
213752	MR2014	2030		Noordweg 14	t	190395.1258	508514.5942	11.74686712	60.55879689	18.19363469	6.540403813	10.53393376			1.072514041	0.1806575	0.044227833	0.24481592	0.026321407	0.008311089	0		1.68100283	0.355756963
213746	MR2014	2030		Balgweg, Kampen	t	185989.8726	513576.6567	13.23666662	63.5085999	18.443093	6.656952929	10.09028967			0.433971375	2.0882156	0.516966419	0.24756372	0.30225894	0.096391484	0		0.829772225	0.20590082
213747	MR2014	2030		Balgweg, Kampen	t	185934.7935	513585.4342	14.1780118	65.37246337	18.70892987	6.799633596	10.17731756			0.400000006	4.697082	2.5430121	0.24869771	0.6780297	0.21601802	0		0	0
213754	MR2014	2030		De hagen 12/10	t	190399.5075	508495.8792	11.32392958	59.72138056	18.06688673	6.487618583	10.49384116			0.792949357	0.18141797	0.044417181	0.24483341	0.026432404	0.008346001	0		0.686431225	0.145272027
213755	MR2014	2030		De hagen 2	t	190400.6535	508463.5401	11.18622114	59.44871785	18.02575769	6.471421498	10.48083446			0.703169657	0.18305367	0.044817998	0.24483529	0.026671197	0.008421197	0		0.362280864	0.076712836
213749	MR2014	2030		Oranjesingel nabij weg	t	190439.1158	508401.1535	11.90624516	60.87436542	18.23929605	6.560481861	10.54852719			1.180643571	0.18370159	0.04491884	0.2445207	0.026767306	0.008451402	0		2.049185553	0.436041274
213750	MR2014	2030		Oranjesingel 10	t	190422.0268	508374.2986	11.40476349	59.88143171	18.08995139	6.496901447	10.50120053			0.845957545	0.18580769	0.045437937	0.24454282	0.027074562	0.008548919	0		0.868024111	0.184704767
213745	MR2014	2030		Balgweg, Kampen	t	185986.6271	513542.3841	13.37384536	63.78021382	18.47885566	6.675037583	10.10189603			0.435115969	2.3089046	0.571801434	0.24765052	0.33522323	0.10716169	0		0.850155715	0.210932124

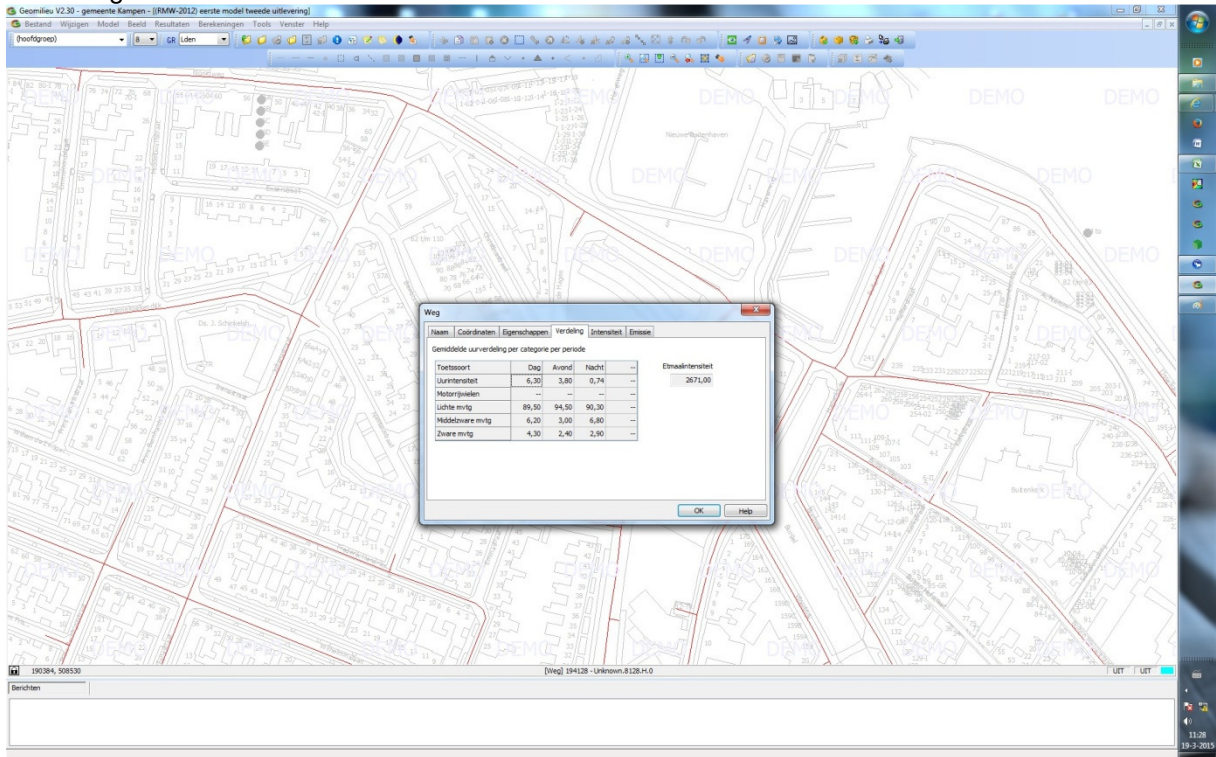
srm1_fno2	srm1_pm10	srm1_pm2	srm1_ec	srm1_c6h6	srm1_compx	wind_speed	gcn_no2	gcn_o3	gcn_pm10	gcn_pm25	gcn_ec	gcn_c6h6	bg_c_no2	bg_c_o3	bg_c_pm10	bg_c_pm25	air_no2	air_o3	c_air_no2	c_air_o3	c_hwn_no2	c_hwn_o3	c_hwn_pm10	c_hwn_pm25	c_hwn_ec	achtg_no2
0.212787599	0.214384198	0.067938		0.47945524		4.25	10.94999981	46.29000092	17.95999908	10.46000004		0.600000024					0	0	0	0	0.028000001	-0.021	0.0071	0.0022		10.92199981
		0		0		0	11.85999966	46.09000015	18.09000015	9.979999542		0.400000006					0	0	0	0	0.224999994	-0.160999998	0.059099998	0.0187		11.63499966
0.211633768	0.214414201	0.067823		0.472514017		4.25	10.94999981	46.29000092	17.95999908	10.46000004		0.600000024					0	0	0	0	0.028000001	-0.021	0.0071	0.0022		10.92199981
0.248141374	0.109933906	0.032599		0.033971369		4.320000172	11.85999966	46.09000015	18.09000015	9.979999542		0.400000006					0	0	0	0	0.224999994	-0.160999998	0.059099998	0.0187		11.63499966
		0		0		0	11.85999966	46.09000015	18.09000015	9.979999542		0.400000006					0	0	0	0	0.224999994	-0.160999998	0.059099998	0.0187		11.63499966
0.211633768	0.087555238	0.027695		0.192949333		4.25	10.94999981	46.29000092	17.95999908	10.46000004		0.600000024					0	0	0	0	0.028000001	-0.021	0.0071	0.0022		10.92199981
0.211749622	0.046187406	0.014613		0.103169633		4.25	10.94999981	46.29000092	17.95999908	10.46000004		0.600000024					0	0	0	0	0.028000001	-0.021	0.0071	0.0022		10.92199981
0.212787599	0.25962966	0.082276		0.580643547		4.25	10.94999981	46.29000092	17.95999908	10.46000004		0.600000024					0	0	0	0	0.028000001	-0.021	0.0071	0.0022		10.92199981
0.212787599	0.109977745	0.034852		0.245957521		4.25	10.94999981	46.29000092	17.95999908	10.46000004		0.600000024					0	0	0	0	0.028000001	-0.021	0.0071	0.0022		10.92199981
0.248109988	0.112732274	0.033435		0.035115963		4.320000172	11.85999966	46.09000015	18.09000015	9.979999542		0.400000006					0	0	0	0	0.224999994	-0.160999998	0.059099998	0.0187		11.63499966

achtg_o3	achtg_pm10	achtg_pm25	achtg_ec	achtg_c6h6	aacht_no2	aacht_o3	aacht_pm10	aacht_pm25	geomet_wkt	error	calc_id
46.31100092	17.95289908	10.45780004		0.600000024	10.94999981	46.29000092	17.95999908	10.46000004	POINT(190451.131795851 508398.582556525)	0	4E3556B5-31A4-4165-B06B9E645A9E9BDC
46.25100015	18.03090015	9.961299542		0.400000006	11.85999966	46.09000015	18.09000015	9.979999542	POINT(185927.20651364 513560.565794708)	0	4E3556B5-31A4-4165-B06B9E645A9E9BDC
46.31100092	17.95289908	10.45780004		0.600000024	10.94999981	46.29000092	17.95999908	10.46000004	POINT(190395.125786985 508514.594236471)	0	4E3556B5-31A4-4165-B06B9E645A9E9BDC
46.25100015	18.03090015	9.961299542		0.400000006	11.85999966	46.09000015	18.09000015	9.979999542	POINT(185989.872561481 513576.656700747)	0	4E3556B5-31A4-4165-B06B9E645A9E9BDC
46.25100015	18.03090015	9.961299542		0.400000006	11.85999966	46.09000015	18.09000015	9.979999542	POINT(185934.79348636 513585.434205292)	0	4E3556B5-31A4-4165-B06B9E645A9E9BDC
46.31100092	17.95289908	10.45780004		0.600000024	10.94999981	46.29000092	17.95999908	10.46000004	POINT(190399.507455068 508495.879211059)	0	4E3556B5-31A4-4165-B06B9E645A9E9BDC
46.31100092	17.95289908	10.45780004		0.600000024	10.94999981	46.29000092	17.95999908	10.46000004	POINT(190400.653498079 508463.540085983)	0	4E3556B5-31A4-4165-B06B9E645A9E9BDC
46.31100092	17.95289908	10.45780004		0.600000024	10.94999981	46.29000092	17.95999908	10.46000004	POINT(190439.115754315 508401.153484768)	0	4E3556B5-31A4-4165-B06B9E645A9E9BDC
46.31100092	17.95289908	10.45780004		0.600000024	10.94999981	46.29000092	17.95999908	10.46000004	POINT(190422.026841067 508374.298603094)	0	4E3556B5-31A4-4165-B06B9E645A9E9BDC
46.25100015	18.03090015	9.961299542		0.400000006	11.85999966	46.09000015	18.09000015	9.979999542	POINT(185986.6271074 513542.384132065)	0	4E3556B5-31A4-4165-B06B9E645A9E9BDC

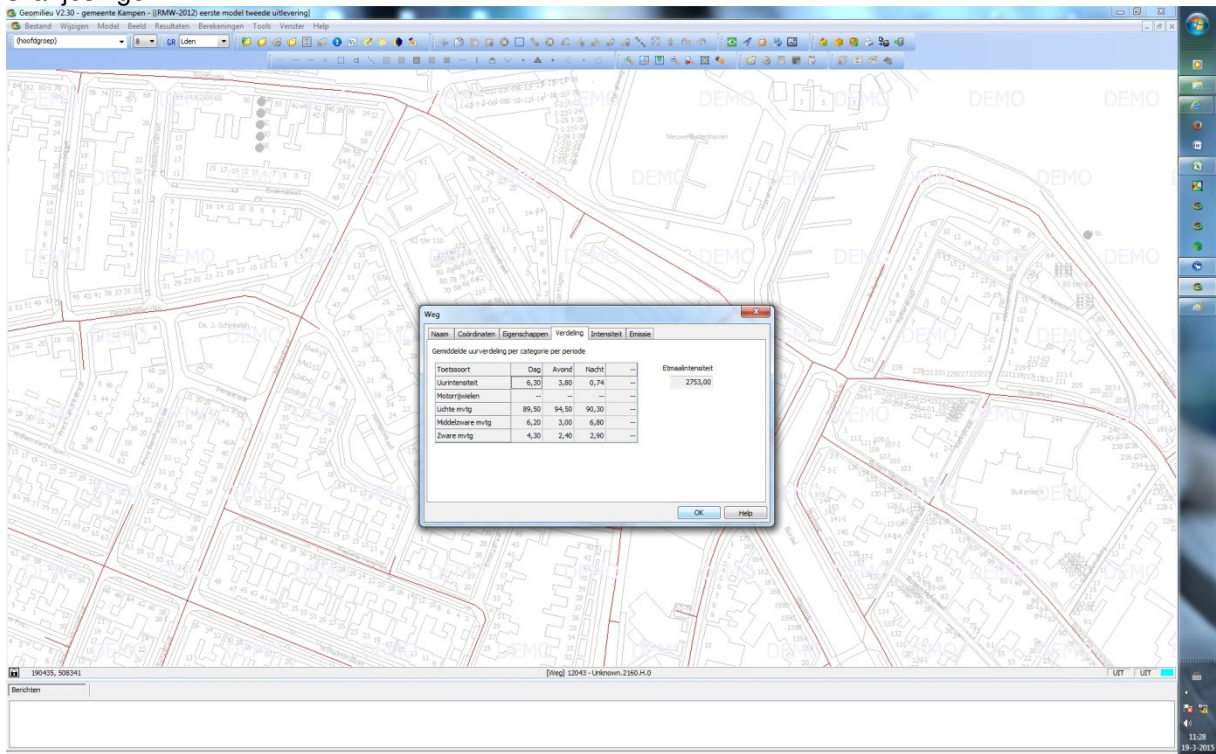
Uitgangsdocumenten

Verkeersmodel 2030

Noordweg



Oranjesingel



Gegevens team O&I

inrit en uitrit voor begane grond aan de Noordweg (134 plaatsen)
in en uitrit voor de 1e laag aan de Oranjesingel (99 parkeerplaatsen).

Totale extra toename verkeersintensiteit 189 verkeersbewegingen per etmaal t.o.v. huidige situatie.
De onderlinge verdeling 100 verkeersbewegingen extra Noordweg en 89 verkeersbewegingen Oranjesingel. Voor de worst case berekening is uit gegaan van 189 voertuigen op beide in/uit rit.

Totaal aantallen bewegingen van de in en uitrit 300 verkeersbewegingen per etmaal.

Éénrichtingsweg de Hagen op Noordweg

Dit zal een maximale toename opleveren van 200 verkeersbewegingen per etmaal.