

Dit document bevat rekenresultaten van AERIUS Calculator. Het betreft de hoogst berekende stikstofbijdragen per stikstofgevoelig Natura 2000-gebied, op basis van rekenpunten die overlappen met habitattypen en/of leefgebieden die aangewezen zijn in het kader van de Wet natuurbescherming, gekoppeld aan een aangewezen soort, of nog onbekend maar mogelijk wel relevant.

De berekening op basis van stikstofemissies gaat uit van de componenten ammoniak (NH₃) en/of stikstofoxide (NO_x).

Wilt u verder rekenen of gegevens wijzigen? Importeer de pdf dan in Calculator. Voor meer toelichting verwijzen wij u naar de website www.aerius.nl.

Calculation bouwfase Zonnepark Kerkweg

- ▶ Characterization
- ▶ Emission recap
- ▶ Deposition results
- ▶ Emission details

Further explanation of this PDF can be found in a corresponding reading guide. This reading guide and other documentation can be accessed via:
<https://www.aerius.nl/handleidingen-en-leeswijzers>.

AERIUS CALCULATOR

Contact

Legal entity	Facility Location
Kronos	Kerkweg 4, 7933 TP Pesse

Activity

Description	AERIUS reference
Zonnepark Kerkweg	ReRmHGiwk3Te

Calculation date	Calculation year	Calculation options
12 May 2020, 16:56	2020	Calculated for nature areas

Total emission

Situation 1	
NOx	11.56 kg/y
NH ₃	< 1 kg/y

Results

Hectare with highest contribution (mol/ha/y)

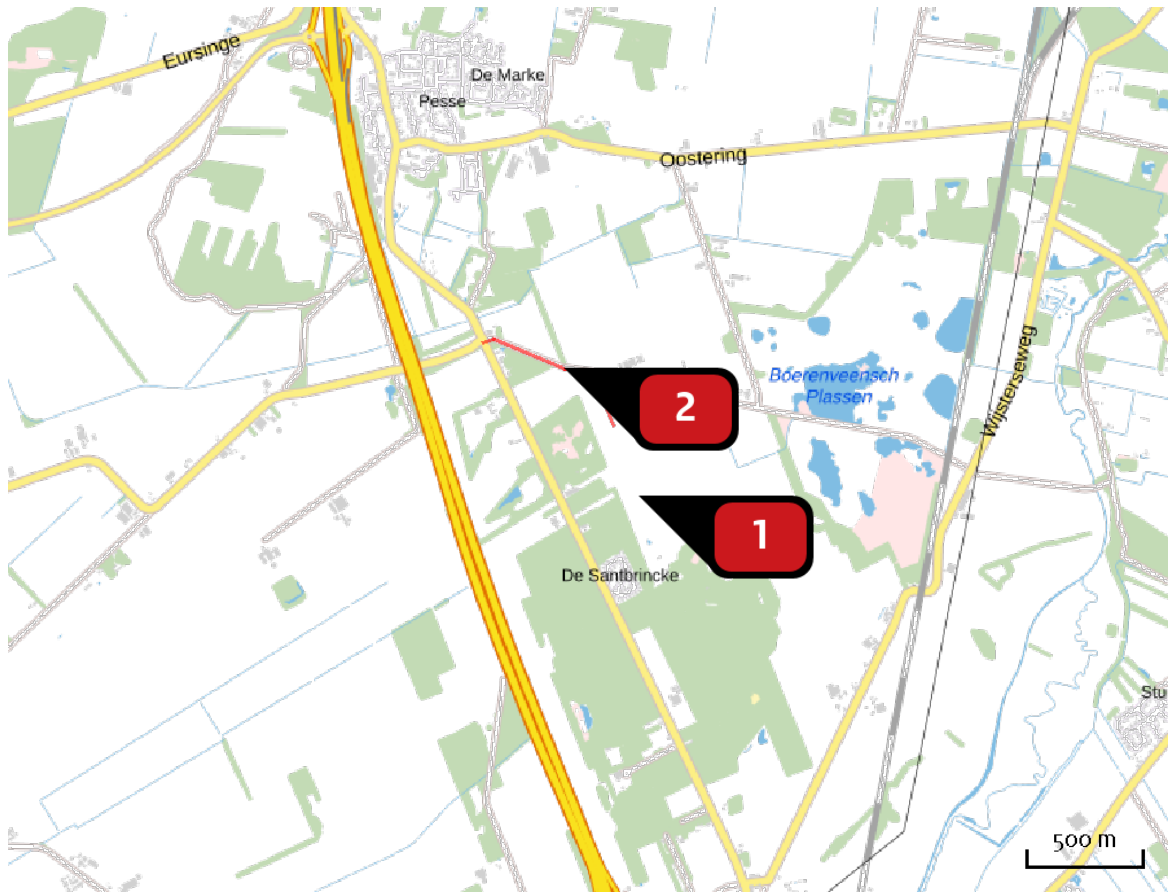
Nature area
Uw berekening heeft geen depositieresultaten opgeleverd boven 0,00 mol/ha/jr.

Clarification

Aanlegfase



Location

bouwfase
Zonnepark
Kerkweg

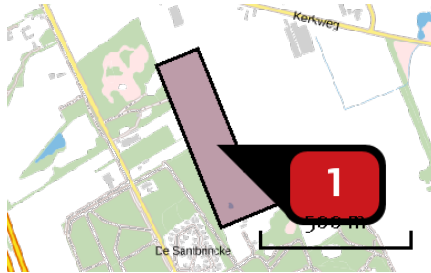


Emission

bouwfase
Zonnepark
Kerkweg

Source Sector		Emission NH ₃	Emission NO _x
1	 dieselmaterieel bouwfase Mobile equipment Construction and Industry	-	11.02 kg/y
2	 Transport Road transportation Urban roads	< 1 kg/y	< 1 kg/y

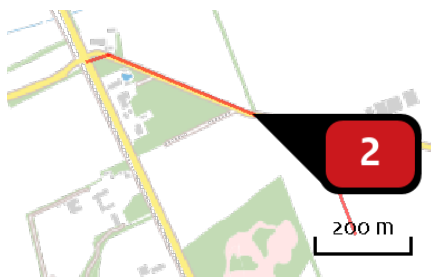
Emission
(by source)
bouwfase
Zonnepark
Kerkweg



Name
Location (X,Y)
NOx

dieselmaterieel bouwfase
227857, 530485
11.02 kg/y

Vehicle	Description	Fuel (l/y)	Emission height (m)	Spread (m)	Heat content (MW)	Substance	Emission
CST	Laadschoppen		4.0	4.0	0.1	NOx	2.05 kg/y
CST	Graafmachine		4.0	4.0	0.1	NOx	2.14 kg/y
CST	Hijskraan		4.0	4.0	0.1	NOx	< 1 kg/y
CST	Verreiker		4.0	4.0	0.1	NOx	2.06 kg/y
CST	Ramming machine		4.0	4.0	0.1	NOx	< 1 kg/y
STAGE IV, 56 – 75 kW, bouwjaar 2014/01, Cat. R	generator	3,284				NOx	3.82 kg/y



Name
Location (X,Y)
NOx
NH3

Transport
227532, 531036
< 1 kg/y
< 1 kg/y

Type	Vehicle	Number of vehicles	Substance	Emission
Standard	Light Traffic	250.0 / year	NOx NH3	< 1 kg/y < 1 kg/y
Standard	Heavy Freight	157.0 / year	NOx NH3	< 1 kg/y < 1 kg/y

Disclaimer

Although the calculation is made with the utmost care, no responsibility will be taken with respect to the decisions taken based on the results of the calculation. The information provided can be used to substantiate a permit request. AERIUS accepts no responsibility for the content of information provided by third parties. The above data and corresponding results are valid till a new version of AERIUS is available. AERIUS is a registered trademark in Europe. All rights not expressly granted herein are reserved.

References for calculations

This calculation is based on:

AERIUS [version 2019A_20200403_6c571f9654](#)

Database [version 2019A_20200403_6c571f9654](#)

For more information about the methodology and data see:

<https://www.aerius.nl/nl/factsheets/release/aerius-calculator-2019A>