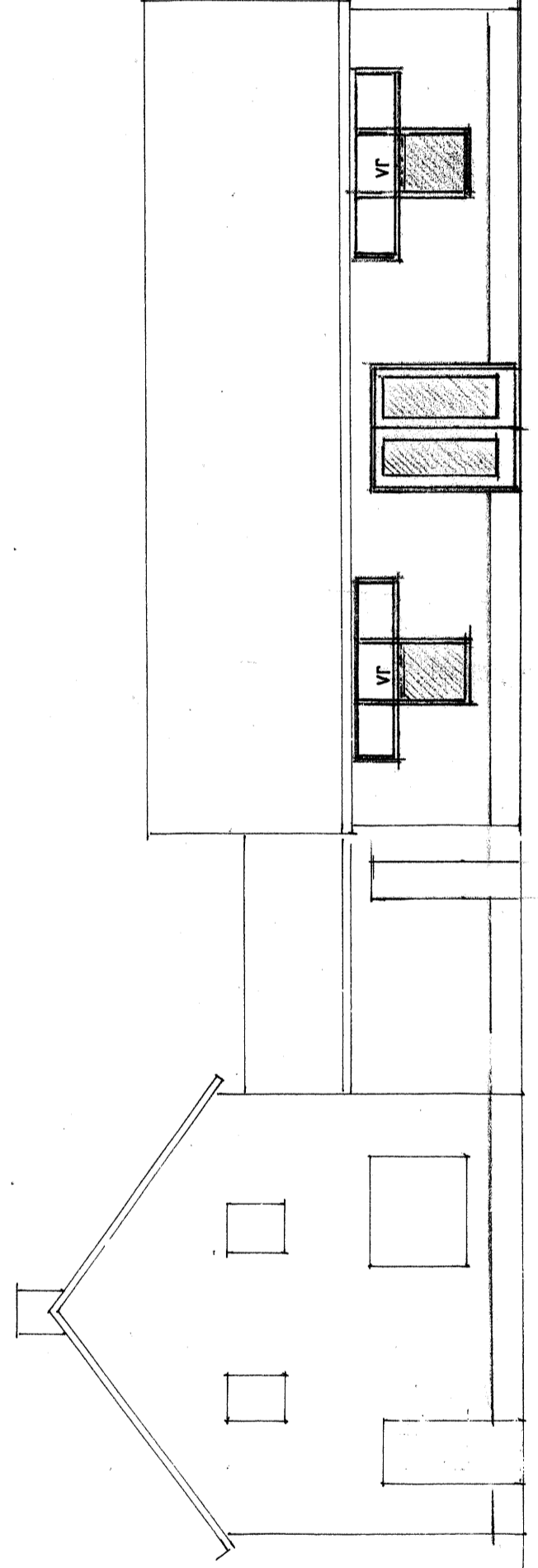
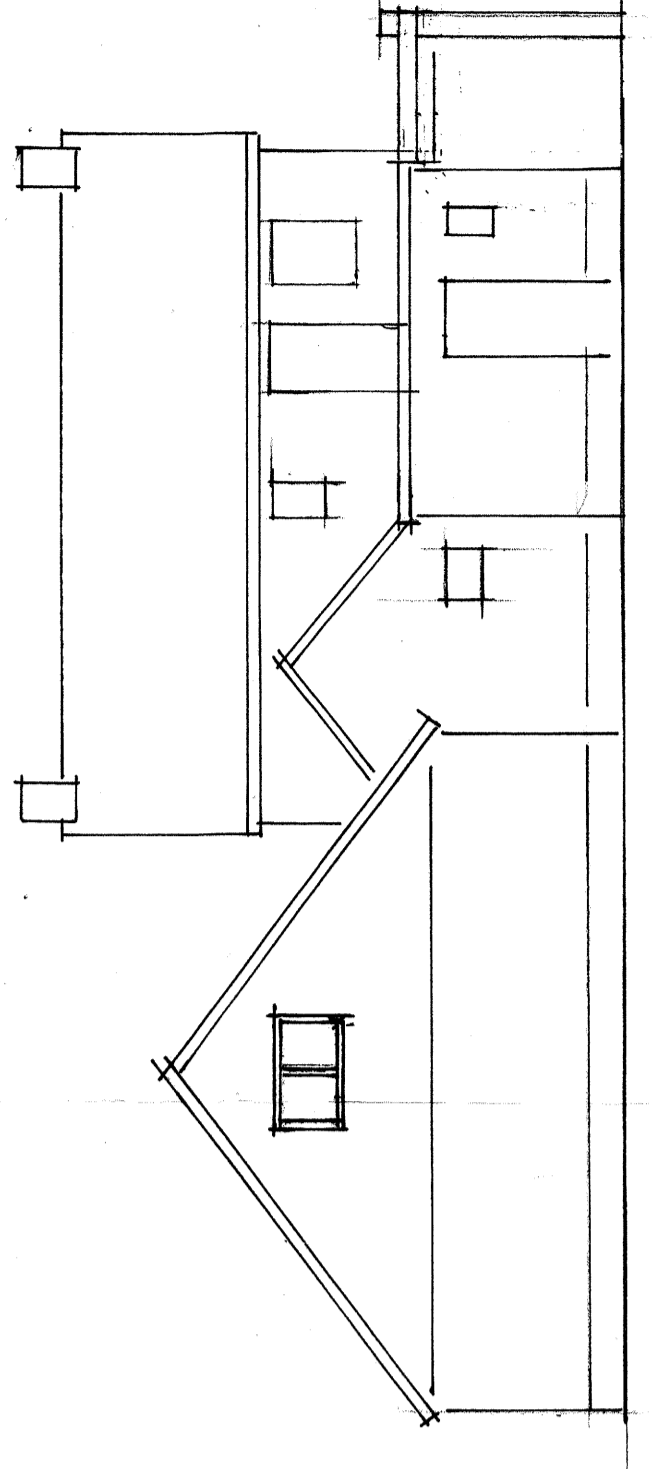


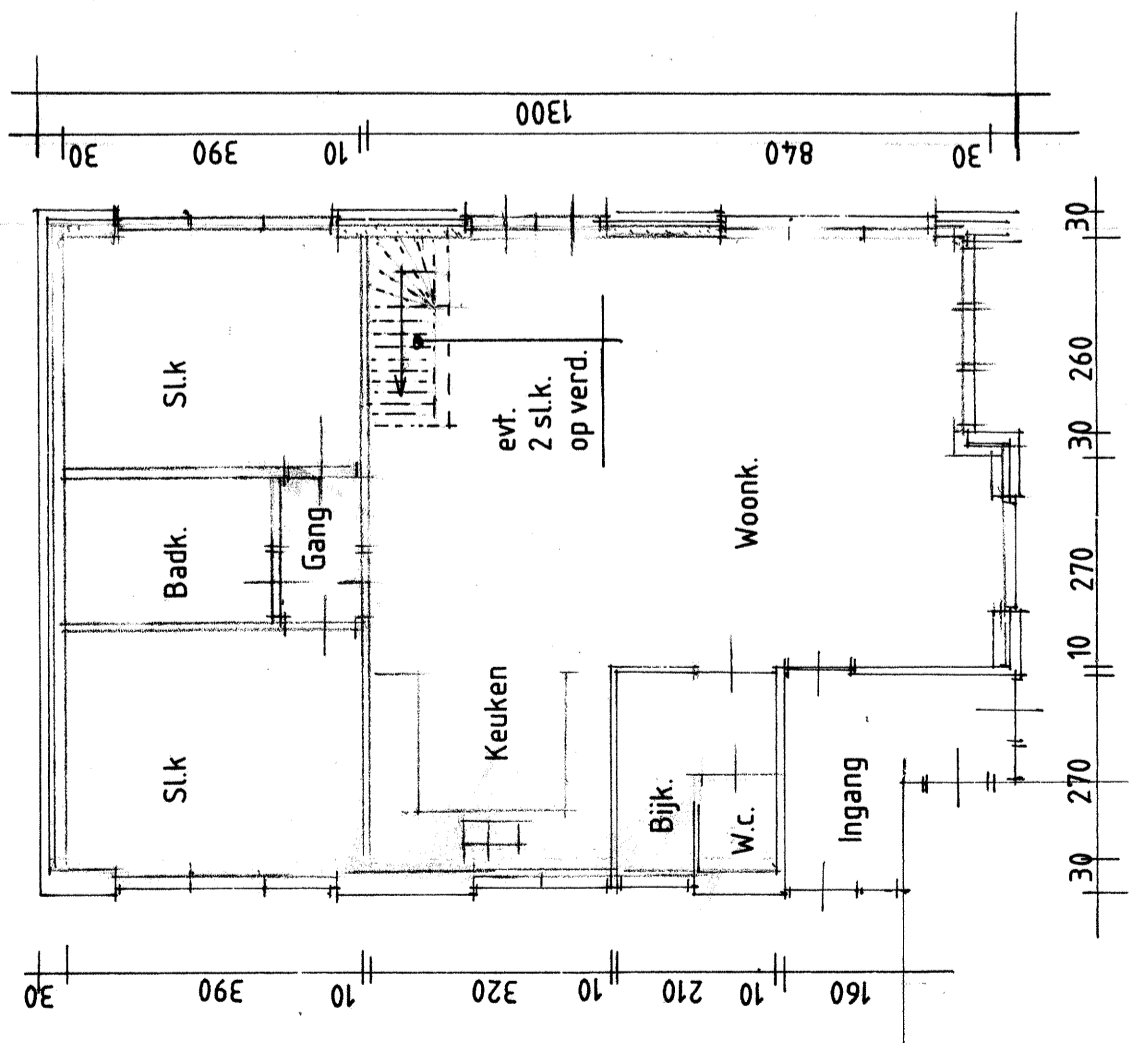
Gew. Z.O. Gevel



Gew. N.O. Gevel

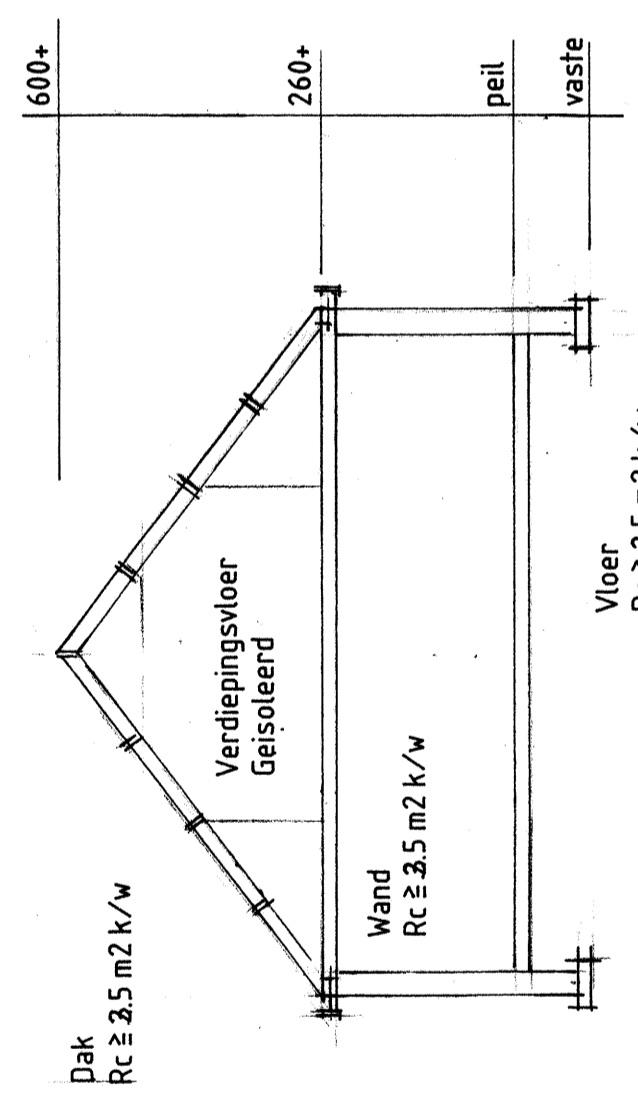


Gew. N.W. Gevel

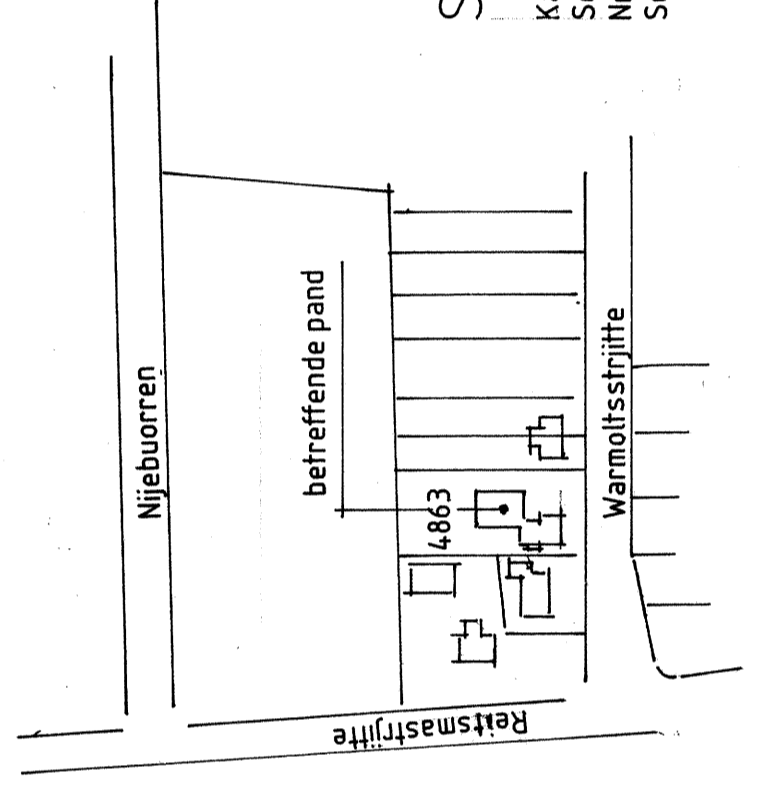


bestaand woonhuis

Gew. Begane grond



Doorsnede



Situatie

Kad. gem. Surhuizum  
Sectie C  
Nr. 4863  
Schaal 1:2000

Splitting woning, Warmoltsstrjitte 3 Harkema.

G. van der Bosch, Krûswei 5 Harkema.

schaal 1-100

datum 8 juni 2012