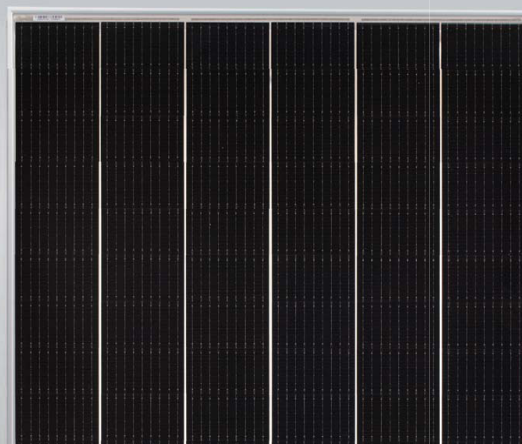


# TR Mono-facial 72M 510-530 Watt

Tiling Ribbon (TR) Technology

Positive power tolerance of 0~+3%

**DRAFT**



## KEY FEATURES



### TR technology + Half Cell

TR technology with Half cell aims to eliminate the cell gap to increase module efficiency (mono-facial up to 20.70%)



### MBB instead of 5BB

MBB technology decreases the distance between bus bars and finger grid line which is benefit to power increase.



### Higher lifetime Power Yield

2.0% first year degradation,  
0.55% linear degradation



### Best Warranty

12 year product warranty,  
25 year linear power warranty



### Avoid debris, cracks and broken gate risk effectively

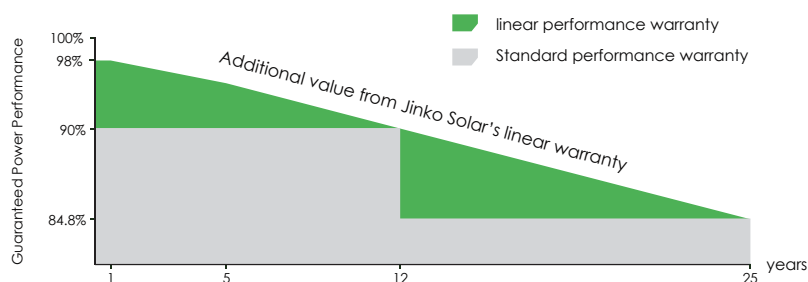
MBB technology using circular ribbon that could avoid debris, cracks and broken gate risk effectively



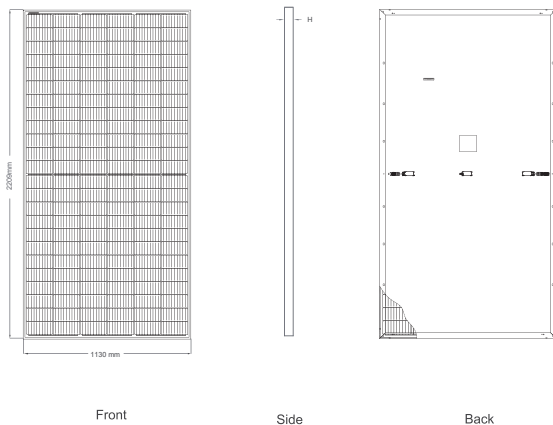
- ISO9001:2015, ISO14001:2015, ISO45001:2018 certified factory
- IEC61215, IEC61730 certified product

## LINEAR PERFORMANCE WARRANTY

12 Year Product Warranty    25 Year Linear Power Warranty  
0.55% Annual Degradation Over 25 years



## Engineering Drawings



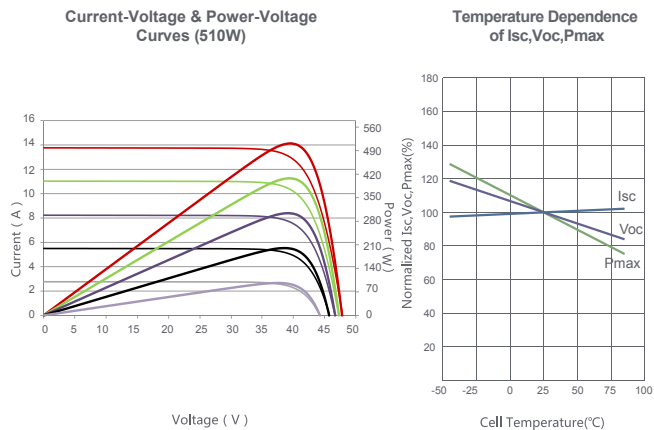
Length:  $\pm 2\text{mm}$   
Width:  $\pm 2\text{mm}$   
Height:  $\pm 1\text{mm}$   
Row Pitch:  $\pm 2\text{mm}$

## Packaging Configuration

(Two pallets = One stack)

31pcs/pallets, 62pcs/stack, 620pcs/ 40'HQ Container

## Electrical Performance & Temperature Dependence



## Mechanical Characteristics

Cell Type	P type Mono-crystalline
No. of cells	144 (2×72)
Dimensions	2209×1130×35mm (86.97×44.49×1.38 inch)
Weight	27.9 kg (54.23 lbs)
Front Glass	3.2mm, Anti-Reflection Coating, High Transmission, Low Iron, Tempered Glass
Frame	Anodized Aluminium Alloy
Junction Box	IP67 Rated
Output Cables	TUV 1×4.0mm <sup>2</sup> (+): 250mm, (-): 150mm or Customized Length

## SPECIFICATIONS

Module Type	JKM510M-7TL4-V		JKM515M-7TL4-V		JKM520M-7TL4-V		JKM525M-7TL4-V		JKM530M-7TL4-V	
	STC	NOCT	STC	NOCT	STC	NOCT	STC	NOCT	STC	NOCT
Maximum Power (Pmax)	510Wp	379Wp	515Wp	383Wp	520Wp	387Wp	525Wp	391Wp	530Wp	394Wp
Maximum Power Voltage (Vmp)	39.72V	36.48V	39.83V	36.60V	39.94V	36.71V	40.05V	36.81V	40.16V	36.92V
Maximum Power Current (Imp)	12.84A	10.40A	12.93A	10.47A	13.02A	10.54A	13.11A	10.61A	13.20A	10.68A
Open-circuit Voltage (Voc)	48.65V	45.92V	48.76V	46.02V	48.87V	46.13V	48.98V	46.23V	49.09V	46.33V
Short-circuit Current (Isc)	13.74A	11.10A	13.83A	11.17A	13.92A	11.24A	14.01A	11.32A	14.10A	11.39A
Module Efficiency STC (%)	20.43%		20.63%		20.83%		21.03%		21.23%	
Operating Temperature(°C)					-40°C~+85°C					
Maximum system voltage					1500VDC (IEC)					
Maximum series fuse rating					20A					
Power tolerance					0~+3%					
Temperature coefficients of Pmax					-0.35%/°C					
Temperature coefficients of Voc					-0.28%/°C					
Temperature coefficients of Isc					0.048%/°C					
Nominal operating cell temperature (NOCT)					45±2°C					

\* STC: Irradiance 1000W/m<sup>2</sup> Cell Temperature 25°C

AM=1.5

NOCT: Irradiance 800W/m<sup>2</sup> Ambient Temperature 20°C

AM=1.5

Wind Speed 1m/s

\* Power measurement tolerance:  $\pm 3\%$